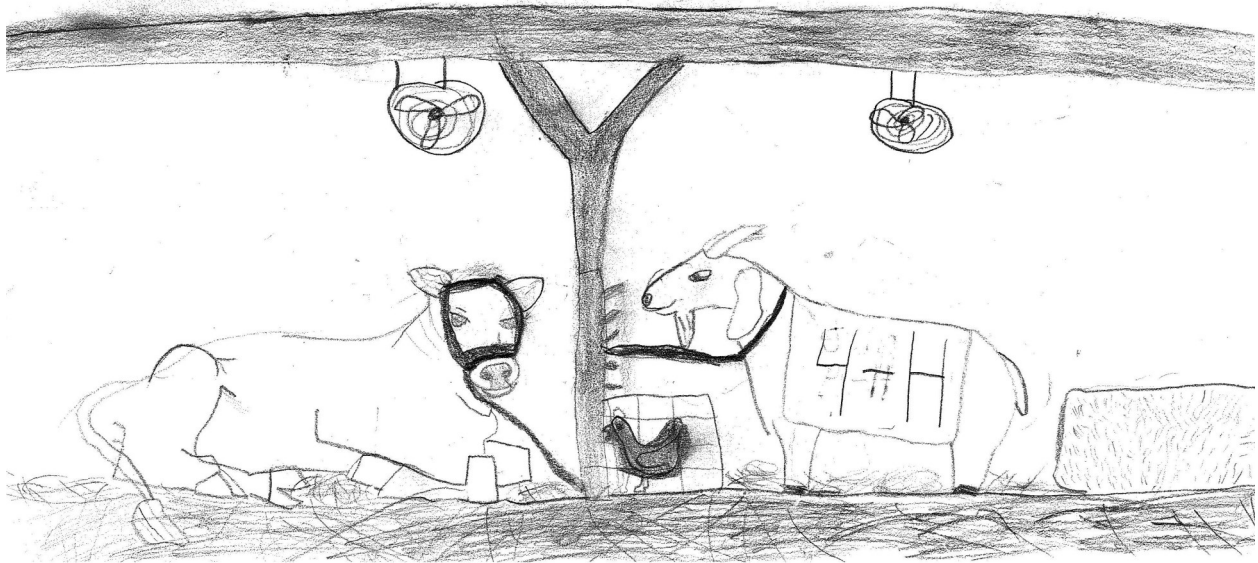


2024  
EDWARDS COUNTY  
4-H FAIR  
4-H Project and Activity Handbook



Cover created by Sarah Spray—Ellery Panthers 4-H Club

**Illinois Extension**

# 2024 Edwards County 4-H Project and Activity Handbook

Extension Office and Staff Information	
Edwards County Map	
4-H Clubs and Leaders	
Code of Conduct	
Risk Management Plan	
Fair Schedule	
Fair Calendar	
Project Registration Update for 2024	
4-H Committees . . . . .	P. 1
Edwards County 4-H General Rules . . . . .	P. 3
Clothing Show . . . . .	P. 7
Food Show . . . . .	P. 14
General Show . . . . .	P. 19
Edwards County Fair General Rules . . . . .	P. 58
Illinois Livestock Health Requirements . . . . .	P. 60
Equine Show . . . . .	P. 64
Rabbit Show . . . . .	P. 65
Sheep Show . . . . .	P. 66
Small Animal Show . . . . .	P. 65
Swine Show . . . . .	P. 67
Goat Show . . . . .	P. 68
Poultry Show . . . . .	P. 69
Bucket Calf Show . . . . .	P. 70
Dog Show . . . . .	P. 70
Beef Show . . . . .	P. 71
Master Showmanship. . . . .	P. 72
Youth Auction Information. . . . .	P. 73

**Edwards County Extension Office  
7 North Fifth Street  
Albion, Illinois 62806**

**Phone: 618-445-2934**

**Fax: 618-445-3746**

**<http://extension.illinois.edu/elrww/>**

**Tara Buerster**

**County Director  
Edwards/Lawrence/Richland/  
Wabash/Wayne**

**Samantha Gaither**

**Youth Development Educator  
Edwards/Lawrence/Richland/  
Wabash/Wayne**

**Debra Collier**

**4-H Program Coordinator**

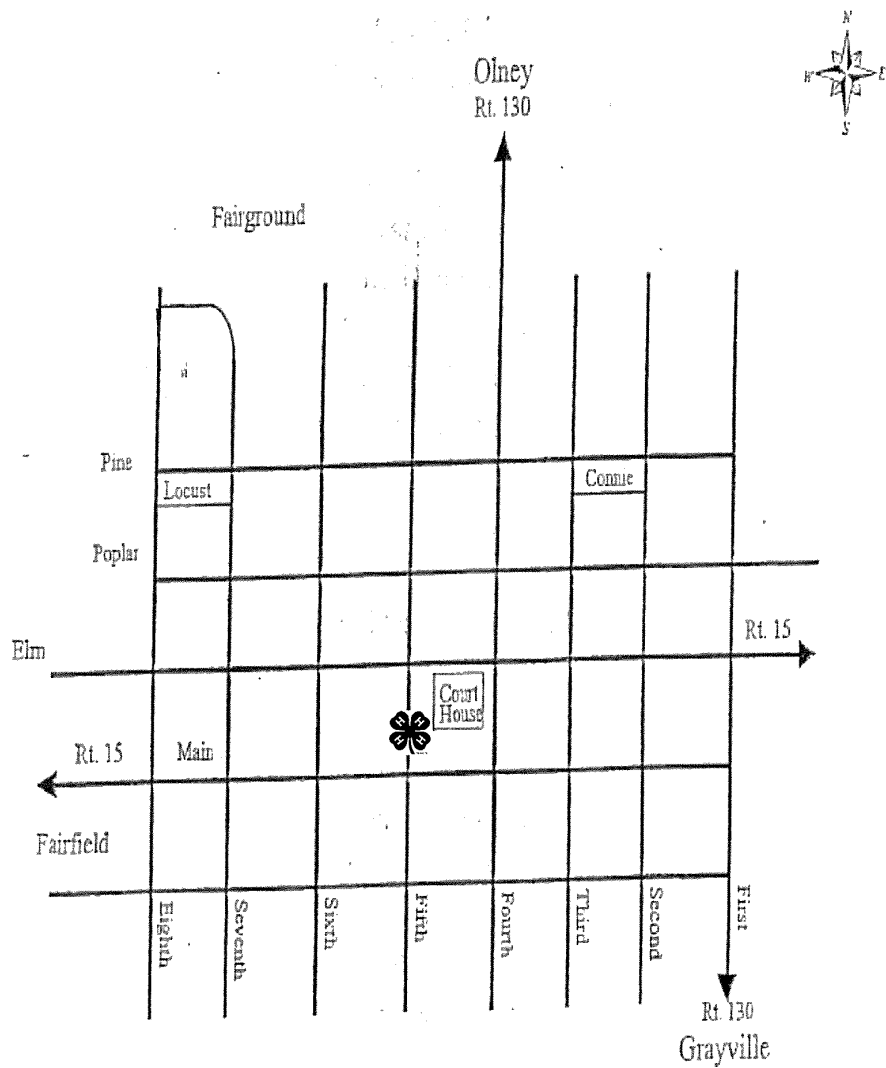
**Dana Hart**

**Office Support Assistant**

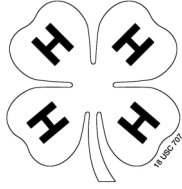
**Theresa Reid**

**Office Support Associate  
(Fiscal)**

Edwards County Extension Office  
7 N 5th Street, Albion, IL 62806  
618.445.2934



Go north on 5th Street and Extension office will be on west side of street. Public parking is available.



**2023-2024**



## **EDWARDS COUNTY 4-H CLUBS AND LEADERS**

### **BLUE RIBBON**

Neil & Debbie Fearn  
Drake & Haley Kelsey

### **BONE GAP CARDINALS**

Norma Hamilton  
Jessica Bare  
Grace Thomason

### **ELLERY PANTHERS**

Don & Kathy St Ledger  
Greg & Abby Shelton

### **LITTLE WABASH RAMBLERS**

Jordan Duncan

### **YANKEES**

Derra Williams  
Jordan McWhirter

### **SR. FEDERATION**

Debbie Fearn  
Jeremy Wyatt

# Illinois 4-H Participant & Family Code of Conduct

The opportunity to participate in or attend 4-H activities is a privilege and not a right. All 4-H participants – youth and families who participate in or attend any activity or event sponsored by the University of Illinois 4-H Youth Development program are expected to uphold the values of the Illinois 4-H program and conduct themselves according to the following standards. These standards also apply to online 4-H activity, including social media and internet presence.

As a 4-H Youth Development program participant and family, I agree I will:

1. Represent University of Illinois 4-H program with dignity and pride and be a positive role model.
2. Conduct myself in a manner that reflects honesty, integrity, self-control, and self-direction. Accept the results and outcomes of Extension contests with grace and empathy for other participants. Accept the final opinions of judges and evaluators. Be open to innovative ideas, suggestions, and opinions of others.
3. Create a Welcoming Environment for All. Encourage everyone to fully participate in 4-H program. Recognize that all people have skills and talents that can help others and improve the community. Though we will not always agree, we must disagree respectfully. When we disagree, try to understand why. Our first priority is to create a safe, inclusive space for learning, sharing and collaboration that is welcoming to people from diverse backgrounds, cultures, and perspectives. Diversity includes, but is not limited to: race, color, religion, political beliefs, national or ethnic origin, immigration or citizenship status, sex, gender identity and expression, transgender status, sexual orientation, age, marital or family status, educational level, learning style, pregnancy, physical appearance, body size, and individuals with disabilities.
4. Comply with University of Illinois equal opportunity and antidiscrimination policies, as well as all federal, state, and local laws.
5. Honor Diversity - Respect the privacy of persons involved with Extension programs and hold in confidence sensitive, private, and personal information.
6. Create a Safe Environment. Not carelessly or intentionally harm or intimidate anyone in any way (verbally, mentally, physically, or emotionally). Not engage in romantic displays or sexual activities in either public or private situations at any Extension sponsored activity or event. Be kind and compassionate toward others. Not insult, harass, or bully others or engage in other hostile behaviors. Be considerate and courteous of all persons and their property.
7. Be a Team Player. Work cooperatively with all individuals involved in Extension programs and activities. Be responsive to the reasonable requests of the person in charge. Respect the integrity of the group and the group's decisions.
8. Be a Positive Role Model. Act in a mature, responsible manner, recognizing I am a role model for others and that I am representing both myself and the University of Illinois 4-H programs. Be responsible for my behavior, use positive and affirming language, and uphold exemplary standards of conduct at all 4-H activities.
9. Participate Fully. Participate in and contribute to planned programs, be on time and follow through on assigned tasks/responsibilities in a manner that fosters the safety, well-being, and quality of the educational experience for myself and others. Have fun!
10. Obey the Law. Obey the laws of the locality, state and nation, University of Illinois and University of Illinois Extension policies and guidelines. Commit no illegal acts.

11. Will not possess, offer to others, or use alcohol, illegal drugs, marijuana, or tobacco products, which include e-pens, e-pipes, e-hookah, e-cigars, JUULs, vapes, vape pens or other electronic nicotine delivery systems at 4-H activities or events. Will not attend Extension activities under the influence of alcohol, illegal substances, or marijuana.
12. Will not possess or use weapons or firearms except as expressly permitted as part of supervised 4-H shooting sports programming
13. Not retaliate against individuals, including minors, families, parents, guardians, University of Illinois Extension staff members or other volunteers, who report allegations of inappropriate conduct (including but not limited to abuse; neglect; assault; harassment; sexual assault, abuse, or harassment; possessing child pornography or providing it to a minor; furnishing alcohol, drugs, or sexual materials to a minor; and violations of the University of Illinois antidiscrimination policy).
14. Uphold and support the responsible use of social media. In so doing, I will not create or post social media content about Illinois Extension that is abusive, threatening, defamatory, obscene, harassing, or creates a hostile environment.
15. Recognize University of Illinois Extension has the responsibility and authority to remove individuals who are disruptive to the University of Illinois Extension programs, violate the University of Illinois 4- H Code of Conduct, state, or local laws, or for any other reason the University of Illinois Extension deems appropriate.
16. Humane Treatment of Animals. Treat animals humanely and teach 4-H youth to provide appropriate animal care.
17. Watch What You Wear. Use good judgment. Wear clothing suited for the activity in which you will participate. Dress in a manner that is respectful to yourself and others. Clothing that displays or promotes violence, obscenity, illegal activities, discrimination, or intimidation is prohibited. Do not wear revealing clothing, such as short skirts or shorts, midriff-baring tops, or anything showing undergarments.

**It is expected that all University of Illinois Extension participants and families comply with the University of Illinois 4-H Code of Conduct. Failure to comply with any component of the Code or participation in other inappropriate conduct as determined by University of Illinois Extension representatives may lead to removal from the University of Illinois 4-H program.**

**I have read and I understand this Code of Conduct. I further agree to abide by the conditions of this document. I understand that my failure to comply with these expectations may result in consequences outline below.**

### **CONSEQUENCES**

Any of the following may be used, depending on severity of the situation:

1. Participant will receive a verbal warning.
2. Participant may remain at the event/activity, but may be barred from future events.
3. Participant may be asked to leave the event/activity. If the participant is a youth, the parent(s) will be called and the youth will be sent home at family's expense.

I have read and I understand and agree to comply with the above University of Illinois Extension 4-H Youth Development Code of Conduct.

<b>RISK MANAGEMENT PLAN for Edwards County 4-H Fair</b>	
<b>Edwards County 4-H</b>	<b>County Plan</b>
<b>INFORMATION</b>	
<b>Date Created:</b> 1/10/2024	
<b>Name:</b> Debra Collier	
<b>Extension Office Contact Information:</b> Edwards County Extension Office 7 N 5 <sup>th</sup> St. Albion, IL 62806 618-445-2934	
<b>EVENT OR ACTIVITY – Edwards County 4-H Fair</b>	
<b>Location and Coordinates:</b> Edwards County Fairgrounds, 90 W Pine St, Albion, IL 62806	
<b>EXTENSION CONTACT INFORMATION (Chain of Command)</b>	
<b>Office Support Assistant</b>	
Name: Dana Hart Address: 7 N 5 <sup>th</sup> St. Albion, IL 62806 Office Phone: 618-445-2934 Email: dbhart@illinois.edu	
<b>4-H Program Coordinator</b>	
Name: Debra Collier Address: 7 N 5 <sup>th</sup> St. Albion, IL 62806 Office Phone: 618-445-2934 Email: djc@illinois.edu	
<b>4-H Program Coordinator’s Supervisor</b>	
Name: Tara Buerster Address: 7 N 5 <sup>th</sup> , Albion, IL 62806 Office Phone: 618-445-2934 Email: buerste2@illinois.edu	
<b>HEALTH AND SAFETY</b>	
<b>Emergency Phone</b>	
Person Responsible for Calling: 4-H Program Coordinator or another Extension Staff Member EMT: 911 Fire: 911 Law Enforcement: 911 Poison Control: 800-222-1222 Closest Hospital: Fairfield Memorial Hospital, 303 NW 11th St, Fairfield, IL 62837 Hospital Phone: 618-842-2611	



**For Injury, Medical Emergency or Death** (these may be done simultaneously with adults helping, document who did each step to ensure all steps were completed.)

1. Call for help and secure immediate help for the injured party.
2. Secure safety of others in the area
3. Notify an Extension Staff Member
  - a. Notify Emergency contact
    - i. **Identification:** “Mrs. Jones, This is Tammy from 4-H.  
**Situation/Relationship to call:** We are at the 4-H Fair, and you are listed as Chris Clover’s emergency contact.  
**Incident:** Chris fell off a gate and has a potential leg injury.  
**Steps Taken:** We have called 911 and have an ambulance in route He will be taken to Fairfield Memorial Hospital.  
**Steps Requested:** Can you meet the ambulance at the hospital?  
**Contact:** I will text you my phone number and name so we can keep in contact about Chris.  
**Follow-up:** Do you have any questions for me at this time?
4. Notify Chain of Command List
5. Write incident report
6. Share incident report with Chain of Command
7. Notify American Income Life of situation (if reimbursement will be requested)
8. Debrief with volunteers, staff, and youth.

## **For Weather**

- Weather Watches – Dana Hart will be the point of contact and keep an eye on the weather for any sudden changes by sight and sound, as well as electronically. She will notify the Extension Program Coordinator Debra Collier if the changes warrant or give 30-minute interval updates if conditions are not changing.
- Weather Warnings
  - If the 4-H event has started, secure all to a safe area 4-H Building or COUNTRY Financial Hall. Invite all adults to the safe area or instruct where to go for safety.
- Debrief with all volunteers, staff, and youth.
  - If an event has not started, cancel the event or postpone until the warning has concluded.
- Lightning Delay
  - Secure all to an enclosure to protect from lightning in the 4-H Building or COUNTRY Financial Hall.
  - Wait 30 minutes after a lightning strike is visible to the eye or thunder is heard by the ear.

- **Flooding**  
 Assist youth in getting to higher ground immediately.  
 If life jackets are available, distribute immediately.  
 Notify emergency personnel or contacts where the group is moving to.  
 Avoid rushing waters and try to secure objects likely not to move in a flood.
- **Rain Delay**  
 Help all secure rain gear especially in cold weather.  
 If the rain hinders the youth vision for sight related activities, postpone or cancel until youth can be reasonably safe.  
 If the rain hinders movement or creates an additional slip hazard, postpone or cancel until youth can be reasonably safe.

### **Lost Group Member**

If a group member is missing, take the following steps.

- Ask each person individually if they have seen ‘Chris Clover’. Or the last time they saw them. (do not ask as a group as some people may not be attentive to the question).
- Notify another adult that a person is missing. Have them enlist help in looking.
  - o Check the common places first – bathrooms, classrooms, or sleeping rooms.
- Set up a grid to look for the person with all people either within arm’s reach or eye contact as the grid is searched.
- If a person is not found, call law enforcement for assistance.  
 At this point, follow the procedure for injured party reporting.  
 Debrief with all volunteers, staff, and youth.

### **Fire**

For a person

- Stop, drop, roll
- Limit oxygen to the fire (do not allow to run or move)
- Clear the area of people
- Treat burn according to First Aid Kit directions
- Call 911 for severe burns
- Notify parent or family member of incident
- Debrief with youth who witnessed event
- Fill out incident report form and send to Chain of Command

For an item

- Clear the area of people
- Use a fire extinguisher, aim at base of fire in a sweeping motion.
- If fire continues, call 911
- Fill out incident report form and send to Chain of Command

For a facility

- Clear the area of people.
- Use a fire extinguisher, aim at base of fire in sweeping motion.
- If fire continues, call 911 or Notify the facility owner/management.
- Fill out incident report form and send to Chain of Command
- Debrief with those who witnessed event.

**Intruder (or active firearm)** (written in conjunction with advice from county sheriff's department)

- Stay calm
- Dial 911 while you:
  - Secure your safety (you cannot help youth if you are not safe yourself)
  - Secure the safety of youth and other people
  - Cover and Conceal the group from the threat by fleeing first, if possible.
- As law enforcement arrives
  - LISTEN, don't argue
  - Put your hands up above your head
  - Follow Directions, do not try to talk to law enforcement
  - If you are in cover – wait for 'all clear' before coming out.
  - Adapt to your surroundings.
  - Don't hold any item that could appear to be a weapon
- Check-in with the coordinator/staff and law enforcement before leaving with your parent/family member.
- Fill out incident report (and/or obtain for law enforcement)
- Notify the Chain of Command

**Do NOT try to be a hero! "Flight before Fight"**

## 2024 Edwards County 4-H Fair Schedule

Monday, June 24...**Clothing Show** (COUNTRY Financial Hall) registration

5:00 p.m./judging at 5:30 p.m.

**Food Show** (COUNTRY Financial Hall) registration

5:00 p.m./judging at 5:30 p.m.

Saturday, July 13...**General Show** (COUNTRY Financial Hall) registration Friday evening

5:00—6:00 p.m. **OR** 30 minutes prior to club judging/Saturday morning judging at

8:00-12:00/12:00-1:00 p.m. Viewing of projects/ 1:00 p.m. Awards, pictures and project pick up

Thursday, July 18 ...**Fair Clean Up** 6:00 p.m.—7:30 p.m. (turn in records by 7 p.m.)

**All livestock projects including small animals must be registered at Fairgrounds Clean Up.**

Tuesday, July 23 ...**Dog Show** 6:00 p.m.

Thursday, July 25 ...**Poultry Show** 5:30 p.m.

Friday, July 26 ...**Equine Show** 6:00 p.m.

Saturday, July 27...**Fair Parade** 10:00 a.m.

Sunday, July 28...**Rabbit Show** 2:00 p.m./**Small Animal Show** 2:00 p.m.

Registration 1:30 p.m.

**Flag Raising** 7:00 p.m.

Monday, July 29 ...**Weigh-In** 6:00 a.m.

(Edwards County Farm Bureau will furnish snacks.)

**Livestock Registration** 6:00—7:30 a.m.

**Livestock Judging Mini Session** 9:00 a.m.

**Livestock Judging Contest** 9:30 a.m.

**Sheep Show** 2:00 p.m.

Tuesday, July 30 ...**Swine Show** 8:00 a.m.

**Goat Show** 1:00 p.m.

**Bucket Calf Interviews, as scheduled by Chairperson**

Wednesday, July 31 ...**Bucket Calf Show** 8:00 a.m.

**Beef Show** 8:30 a.m.

**Tractor Rodeo** 1:00 p.m.

**Master Showmanship** 6:00 p.m.

Thursday, August 1... **Youth Auction** 9:00 a.m.

**ALL EVENTS ARE OPEN TO THE PUBLIC**

# Edwards County

July/August

\*\*MONDAY, JUNE 24 2024—Food & Clothing  
Registration 5:00 p.m.; Judging 5:30 p.m.

Sun	Mon	Tues	Wed	Thu	Fri	Sat
7	8	9	10	11	12	13 General Show Friday: Reg. 5:00-6:00 p.m Saturday Register as You come. Judging 8:00-12.00
14	15	16	17	18 Fair Clean UP 6:00-7:30 p.m. Records Due 7:00 p.m.	19	20
21	22	23 Dog Show 6:00 p.m.	24	25 Poultry Show 5:30 p.m.	26 Equine Show 6:00 p.m.	27 Fair Parade 10:00 a.m.
28 Rabbit/Small Animal Show On Site 1:30 p.m. Judging 2:00 p.m. Flag Raising 7:00 p.m.	29 Weigh-In 6:00 a.m. Registration 6:00-7:30 a.m. Livestock Mini-Session 9:00 a.m. Livestock Judging 9:30 a.m. Sheep Show 2:00 p.m.	30 Swine Show 8:00 a.m. Goat Show 1:00 p.m. Bucket Calf Interviews Scheduled by Chairperson	31 Bucket Calf Show 8:00 a.m. Beef Show 8:30 a.m. Tractor Rodeo 1:00 p.m. Master Showmanship 6:00 p.m.	1 Youth Auction 9:00 a.m.	2	3
4	5	6	7	8	9	10

## **Project Registration for 2024**

Project Registrations will be done online again this year. You will register what you will be bringing to fair and the details of which classes you will be participating in. (more information on how to do this process will be available soon). Be sure to sign up for showmanship classes too.

If you do not have a computer or internet access, contact the office 618.445.2934. (keep in mind you must have been enrolled in all projects by March 1, 2024)

**It is the responsibility of the member to register for what they will be bringing to fair by June 1, 2024.**



**A Reminder-  
Random Farm Visits may be made again this year by Extension representatives.**

## 2023-2024 Edwards County 4-H COMMITTEES

**BEEF** *Chairman Greg Shelton 618-445-3929; Chase, Hallie: Nolan Owings, Ringman 302-1093; Jeremy Wyatt, Ringman 302-1579, Gabe; Darby Boewe, Ringman 456-3735; Don, Kathy St.Ledger 445-3791; Jim Heindselman 445-2598; Curtis Kelsey, Lidia, Jaxon 446-3134; Zeb, Zoie Ankenbrand 446-5102; River Greathouse 445-7802; Wyatt, Cody Greathouse 456-3901; Heather Duncan, Cheyenne, Josie 302-0971; Travis Pritchett, Waylon 445-7196; Drake Kelsey, Kaysen, Kyntlee 240-6123; Doug Hinderliter, Kelly 384-1932; Alyssa Smith 445-6028; Braydon Sanford 446-5330; Justin Perkins, Conner, Ava 445-7920; Kamryn Trowbridge 302-0327; Lane, Ty Smith 445-1555; Skylar Greathouse 302-4646; Elizabeth Spillman, Harrison Lovellette 839-4720; JW Simms-Reisner 562-5972; Tyler Knakmuhs 263-2033*

**BUCKET CALF** *Chairman Jeremy Wyatt 302-1579; Justin Perkins, Ava 445-7920; Kayleigh Sanford 446-5330; Clay, Cole Smith 445-1555; Cheyenne, Josie Duncan 302-0971*

**CLOTHING & TEXTILES** *Chairperson Abby Shelton 445-3929; Hallie; Alivia Houser 554-7894; Isabella Jones 919-0776; Olivia Bunting 445-7474; Hannah Perry 217-369-0514*

**GOAT** *Chairperson Daniel Troyer, 445-7316; Lucas, Ellie: Maverick Moore 446-3178; Campbell, Parker Biggs 599-2999; J.W. Simms-Reisner 562-5972; Chloe Iles 384-6924; Brayden Childers 262-1113; Bristol Duncan 445-1279; Conner, Ava Perkins 445-7920; Kamryn, Connor, Cash Trowbridge 554-5330; Adalynn Potter 214-7089; Kim VanMatre, Kylar 445-1712; Grace, Andrew Glover 302-0442; Trenton Jefferson 302-0077; Ava Sharp 302-1868; Emersyn McVaigh 302-1080; Lane Abbott 240-0419; Brooklyn Kitchene 302-7258;*

**DOG** *Chairperson Jo Rector 446-3282; Sam, Reagan Bogle 446-3318; Elizabeth Spillman, Harrison Lovellette 839-4720; Allison Groff 445-2142; Kwade Sawyer 302-7665; Keira, Breeana Willett 445-7593; Skylar Greathouse 302-4646 Haley Kelsey, Kaysen 240-6123; Elaina Kearbey 417-569-5730; Kim VanMatre, Kylar 445-1712; Alyssa Smith 445-6028; Makayla Carrell 839-7578; Londyn Kirkpatrick 760-887-0054; Liam, Emmet Mckinney 456-3050; Faith Hawkins 812-205-5217; Alivia Houser 554-7894; Ava Kleinschmidt 375-1368; Lucy Harrison 445-7106*

**EQUINE** *Chairperson Derra Williams, 445-7724; Elizabeth Spillman, Harrison Lovellette 839-4720; Olivia Bosecker 445-7017; Natalie, Josie Shelby 445-7137; Alyssa Smith 445-6028; Waylon Pritchett 445-7196; Kendal Loudermilk 302-1541; Elaina Kearbey 417-569-5730*

**FOODS & NUTRITION** *Chairperson Debbie Fearn 446-3246; Addison Anderson 302-0467; Aly Williams 445-7724; Brook Greathouse 456-6020; Hayley, Hannah Perry 217-369-0514; Brayden, Kayleigh Sanford 446-5330; Kolby Terry 445-1343; Ellie Troyer 927-5448; Landon Loyd 925-4087; Emily, Sarah Spray 302-7955; Madison, Myah Miller 302-1627; Rosen Bell 383-4796; Isabella Jones 919-0776; Kamryn, Cash Trowbridge 554-5330; Hope Adams 302-7289; Aleya, Lillian Bare 445-7754; Aurora Cullison 445-7327; Sarafina Henson 830-7061; Kelly Hinderliter 812-454-9927; Ava Kleinschmidt 375-1368; Elise Rude 302-1451;*

**GENERAL PROJECTS** *Co-Chairpersons Kathy St. Ledger 445-3791; Debbie Fearn 446-3246; Norma Hamilton 446-3357; Wyatt Johnson 240-9105; Addison Anderson 303-0467; Hayley, Hannah Perry 217-369-0514; Chase, Hallie Shelton 445-3929; Olivia Bunting 445-7474; Adalynn Potter 214-7089; Lydia, Jackson Shelby 838-8424; Sam, Reagan Bogle 446-3318; Brayden Childers 262-1113; Matthew, Aleya, Lillian, Hannah, Zoey Bare 445-7754; Grant Doelling 262-1030; Kayleigh Sanford 446-5330, Kylar VanMatre 445-1712; Allison, Blake Groff 445-2142; Lucas, Ellie Troyer 927-5448; Aiden, Anthony, Alivia Houser 554-7894; Keira, Breeana Willett 445-7593; Madison, Jackson Miller 302-1627; Elaina, Graham Kearbey 417-569-5730; Lane Abbott, Diezel Toutloff 240-0419; Conner Perkins 445-7920; Oliver Gawthorp 812-499-2730; Kylar VanMatre 445-1712; Evalynn Edwards 839-8811; Makayla Carrell 839-7578; Gracie Fenton 456-8984; Zoie, Zeb Ankenbrand 446-5102; Brook, Cody Greathouse 456-6020; Londyn Kirkpatrick 760-887-0054; Ryleigh, Emerie Moore 263-2748; Hope Adams 302-7289; Austin Dunaway 599-0910; Karmyn Duncan 445-1279; Easton, Eli Garrett 302-3070; Sarafina Henson 830-7061; Gwendolyn Hug 419-438-4445; Ben, Aubrie Kelsey 302-1200; Liam, Emmet McKinney 456-3050; Violet Rude 302-1451; Owen Schuh 263-8287; Lane, Ty Smith 445-1555; Jesse Spray 445-7312; Selah Trimble 302-0850; Justin Bunting 839-1388*

**MASTER SHOWMANSHIP** *Chairman: Greg Shelton 618-445-3929; Jo Rector 446-3282; Don, Kathy St. Ledger 445-3791; Daniel Troyer 445-7316; Cody, Derra Williams 445-7882; Derek Moore 599-3330; Trent Thompson 302-7980*

**POULTRY** *Chairman Bruce Delancy 262-1113; Caesyn Cy Nelson 445-3299; Natalie, Josie Shelby 445-7137; Kamryn, Cash, Xandar Trowbridge 554-5330; Matt, Aleya, Hannah Bare 445-7754; Owen, Cooper, Brier Lynch 924-4283; Bristol, Karmyn Duncan 445-1279; Wyatt Johnson 240-9105; Lane Abbott, Diezel Toutloff 240-0419; Kolby, Mayleigh Terry 445-1343; Kylar VanMatre 445-1712; Elijah, Ethan Compton 302-0601; Aiden, Nathaniel Hawkins 812-205-5217; Adalynn Potter 214-7089; Kiera, Breeana Willett 445-7593; Liam, Emmet McKinney 456-3050; Emily, Sarah Spray 302-7955; Hanna Waggoner 354-0913; Gabriella Spencer 384-0579; Olivia Bosecker 445-7017*

**RABBIT** *Co-Chairpersons Michelle Edmundson 445-1493; Missy Fisher 445-1610; Brayden Childers 262-1113; Elizabeth Spillman, Harrison Lovellette 839-4720; Aleya, Lillian, Hannah, Zoey Bare 445-7754; Hayley, Hannah Perry 217-369-0514; Kamryn, Cash, Xandar Trowbridge 554-5330; Autumn Shelby 263-8741; Kylar VanMatre 445-1712; Liam, Emmet McKinney 456-3050; Natalie, Josie Shelby 445-7137; Jackson Shelby 838-8424; Cole, Clay Smith 445-1555; Elijah, Ethan Compton 302-0601; Gracie Fenton 456-8984; Lane Abbott, Diezel Toutloff 240-0419; Hope Adams 302-7289; Emmalyn Jones 919-0776; Olivia Bosecker 445-7017; Faith Hawkins 812-205-5217; Ava Kleinschmidt 375-1368; Trenton Jefferson 302-0077; Oliver Gawthorp 812-499-2730*

**REPAIR** *Chairman Ray Livesay 375-4681; Leslie Smith 445-2382; Owen Lynch 924-4283.*

**SHEEP** *Chairman Cody Williams 445-7882, Aly, Sydney Williams; Amanda Simms, J.W. Simms-Reisner, Kenleigh Garrett 562-5972; Gabe Wyatt 302-1579; Brooklyn Kitchene 302-7258; JJ, Emmitt Spray 445-7312; Hanna Waggoner 354-0913; Gabriella Spencer 384-0579; Ava Sharp 302-1868*

**SHOOTING SPORTS** *Chairperson Allen Shilling 618-445-7570; Anthony Houser 554-7894 Matthew, Aleya, Lillian, Hannah, Zoey Bare 445-7754*

**SMALL ANIMALS** *Co-Chairpersons Debbie Fearn 446-3246, Kathy St. Ledger 445-3791; Sam, Reagan Bogle 446-3318; Elizabeth Spillman 839-4720; Allison Groff 445-2142; Kolby Terry 445-1343; Brayden, Kayleigh Sanford 446-5330; Emmalyn Jones 919-0776; Oakley Sawyer 302-7665; Olivia Bunting 445-7474; Gracie Fenton 456-8984; Kentley Kelsey 240-6123; Oakley, Dane Sawyer 302-7665*

**TRACTOR RODEO** *Chairman Steve Greathouse; Greg Shelton, Chase, Hallie 445-3929; James Ankenbrand, Zeb 446-5102; Kolby Terry 445-1343; Kaysen, Kentley Kelsey 240-6123; Waylon Pritchett 445-7196; Cody Williams, Sydney 445-7882*

**SWINE** *Co-Chairmen Derrick Moore 599-3330; Ryleigh, Emerie; Trent Thompson 302-7980; Don, Kathy St. Ledger 445-3791; Heather Duncan, Cheyenne 302-0971; Addison Anderson 302-0467; Wyatt, Brook Greathouse 456-3901; Brayden, Kayleigh Sanford 446-5330; Lillian, Lola Nussmeyer 516-1037; Brayden Childers 262-1113; Jeff Loyd, Landon 925-4087; Skylar Greathouse 302-4646; JJ, Emmitt Spray 445-7312; Justin Bunting 839-1388; Kendal Loudermilk 302-1541; Zoie Ankenbrand 446-5102; Aly, Sydney Williams 445-7882; Evalynn Edwards 839-8811; Elizabeth Spillman, Harrison Lovellette 839-4720; Heston Sharp 302-1868; Kamryn Trowbridge 302-0327; Adelyn Vallette 302-1297;*



## 2023-2024 EDWARDS COUNTY 4-H GENERAL RULES

### PLEASE READ TO CLUB MEMBERS:

1. The Edwards County 4-H Shows will be open to boys and girls who are regularly enrolled members of Edwards County 4-H and who are 8 through 18 years of age as of September 1 of the current 4-H year or in the 3rd grade. Must be an Edwards County 4-H member in order to show.
2. In case a 4-H exhibitor desires to show in any of the open classes or the Junior Show of the fair, in addition to the 4-H classes, it will be necessary to make entry in regular form and comply with the rules of the Fair Association governing these classes.
3. After joining, club members must have attended at least 2/3 of the regular meetings of the club to compete in any of the 4-H Shows.
4. Project exhibit requirements will be set up annually by the Extension County 4-H Committee. Project exhibits will be determined by requirements in the project books.
5. In order for an individual to participate in any project, they must be enrolled in 4-H in Edwards County.
6. No 4-H member may exhibit any animal or article that is not part of his/her project.
  - A) All market barrows, goats, wethers and ewe lambs must be in member's possession at least 60 days prior to the show.
  - B) Market goats will need to be between 4-8 months old at the time of the show.
  - C) Gilts and ALL swine breeding stock and beef or dairy yearling heifers must be in the member's possession by April 1.
  - D) Bucket Calves must be born between February 1 and April 1. They must be in member's possession within 2 weeks of birth and must be at least 90 days old when shown.
  - E) Steers must be in member's possession by January 1.
7. After the first year in 4-H, a member must carry more than one project unit.
8. All record books for all projects must be brought with the exhibit to the shows and checked by a committee member before project is judged. Up-to-date livestock records will be checked on fairgrounds clean-up day.
9. 4-H members who are unable to be present with their project may have another Edwards County 4-H member show that project provided they have made a written request and have their leader's written permission.
10. In order for a 4-H member to participate in showmanship classes, they must use an animal they have entered and shown in the specific specie show.
11. Ribbons and premiums will be given for exhibits shown at a county 4-H show only.

12. All 4-H projects must be shown on the date of the 4-H show or no premium will be received.
13. Blue ribbons for A ratings, red ribbons for B ratings, white ribbons for C ratings, and purple ribbons for State Fair Dress Revue competition will be given.
14. Money will be allotted to Edwards County for the 4-H Show by State of Illinois for each 4-H member who exhibits. In each class the member will receive the amount allocated per unit for the group in which his\her exhibit may be placed.
15. Exhibitors are limited to two entries in each class unless otherwise specified. Note that in the market classes, exhibitors are limited to two entries of each species no matter what the weight. An animal can only be shown for one premium unless it is in a group class as well. The Exhibitor will receive one premium per class exhibited.
16. Completed record books must be delivered to the club leader before premium money is paid.
17. All 4-H livestock must be in 4-H barn by midnight Sunday and properly entered in various show classes by 10:00 a.m. on Monday of fair unless otherwise designated by 4-H committee. (The Committee is to be designated by the Extension Council.) Those exhibitors not fulfilling the above-described regulations will not be eligible to receive a premium.
18. All animals shown in the 4-H classes **MUST** be kept in the 4-H barn as long as there is room unless other arrangements have been approved by the Extension Council 4-H Committee. Beef, swine, sheep, goats, poultry and dogs will be shown in the 4-H arena.
19. Exhibitors must furnish feed, bedding, pans, and fans.
20. Each exhibitor is required to keep his pen or stall and the space adjacent to it neat and clean at all times. Space between pens or stalls must be kept open at all times.
21. Appropriate clothing should be worn when showing your projects for judging. No shorts should be worn when showing your livestock. This includes the livestock auction.

**DISCLAIMER-**

**“The Department of Agriculture shall use its best efforts to secure sufficient appropriations to fund premiums. In any year for which the General Assembly of the State of Illinois fails to make an appropriation sufficient to pay such premiums, premium amounts may not be accurately reflected in this Premium Book.”**

**Tax Implications for Prizes, Gifts or Awards**

Program Participants (including minors) will be required to provide their social security number or foreign national tax ID number prior to receiving a prize, gift or award to ensure proper IRS reporting as required by law. This sensitive information is kept confidential and handled through security protected software (PEAR). Participants will not be eligible for prize, gift or award if social security or foreign national tax ID information is not provided.

22. 4-H animals may leave the fairground after the Auction when Stalls are Clean on Thursday, except those market animals going for immediate slaughter, which will be released immediately following the sale. (This applies to 4-H and Junior Fair animals.) EXCEPTION: Rabbit, Poultry, Dog, and Small Animal projects may leave immediately after the show.
23. 4-H award forms will be graded by the Extension Council 4-H Committee or others familiar with 4-H requirements.
24. Changes in these rules or exceptions to them may be made only by University of Illinois Extension 4-H Youth Development staff, the County Director, or the event superintendent, and/or the Edwards County 4-H leaders in consultation with Extension staff.
25. In the event of disputes or unforeseen circumstances University of Illinois Extension 4-H Youth Development staff, the County Director, or the event superintendent, and/or the Edwards County 4-H leaders shall make the official ruling in consultation with Extension staff. **Protests**-All protests of eligibility of exhibitor or animal must be filed in writing at the Extension Office at least 48 hours before the show begins. A deposit of \$50 must accompany the protest. The deposit will be returned to the person filing the protest if the protest is proven. The exhibitor found in violation will forfeit all premium money due that animal. If the protest is found to be invalid or un-proven, the protestor will forfeit the deposit.
26. Any project not listed in this book will turn in record book pertaining to that project.
27. All 4-H clubs in Edwards County are open to any boy or girl, 8-18 as of September 1 of the current 4-H year, regardless of race, creed, color, sex, or national origin.
28. **All Displays should fit into an area no larger than 2' wide x 15 " deep. Posters should be no larger than 22" x 30". Use these measurements unless otherwise stated.**

**Any boy or girl who is enrolled as a 4-H member of current 4-H year may exhibit at the Illinois State Fair providing the exhibitor meets the eligibility rules for participation. Be sure to check with the Illinois State Fair rules for show rules and display specs.**

**The Illinois State Fair, State 4-H Office, and local University of Illinois Extension personnel or their assigned agents do not assume liability for loss, theft, or damage to an exhibit.**

If you need a reasonable accommodation to participate in any of the 4-H Shows, please contact the County Director, Tara Buerster at the following phone number and/or address:  
*University of Illinois Extension - Edwards County, 7 North Fifth Street, Albion, Illinois, 62806, 618-445-2934.* Early request are strongly encouraged to allow sufficient time for meeting your access needs.

## Edwards County 4-H Records

Throughout the year, it is important to up-date and maintain your 4-H records. This checklist was created in order for members to know when records need to be up-to-date and when they need to be completed.

Goal Sheets (Planning For My 4-H Project Work 8-11; Illinois Project Plan 12-14; Illinois Advanced Project Plan 15-18)

- ◆ Food, Clothing, and General Projects: Up-to-date and signed goal sheets, complete with accomplishments and six things you learned, need to accompany food, clothing, and general projects at the shows.
- ◆ Livestock Projects: Up-to-date and signed goal sheets, complete with accomplishments and six things you learned, must be turned in at fair grounds clean-up.  
\*\*\*Members completing the updated Livestock Record (Revised August 2016) do not need to fill out a goal sheet for that livestock project.
- ◆ Completed goal sheets will be turned in at the end of the 4-H year.

Livestock Records (including specie specific records for horse, rabbit, cat, dog, poultry, and bucket calf):

- ◆ Up-to-date and signed livestock records must be turned in at fair-grounds clean-up.
- ◆ Completed livestock records will be turned in at the end of the 4-H year.

# CLOTHING SHOW

## COUNTRY Financial Hall

### Monday, June 24, 2024

Registration will begin promptly at 5:00 p.m. All members should be at the COUNTRY Financial Hall as soon after 5:00 p.m. as possible to receive their exhibit tags. Registration will close at 5:30 p.m. Any late entry will automatically take a cut in rating.

## CLOTHING & TEXTILES

ALL PROJECT PLANNING GUIDES MUST BE BROUGHT TO SHOW WITH THE PROJECT. RECORD BOOKS (GOAL SHEETS WILL BE ACCEPTED) MUST BE CHECKED BEFORE PROJECT IS SHOWN.

All exhibits entered in Clothing 1-3 will be judged based on their construction and fit (if applicable). Exhibitors bringing garments should not wear their garments when they arrive for judging. The garment will be reviewed by the judges for construction first. Exhibitors will be asked to change into the garment as the second step of the judging process. If the garment was constructed for another individual, that individual must be present to wear the garment for the judge. (Only the exhibitor who made the garment is eligible for ribbon and premium.) Construction and appearance will both be considered during judging. If a pattern was used to make the item, the pattern instructions, either written or electronic, are to be included with the exhibit. Exhibit tags should be attached to the garment, not to the hanger.

Members wishing to exhibit knitted items should enroll in Visual Arts Fiber (if original) or Visual Arts Heritage Arts (if made from a pattern). **We strongly encourage youth interested in pursuing quilting to enroll and exhibit in the Visual Arts Quilting project area.** Youth may still exhibit quilts in any level of Clothing as a "Sewn Non-Clothing" item, but these quilts will be judged using the Clothing rubric that evaluates the sewing skills and construction of the item. If exhibiting quilts in the Clothing area, all work on the quilt **MUST** be completed by the 4-H member. You cannot exhibit a quilt that was quilted by someone else. Quilts can be hand OR machine quilted as long as ALL work is completed by the exhibitor.

## CLOTHING

**Clothing 1 - FUNdamentals:** (SF 50151A, 50151B, 50151C)

Exhibit one of the following in either the Non-Sewn, Sewn Non-Clothing, or Sewn Clothing exhibit divisions:

**Non-Sewn Exhibits (SF 50151a)** Exhibit one of the following:

- Clothing Portfolio - Complete at least three different samples/activities from Chapter 2 and/or Chapter 3 of the project manual. Examples of samples you might include: How Two Magically Become One, pages 85-86; No Fear of Fray, pages 93-95; Two Sides of the Moon, pages 97-99; On the Flip Side, pages 101-104; Basic Hand Sewing Skills, pages 106-108. The Portfolio should be placed in an 8 ½ x 11, 3 ring binder. Include an appropriate cover, dividers, and table of contents. NOTE - additional pages can be added each year but must be dated with the year. See pages 9-10 of project manual for portfolio formatting.
- Fabric Textile Scrapbook - Must include at least 5 different textile samples. Use Textile Information Cards template on page 41 in project manual to identify fabric swatches. Completed textile cards should be placed in an 8 ½ x 11, 3 ring binder. Include an appropriate cover. See project manual, pages 42-74, for fabric options and fabric science experiments.
- What's the Difference - What's the Price Point - Exhibit may include a notebook, poster, small display sharing a project comparison and price point. See activity, pages 118-120. Exhibit should include PHOTOS; NO actual PILLOWS.

**Sewn Non-Clothing Exhibits (SF 50151B) Exhibit one of the following:**

- Pillowcase
- Simple Pillow - no larger than 18" x 18"
- Bag/Purse - no zippers or button holes
- Other non-clothing item using skills learned in project manual

**Sewn Clothing Exhibits (SF 50151C) Exhibit one of the following:**

- Simple top
- Simple pants, shorts, or skirt - no zipper or button holes
- Simple Dress - no zipper or button holes
- Other - other wearable item using skills learned in project manual (apron, vest, etc.)

***Beginning Sewing Exhibits*** – exhibits in Clothing 1 must be made from medium weight woven fabrics that will sew and press smoothly, flannel/fleece is acceptable. Solid color fabrics or those having an overall print are acceptable. We strongly advise youth do not select fabrics with plaid or stripe patterns as judges will expect stripes to match at seams, which is a more advanced-level skill. NO NAPPED or JERSEY KNIT fabric. Patterns should be simple WITHOUT DARTS, SET-IN SLEEVES, and COLLARS. Raglan and loose flowing sleeves are acceptable.

**Clothing 2 - Simply Sewing: (SF 50152A, 50152B, 50152C)**

Exhibit one of the following in either the Non-Sewn, Sewn Non-Clothing, or Sewn Clothing exhibit divisions:

**Non-Sewn Exhibits (SF 50152A) Exhibit one of the following:**

- Clothing Portfolio - Complete at least four different samples/activities from Chapters 2, 3 AND/OR 4 of the project manual. The Portfolio should be placed in an 8 ½ x 11, 3 ring binder. Include an appropriate cover, dividers, and table of contents. NOTE - this can be a continuation of a Portfolio created in STEAM Clothing 1. Additional pages can be added each year but must be dated with the year created. See project manual, pages 9-11 for portfolio formatting.
- Expanded Textile Science Scrapbook - Must include at least 10 different textile samples. Use Textile Information Cards template on page 39 in project manual to identify fabric swatches. Completed textile cards should be placed in an 8 ½ x 11, 3 ring binder. Include an appropriate cover. See Project, pages 40-82 for fabric science experiments.
- Design Basics - Understanding Design Principles - Exhibit should include a learning experience that demonstrates the design principles and elements involved when selecting fabric for clothing and accessories. See project manual, pages 17-20 for design suggestions.
- Entrepreneurial Sewing - Exhibit should highlight items you made for sale online. Create an exhibit that displays products you made and posted online. Refer to the project manual, pages 161-167, for information on how to analyze the cost of similar purchased items to determine pricing of your products. The exhibit may be a notebook, poster or small display.



**Sewn Non-Clothing Exhibits (SF 50152B) Exhibit one of the following:**

- Recycled Clothing Accessory - Create a clothing accessory made from a used item. The item must be changed in some way in the redesign process. The finished accessory must reflect at least one skill learned in the project and exhibitor should be able to identify the skill used. A before picture and a description of the redesign process must accompany the exhibit. Clothing accessory may include: hat, bag, scarf, belt, etc.
- Non-clothing item OR Clothing Accessory - Create a non-clothing item or clothing accessory using at least one skill learned in this project. Exhibitor should be able to identify the skill used.

**Sewn Clothing Exhibits (SF 50152C) Exhibit one of the following:**

- Recycled Clothing - Create a garment from used textile based items. The original used item must be redesigned (not just embellished or decorated) in some way to create a new wearable piece of clothing. The finished garment must reflect at least one skill learned in this project and exhibitor should be able to identify the skill used. A before picture and a description of the redesign process must accompany the exhibit.
- Constructed garment - Any garment with facings or curves. Should use at least one skill learned in this project and exhibitor should be able to identify the skills used. Garment should be appropriate for the age and experience of the member.

**Clothing 3 - A Stitch Further: (SF 50153A, 50153B, 50153C)**

Exhibit one of the following in either the Non-Sewn, Non-Clothing, or Sewn Clothing exhibit divisions:

**Non-sewn Exhibits (SF 50153A) Exhibit one of the following:**

- Clothing Portfolio - Complete at least four different samples/activities from Chapters 2, 3 AND/OR 4 of the project manual. The Portfolio should be placed in an 8 ½ x 11, 3 ring binder. Include an appropriate cover, dividers, and table of contents. NOTE - this can be a continuation of a Portfolio created in STEAM Clothing 1 and/or STEAM Clothing 2. Additional pages can be added each year but must be dated with the year created. See project manual, pages 11-13 for portfolio formatting.
- Expanded Textile Science Scrapbook - Must include at least 10 different textile samples. Use Textile Information Cards template on page 29 in project manual to identify fabric swatches. Completed textile cards should be placed in an 8 ½ x 11, 3 ring binder. Include an appropriate cover. See project manual pages 39-52 for fabric science experiments.
- Advanced Entrepreneurial Sewing - Using knowledge gained in project manual, Chapter 5, display one sample product with a business plan that includes a business ID and logo. The exhibit may be a notebook, poster or small display.

**Sewn Non-Clothing Exhibit (SF 50153B) Exhibit one of the following:**

- Recycled Clothing Accessory - Create a clothing accessory made from a used item. The item must be changed in some way in the redesign process. The finished accessory must reflect at least one skill learned in the project and exhibitor should be able to identify the skill used. A before picture and a description of the redesign process must accompany the exhibit.
- Non-Clothing Item OR Clothing Accessory - Create a non-clothing item or clothing accessory using at least one skill learned in this project. Exhibitor should be able to identify the skill used.

### Sewn Clothing Exhibit (SF 50153C) Exhibit one of the following:

- **Recycled Clothing** - Create a garment from used textile-based items. The original used item must be re-designed (not just embellished or decorated) in some way to create a new wearable piece of clothing. The finished garment must reflect at least one skill learned in this project and exhibitor should be able to identify the skill used. A before picture and a description of the redesign process must accompany the exhibit.
- **Constructed garment** - Any garment constructed by the member which is appropriate for the age and experience of the exhibitor. Should use at least one skill learned in this project and exhibitor should be able to identify the skills used. Possible examples are wool garment, dress or jacket with set in sleeves and zipper or buttons and button holes, suit, evening gown or sport outfit.



### **CLOTHING: SHOPPING**

#### **Shopping in Style (SF 50154, 50155, 50156)**

Members are encouraged to spend more than one year involved in this project, so they have time to learn what clothing styles look best on them while they also gain skills in building a versatile wardrobe and staying within their budget. Each year enrolled in Shopping should build on previous year's learning experience. For all levels of this project, participants should bring a garment to display and model for the judge.

Exhibit one of the following options that align with the Shopping in Style level:

#### **Shopping in Style:**

**Beginning** -(SF 50154)(Levels 1 &2) Choose one of the following activities from Unit 1 or Unit 2 of the project book to exhibit:

- Exhibit should consist of a garment that reflects your personal style along with a poster or report that 1) explains how this garment reflects your style and how it influences what others think of you; **OR** 2) how your personal style either aligns or contradicts what is considered to be "in style" today. **OR**
- Exhibit should include a garment you purchased along with a poster or report that explains or illustrates how this garment is either 1) a modern version of a fad or fashion from an earlier decade; **OR** 2) how this garment reflects a different ethnic or cultural influence. Exhibit should include garment you purchased along with a poster or report that provides 1) a body shape discussion and how body shape influences clothing selections; **OR** 2) a color discussion that provides an overview of how different colors complement different hair colors and skin tones and how that influenced garment selection. Poster or report may include pictures from magazines, the internet or actual photos of garments. **OR**
- Exhibit should include garment you purchased along with a poster or report that 1) explains how this garment uses the principles of design lines to create an illusion to alter appearance; **OR** 2) explains how color and texture of fabrics can complement or enhance appearance. Poster or report may include pictures from magazines, the internet, or actual photos of garments.



**Intermediate** - (SF 50155)(Levels 3 & 4) Choose one of the following activities from Unit 3 or Unit 4 of the project book to exhibit:

- Exhibit should include two clothing items that were previously a part of your wardrobe that still fit but you don't wear anymore and pair them with something new to make them wearable again. Also include a report that explains why the garment was not being worn and what you did to transform it into a wearable garment again. **OR**
- Exhibit should include at least five pieces of clothing that exhibitor can mix and match to create multiple outfits. Include a poster or report that includes a clothing inventory AND describes what you have learned by completing this activity. Please bring at least one complete outfit from the selected clothing to display and model for the judge. **OR**
- Exhibit should include garment you purchased along with a poster or report that 1) includes a wardrobe inventory which indicates why you selected the garment you did, clothing budget, and cost of garment; **OR** 2) explains how advertising influences clothing purchases making a distinction between wants and needs; and how the purchase of this garment compliments and/or extends your wardrobe. **OR**
- Exhibit should include garment you purchased along with a poster or report that 1) describes a cost comparison of this item completed by the exhibitor when purchasing the garment; should include variety of shopping options and/or price tracking at stores over a period of time; **OR** 2) provides a quality comparison rating the specific clothing item purchased based on care, construction, cost and unique features; should include construction quality details, design features that influenced selection, cost per wearing, and garment care.

**Advanced** - (SF 50156)(Levels 5 & 6) Choose one of the following activities from Unit 5 or Unit 6 of the project book to exhibit:

- Exhibit should include garment you purchased along with a poster or report that summarizes care requirements not only for this garment but also for garments made of other natural and synthetic fibers; exhibit should also include a care cost analysis for garments of different fibers. **OR**
- Exhibit should include garment you purchased which you have repaired or altered along with a poster or report that provides a clothing inventory list which includes cost savings for repaired items as compared to purchasing replacement garments. **OR**
- Exhibit should include multiple garments you purchased along with a poster or report that provides plans and commentary for a fashion show that that would capture the attention of an audience. Fashion show plans should identify target audience, include show venue, purpose of the show, and logistical plan for the fashion show. This should also include a financial plan. Exhibitor should be prepared to demonstrate modeling skills and bring at least one garment to display and wear.

**CLOTHING SCORECARD**

NAME \_\_\_\_\_

**CONSTRUCTION**

- 1. Choice of Method \_\_\_\_\_(5)
- 2. Workmanship
  - a. Tension \_\_\_\_\_(1)
  - b. Stitch size \_\_\_\_\_(1)
  - c. Facings and Interfacings \_\_\_\_\_(1)
  - d. Straight stitching \_\_\_\_\_(1)
  - e. Seam finishes \_\_\_\_\_(1)
- 3. Grainline \_\_\_\_\_(5)
- 4. Pressing \_\_\_\_\_(5)
- 5. Cleanliness and care of garment \_\_\_\_\_(5)
- 6. Hem width for fabric and design \_\_\_\_\_(5)
- 7. Other -- buttonholes, snaps and hook, top-stitching, belt loops, roll of collar, etc. \_\_\_\_\_(5)

\_\_\_\_\_(35)

**FIT OF GARMENT**

- 1. Bust Line - Darts \_\_\_\_\_(5)
- 2. Hip Line - Darts \_\_\_\_\_(5)
- 3. Hem Length and evenness \_\_\_\_\_(5)
- 4. Neckline \_\_\_\_\_(5)
- 5. Shoulder Length \_\_\_\_\_(5)
- 6. Sleeve or arms eye \_\_\_\_\_(5)
- 7. Waistline \_\_\_\_\_(5)
- 8. Other (\_\_\_\_\_) \_\_\_\_\_(5)

\_\_\_\_\_(40)

**COLOR AND DESIGN**

- 1. Fabric appropriate for pattern design \_\_\_\_\_(5)
- 2. Color suitable for individual \_\_\_\_\_(5)
- 3. Design suitable for figure \_\_\_\_\_(5)

\_\_\_\_\_(15)

**OVERALL APPEARANCE**

- 1. Accessories \_\_\_\_\_(5)
- 2. Modeling ability (posture) \_\_\_\_\_(5)

\_\_\_\_\_(10)

\_\_\_\_\_(100)

## GENERAL INFORMATION FOR CLOTHING MEMBERS

1. A neat job and knowing why you did something in a certain way is important.
2. Press as you sew!!!
3. Check in the supplemental book, "Let's Sew" by Nancy Zieman, to see how to sew on hooks at the top of zipper.
4. Watch your zipper construction.
5. Interfacings, if needed, should be used on the bodice where facings are used. Almost all garments could use lightweight woven interfacings. It is best not to use iron-on or heavy, stiff interfacings with some fabrics especially with most knits. Under stitch collar interfacing to keep from rolling.
6. Be sure and ease the A-line hems in instead of pleating. A gathering stitch at the top of a hem will help. Try to reduce use of lace seam tape. With double knits, the blind stitching hem is most suitable.
7. Follow the directions given in "Let's Sew" by Nancy Zieman for hems, especially for the size of the stitch.
8. Watch your hipline fit.
9. Be sure and bring darts out to a point. Sew 2 or 3 stitches past dart end and tie off.
10. Try to eliminate extra bulk in your garments.
11. If you have trouble with your stitching, put masking tape on material to follow for seam lines.
12. During your first years of sewing, even though an older 4-H'er, it is sometimes best to only tackle one and two piece outfits and do a real neat job rather than to try to do 3-4 piece outfits.
13. For tailoring projects, it is strongly advised to use wool and wool blends.
14. Permanent care labels on finished garments are suggested.
15. Stitch in ditch in elastic.
16. Be sure all seams have a finish if you use material that frays or ravel.

**Please note: Knitted and crocheted garments to be worn will be modeled during the Clothing Show Dress Revue. They will need to be brought back to the to the General Show to be judged.**

# FOOD SHOW COUNTRY Financial Hall Monday, June 24, 2024



Registration will begin promptly at 5:00 p.m. All members should be at the COUNTRY Financial Hall as soon after 5:00 p.m. as possible to receive their exhibit tags. Registration will close at 5:30 p.m. Any late entry will automatically take a cut in rating.

Each boy and girl, with his or her food exhibits, will report before a judge when their particular project area is being judged. (The order of projects will be made known later.) Judges will judge each food project and give comments to the individual 4-H'ers. Parents may listen. Exhibits will be put on display after judging unless they are perishable.

Food and Nutrition Education Displays: Perishable foods may not be included in the display. 4-H'ers may use food models (commercially purchased or made by the individual), pictures from magazines, etc. Non-perishable items, such as sealed canned products, may be used. Food displays should have no commercial names visible on products used. **Note Food Project Members will not be required to complete the activity at the county level judging, but State Fair delegates will be required to complete the activity to compete at the State Fair General Project Show, on August 11.**

## EXHIBIT REQUIREMENTS

**ALL PROJECT PLANNING GUIDES MUST BE UP TO DATE AND BROUGHT TO THE SHOW WITH THE PROJECT. RECORDS MUST BE CHECKED BEFORE PROJECT IS SHOWN.**

### 4-H Cooking 101: (SF 50200A, 50200B, 50200C)

Using the recipes included in the project manual (*which are also available at [go.illinois.edu/Cooking101Recipes](http://go.illinois.edu/Cooking101Recipes)*), prepare an exhibit for **one** of the classes below. No icing should be on any products. **No ingredient additions or substitutions should be made to the recipes**, unless they are to accommodate food allergies, sensitivities, or special diets (i.e. nut allergy, gluten intolerance, vegetarian/vegan diet, etc.). If you make changes to the recipe due to the reasons listed above, bring a copy of the recipe with your changes and be prepared to discuss them with the judge. Bars, coffee-cake, or cookies should be displayed on a disposable plate placed in a zip-sealing plastic bag. In addition to your food exhibit, complete the *What's on Your Plate?* Activity on pages 10-11 in the 4-H Cooking 101 project manual (*and for download at [go.illinois.edu/Cooking101Activity](http://go.illinois.edu/Cooking101Activity)*). Bring a document with printed pictures of your 3 or more plates and the answers to questions 1-7 to remain on display with your project. The words on the plates must be legible and clearly visible in the picture. Pictures, graphics or photos are acceptable. Due to space limitations at State Fair, the size of the activity document should be no larger than an 8 ½" x 11" binder or folder.

**Cereal Bars** (SF 50200A) - 3 cereal marshmallow bars

**Coffeecake** (SF 50200B) - 1/4 of 8" square or round coffeecake

**Cookies** (SF 50200C) -3 cookies

*Youth interested in exhibiting a food item from the project book not listed above, making changes to the provided recipes, or exhibiting a display related to information in the project manual should investigate the Foods Innovation class.*

#### **4-H Cooking 201** (SF 50201a, 50201b, 50201c)

Using the recipes included in the project manual (*which are also available at [go.illinois.edu/Cooking201Recipes](http://go.illinois.edu/Cooking201Recipes)*), prepare an exhibit for **one** of the classes below. **No ingredient additions or substitutions should be made to the recipes**, unless they are to accommodate food allergies, sensitivities, or special diets (i.e. nut allergy, gluten intolerance, vegetarian/vegan diet, etc.). If you make changes to the recipe due to the reasons listed above, bring a copy of the recipe with your changes and be prepared to discuss them with the judge. Bread, biscuits, or scones should be displayed on a disposable plate placed in a zip-sealing plastic bag. In addition to your food exhibit, complete Experiment with Meal Planning Activity on page 91 in the 4-H Cooking 201 project manual (*and for download at [go.illinois.edu/Cooking201Activity](http://go.illinois.edu/Cooking201Activity)*). Bring either page 91 with your completed answers or a document with the answers to remain on display with your project along with a picture of the meal you prepared. You do not need to complete the Challenge Yourself section on page 91. Due to space limitations at State Fair, the size of the activity document should be no larger than an 8 ½" x 11" binder or folder.

**Biscuits** (SF 50201a) - 3 rolled biscuits

**Scones** (SF 50201b) - 3 scones

**Nut Bread** (SF 50201c) - ½ loaf (9" x 5") of basic nut bread (no variations)

*Youth interested in exhibiting a food item from the project book not listed above, making changes to the provided recipes, or exhibiting a display related to information in the project manual should investigate the Foods Innovation class*

#### **4-H Cooking 301:** (SF 50202A, 50202B, 50202C, 50202D, 50202E)

Using the recipes included in the project manual (*which are also available at [go.illinois.edu/Cooking301Recipes](http://go.illinois.edu/Cooking301Recipes)*), prepare an exhibit for **one** of the classes below. If icing is used on the tea ring or sweet rolls, the recipe for the icing must also come from the book. The yeast bread/roll dough may be prepared in a bread making machine; however prepared mixes are not permitted. **No ingredient additions or substitutions should be made to the recipes**, unless they are to accommodate food allergies, sensitivities, or special diets (i.e. nut allergy, gluten intolerance, vegetarian/vegan diet, etc.). If you make changes to the recipe due to the reasons listed above, bring a copy of the recipe with your changes and be prepared to discuss them with the judge. Display exhibit on a disposable plate or pie tin and place in a zip-sealing plastic bag. In addition to your food exhibit, complete one of the six experiments: Experiment with Flour p. 33-34, Experiment with Kneading p. 35-36, Experiment with Yeast p. 37-38 or 39, Experiment with Butter p. 62-63 or Experiment with Cheese p. 104-105. Copies of all experiments are available to download at [go.illinois.edu/Cooking301Experiments](http://go.illinois.edu/Cooking301Experiments). Bring a document with a printed picture of your experiment and the answers to the experiment questions to remain on display with your project. Due to space limitations at State Fair, the size of the experiment document should be no larger than an 8 ½" x 11" binder or folder

**Dinner Rolls** (50202a) - 3 dinner rolls

**Yeast Bread** (50202b) - loaf of yeast bread

**Tea Ring** (50202c) - 1 tea ring

**Sweet Rolls** (50202d) - 3 basic sweet dough rolls

**Cake** (50202e) - one layer of a rich white cake or rich chocolate cake, top side up (*without frosting*)

#### **4-H Cooking 401 (SF 50203a, 50203b, 50203c, 50203d)**

Using the recipes included in the project manual (*which are also available at [go.illinois.edu/Cooking401Recipes](http://go.illinois.edu/Cooking401Recipes)*), prepare an exhibit for **one** of the classes below. **No ingredient additions or substitutions should be made to the recipes**, unless they are to accommodate food allergies, sensitivities, or special diets (i.e. nut allergy, gluten intolerance, vegetarian/vegan diet, etc.). If you make changes to the recipe due to the reasons listed above, bring a copy of the recipe with your changes and be prepared to discuss them with the judge. Display exhibit on a disposable plate and place in a zip-sealing plastic bag. In addition to your food exhibit, pick one of the recipes from Cooking 401 that is not a choice for exhibit. Make the recipe and take a picture of the results. Bring a document with a printed picture of the food you made from the recipe and the answers to the following two questions: 1.) If you made this recipe again, what would you do differently? 2.) What did you learn that can help you in other ways besides preparing food? Due to space limitations at State Fair, the size of the activity document should be no larger than an 8  $\frac{1}{2}$ " x 11" binder or folder.

**Focaccia Bread (50203a)** -  $\frac{1}{4}$  of a 15" x 10" loaf of focaccia bread (do not include dipping oil)

**Pie Shell (50203b)** - one baked pie shell - traditional, oil, or whole wheat (no graham cracker)

**Sponge Cake (50203c)** -  $\frac{1}{4}$  golden sponge cake, top side up, without frosting

**French Bread (50203d)** -  $\frac{1}{2}$  loaf French bread

*Youth interested in exhibiting a food item from the project book not listed above, making changes to the provided recipes, or exhibiting a display related to information in the project manual should investigate the Foods Innovation class.*

#### **Food Science 1-4 (SF 50204)**

Prepare a display, digital presentation, or poster on one of the food science experiments from the manual that you completed. Share 1) the food science question you investigated; 2) process used to conduct the experiment; 3) results and observations; 4) what you learned; and 5) how you have applied this information. You must furnish any equipment you need for the exhibit. Internet service is not provided. All exhibits must include something visual, such as a printed copy of a digital presentation. Electronic equipment will only be used during your judging time and will not remain on display during the exhibit period.

#### **Sports Nutrition (SF 50206)**

Prepare a display, digital presentation, or poster on one of the activity chapters in the manual that you completed. The activity chapters are listed by page number in the table of contents. Your exhibit should include, at minimum, information on one physical fitness component and one food/recipe component from the activity chapter. The exhibit should include the project manual with the pages of the activity completed. You may also include live demonstration of physical activities. Do not bring food made using the recipes, but consider adding pictures of the completed recipes to your exhibit. You must furnish any equipment you need for the exhibit. Internet service is not provided. All exhibits must include something visual, such as a printed copy of a digital presentation. Electronic equipment will only be used during your judging time and will not remain on display during the exhibit period.

Examples for Activity 1

Example A: Make a video of yourself practicing flexibility, strength and endurance physical fitness activities and making pasta salad with different vegetable, pasta and dressing ideas. Bring a screen shot and brief description of your video to leave on display.

Example B: Make a poster of pictures of flexibility, strength and endurance physical fitness activities and information on the results of making the spinach and mandarin orange salad. Include answers to the questions in the book.

**Food Preservation (SF 50208A, 50208B, 50208C, 50208D, 50208E, 50208F)**

Prepare an exhibit using ONE of the following food preservation methods: canning; freezing; drying; pickles/relishes; jams, jellies and preserves **OR** a combination of these (see Preservation Combination option below), excluding Freezing. **No freezer jam exhibits will be allowed for Freezing; Jams, Jellies, and Preserves; or for the Preservation Combination options.** Be sure to review all of the Food Preservation rules that follow the class list so you can follow all exhibit requirements.

**Fruits/Vegetables** (SF 50208A) - The exhibit should include two different canned foods in appropriate jars for the products. Food may be fruit, vegetable, or tomato product (i.e. salsa, juice, etc.).

**Freezing** (SF 50208B) - Prepare a nutrition display that illustrates a freezing principle. There is NOT a food exhibit option for this preservation method.

**Drying** (SF 50208C) - Exhibit two (2) different dried foods packed in plastic food storage bags. Choose from fruit, vegetable, fruit leather or meat jerky.

**Pickles and Relishes** (SF 50208D) - Exhibit two (2) pint jars of different recipes of pickles and/or relishes made from produce.

**Jams, Jellies, and Preserves** (SF 50208E) - Exhibit two (2) half-pint jars of two different jams, jellies, and/or preserves.

**Preservation Combination** (SF 50208F) -Exhibit two (2) different preserved food products from two different categories above, excluding Freezing, in appropriate jars/packageaging (Drying). For example, exhibit 1 jar of tomatoes (Fruits/Vegetables) and 1 half-pint of jelly (Jams, Jellies, and Preserves).

All preserved products should be prepared and processed according to the current USDA/Extension information. USDA information on preserving food, including recipes, can be found at: [www.homefoodpreservation.com](http://www.homefoodpreservation.com) or <https://extension.illinois.edu/food/food-preservation>. Recipes must be processed in a water-bath or pressure canner. **Per the 4-H general show rules, entries must be produced (preserved) this 4-H year (between September 1, 2023 and August 31, 2024).**

**All food preservation exhibits must be labeled with:** 1) The name of the food; 2) The date preserved; 3) Appropriate method(s) of food preservation (For canned projects: boiling water bath or pressure canner; For drying projects: Specify equipment used (food dehydrator, oven, etc.)).

**Examples:**

- Strawberry jam, boiling water bath. July 13, 2024.
- Green beans, pressure canner. July 13, 2024.
- Beef jerky, food dehydrator and oven. July 13, 2024.

**All food preservation exhibits must be accompanied with the recipe(s)** - typed or written, with the source of the recipe(s) listed. **Required recipes and sources for food preservation exhibits**

- all food preservation recipes must be from an approved source. Those sources are:

*PUT IT UP! Food Preservation for Youth* website or manuals

National 4-H Home Food Preservation Project Manuals

U.S. Department of Agriculture (USDA)

National Center for Home Food Preservation

Ball/Kerr Canning (recipes after 1985)

Mrs. Wages

**DO NOT BRING RECIPES FROM:** Magazine or newspaper clippings, Pinterest (unless it is from a source listed above), a recipe from a family member or friend without a source, cookbooks (excluding the Ball, Kerr, Put It Up!, and 4-H Home Food Preservation books).

**Canning Equipment Requirements:** All canned products must be canned in clear, standard jars in good condition (no chips or cracks). Jars must be sealed using two-piece canning lids (flat lid and band). Must use a new, unused flat lid. Bands must not be rusty or severely worn.

**Foods Innovation Class (SF 50211)**

**Open to youth enrolled in any Foods project.**

Demonstrate the skills and knowledge you have gained through the project. The exhibit may include, but isn't limited to, original recipes, results of experiments not in the foods project books, variations on recipes or experimenting with unique cooking or baking methods. Your work can be displayed by a food product, demonstrations, digital presentations, performances, or posters which you have made. Choose whatever method best shows what you've learned. Your exhibit should not fit in the other exhibit options for this project. You must furnish any equipment you need for your exhibit. Internet service will not be provided for the exhibit. All exhibits must include something visual, such as a printed copy of a digital presentation, which will remain on display during the exhibition. Electronic equipment will only be used during your personal judging time and will not remain on display during the entire exhibit period. If you bring a food product, the food will NOT be tasted.

**\*\*\*All Food Demonstrations are to be done at Speeches & Demonstrations\*\*\***

(not eligible for state fair)

**FOOD DEMONSTRATIONS** - Food demonstrations should be approximately 8-10 minutes in length, however there will not be a time penalty. The time limit will be taken into consideration at the judges' discretion. Demonstrations may be done by an individual or team of two members. Exhibitors are responsible for furnishing all equipment and supplies. A stove, refrigerator and demonstration table will be available for the demonstrator's use. (A microwave is **not** available.) Each exhibitor is responsible for setting up his/her own demonstration area. The food demonstration must relate to the state-offered project area in which the member(s) is/are enrolled. Refer to the ***Illinois 4-H Foods Demonstration Guide*** found on the Illinois 4-H web site.



**GENERAL SHOW**  
**COUNTRY Financial Hall**  
**Saturday, July 13, 2024**

General Show projects will be shown by club. Each club will have a time period to attend with their projects to be judged, they will leave their judged projects. Judging will be started at 8:00 a.m. Members will need to be there by 7:30 to register your project if you are the first club. OR you will have the option to register on Friday evening from 5:00-6:00 p.m. Judging will be complete at 12:00 noon. From 12:00-1:00 p.m. will be public viewing. At 1:00 p.m. awards, pictures and project pick-up will be held.

All Displays should fit into an area no larger than 2' wide x 15 " deep. Posters should be no larger than 22" x 30". Use these measurements unless otherwise stated.

### EXHIBIT REQUIREMENTS

ALL PROJECT RECORDS MUST BE UP TO DATE AND BROUGHT TO THE SHOW WITH EACH PROJECT. Records must be checked before project is shown. All projects not listed shall display record book. All 4-H members should plan to be present by his or her project while it is being judged. Any late entry will automatically take a cut in rating.

### AEROSPACE

#### **Model Rocketry : (SF 50130)**

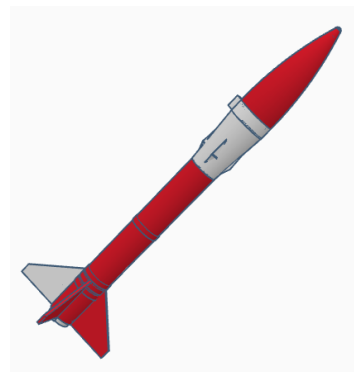
#### **Open to youth in Aerospace 1, Aerospace 2, Aerospace 3, and Aerospace 4**

Exhibit one model rocket assembled or made by the member. The exhibit will be a static display. The model rocket should be in good flying condition. DO NOT include the rocket engine with your exhibit. The rocket will not be launched. Attach the printed directions for construction of the rocket if any were used.

#### **Aerospace Display: (SF 50131)**

#### **Open to youth in Aerospace 1, Aerospace 2, Aerospace 3, and Aerospace 4**

Prepare a display related to the aerospace project which does not fit in the model rocketry class. The exhibit may include, but isn't limited to, original works, objects, demonstrations, digital presentations, programs, websites, games, apps, performances, or posters which you have made. Choose whatever method best shows what you've learned. You must furnish any equipment you need for your exhibit. Internet service will not be provided for the exhibit. All exhibits must include something visual, such as a printed copy of a digital presentation, which will remain on display during the exhibition. Electronic equipment will only be used during your personal judging time and will not remain on display during the entire exhibit period.



## ANIMAL SCIENCE

### Animal Science 1 (SF 50135A)

**For youth enrolled in this project 1-2 years.**

Prepare a display focusing on any activity related to your animal project. Demonstrate the skills and knowledge you have gained through the animal project you studied. The exhibit may include, but isn't limited to, original works, objects, demonstrations, digital presentations, programs, websites, games, apps, performances, or posters which you have made. Choose whatever method best shows what you've learned. You must furnish any equipment you need for your exhibit. Internet service will not be provided for the exhibit. All exhibits must include something visual, such as a printed copy of a digital presentation, which will remain on display during the exhibition. Electronic equipment will only be used during your personal judging time and will not remain on display during the entire exhibit period. Live animals are not permitted as exhibits in this area. For safety reasons, exhibits cannot include glass, syringes with needles or any other sharp objects.

### Animal Science 2 (SF 50135B)

**For youth enrolled in this project 3 or more years.**

Prepare a display focusing on any activity related to your animal project. Demonstrate the skills and knowledge you have gained through the animal project you studied. The exhibit may include, but isn't limited to, original works, objects, demonstrations, digital presentations, programs, websites, games, apps, performances, or posters which you have made. Choose whatever method best shows what you've learned. You must furnish any equipment you need for your exhibit. Internet service will not be provided for the exhibit. All exhibits must include something visual, such as a printed copy of a digital presentation, which will remain on display during the exhibition. Electronic equipment will only be used during your personal judging time and will not remain on display during the entire exhibit period. Live animals are not permitted as exhibits in this area. For safety reasons, exhibits cannot include glass, syringes with needles or any other sharp objects.



## BICYCLE (not eligible for state fair)

### Bicycle 1

Exhibitors will draw three situations from a bag that relate to activities from Level 1 and discuss/explain all three with the judge. Situations may include: selecting bicycle safety equipment; demonstrate how to fit a helmet; identify bike parts and their function; selecting the right size bike; how to check bicycle tires, brakes and chains; recognizing traffic signs and their meaning; general discussion of bicycling hazards; and items to consider when planning a bike trip.

### Bicycle 2 (not eligible for state fair)

Exhibitors will draw three situations from a bag that relate to activities from Level 2 and discuss/explain all three with the judge. Situations may include: factors to consider when choosing a bike; comparing tire pressure, valve type and tread; steps in fixing a flat tire; steps to follow when cleaning, lubricating and replacing a bike chain; evaluating the braking system on a bicycle; factors to consider when mapping out a bike route; rules for smart bike riding; and planning a menu for an all-day bike ride.

## CHILD DEVELOPMENT

### Child Development (SF 50141)

Prepare a display that demonstrates the skills and knowledge you have gained studying child development. Topics might include, but are not limited to, selecting age-appropriate toys and activities, explaining child behavior, or recognizing child safety concerns. The exhibit may include, but isn't limited to, original works, objects, demonstrations, digital presentations, programs, websites, games, apps, performances, or posters which you have made. Choose whatever method best shows what you've learned. You must furnish any equipment you need for your exhibit. Internet service will not be provided for the exhibit. All exhibits must include something visual, such as a printed copy of a digital presentation, which will remain on display during the exhibition. Electronic equipment will only be used during your personal judging time and will not remain on display during the entire exhibit period. For safety reasons, exhibits cannot include glass, syringes with needles or any other sharp objects.

## CIVIC ENGAGEMENT

**Due to space restrictions, exhibits are limited to 2'6" wide and 15" deep.**

### Civic Engagement 1: (SF 50145)

Exhibit a display illustrating one of the following options: 1) personal information about yourself - who you are, things you like to do, things you are good at, your favorites; 2) your feelings and how you handle these feelings; 3) your family, their responsibilities, how you work together; **OR** 4) the Family Pedigree that may include family group pages. **Due to space restrictions, exhibits are limited to 2'6" wide and 15" deep.**

### Civic Engagement 2: (SF 50146)

Exhibit a display illustrating one of the following options: 1) your neighborhood; 2) how you were a good neighbor or led a service project for your community; **OR** 3) a Citizenship Challenge that you helped organize and lead (see the project book for details). **Due to space restrictions, exhibits are limited to 2'6" wide and 15" deep.**

### Civic Engagement 3: (SF 50147)

Exhibit a display illustrating one of the activities that you completed within your project as it relates to one of the following categories in the manual: 1) Government; 2) Business and Industry; 3) Transportation, Communication & Utilities; 4) Culture & Heritage; 5) Natural Resources & Environment; 6) Education; 7) Organizations within your community; 8) Tourism; **OR** 9) Support Systems within your community. **Due to space restrictions, exhibits are limited to 2'6" wide and 15" deep.**



## **Civic Engagement Group Exhibit (SF 50148)**

### **Open to clubs and groups whose members are enrolled in any Civic Engagement project**

Exhibit a display illustrating how your group led a service project in your community. The exhibit may include, but isn't limited to, original works, objects, demonstrations, digital presentations, programs, websites, games, apps, performances, or posters which you have made. Choose whatever method best shows what you've learned. You must furnish any equipment you need for your exhibit. Internet service will not be provided for the exhibit. All exhibits must include something visual, such as a printed copy of a digital presentation, which will remain on display during the exhibition. Electronic equipment will only be used during your personal judging time and will not remain on display during the entire exhibit period. The display must be accompanied by 3 or more 4-H members at the time of the judge's critique. Club members should make a 5- to 10-minute presentation to the judge. All club members present for the judge's critique should be able to discuss the project and answer questions. Only club members present for judging who participate in the actual critique and presentation are eligible for ribbons and premiums. Cloverbuds are not eligible for state fair and cannot be promoted and participate in a group presentation at state fair. **Due to space limitations, exhibits are limited to 2'6" wide and 15" deep.**

## **COLLEGE & CAREER READINESS**

### **Build Your Future: (SF 50365)**

Develop a Career portfolio which includes the items listed below. Members are encouraged to spend more than one year involved in this project so they have time to thoroughly explore the learning modules and develop a greater understanding of planning and preparing for their future and develop a comprehensive career planning portfolio. The original OR photocopies of the completed activities from the project manual should be included in the portfolio. Each year enrolled in the project should build on previous year's learning experiences.

- **First Year** - Complete a minimum of Activities 1-4 from the Build Your Future project manual which includes: Skills...Choices...Careers; Making Career Connections; Build Your Future Through Portfolios; and Education Pay\$.
- **Second Year** - Complete a minimum of Activities 5-7 from the Build Your Future project manual which includes: Career FUNds; Turn Your 4-H Passion Into Profit; and Pounding the Pavement.
- **Third Year** - Complete a minimum of Activities 8-9 from the Build Your Future project manual which includes: Putting the Pieces Together; Goals for the Future; and Pathways to Success.

## **COMMUNICATIONS**

### **Communications 1, 2, 3 (SF 50368)**

For 1<sup>st</sup> year enrolled in project: Exhibit a binder portfolio showcasing at least three activities from the project manual. Show basic activities and anything that extended lessons. For 2<sup>nd</sup> and 3<sup>rd</sup> years in project: Include everything from earlier years' work and add a section showcasing at least four additional activities per year.

### **Journalism, News & Social Media (SF 50369)**

Exhibit a binder portfolio showing the results of the appropriate year's activities noted below:

- **Year 1:** Accomplishments of a minimum of 5, 2-star activities from Part 1, answering all of the questions in the activities.
- **Year 2:** Results of doing a minimum of 5, 2-star activities in Part 2, answering all the questions in the activities.
- **Year 3:** Results of doing a minimum of 5, 3-star activities from Parts 1 and 2. One of the activities must include writing an advance story, a follow-up story, or a feature story.
- **Year 4:** Results of doing at least 2, 2-star activities and 3, 3-star activities from Part 3. If the activities include making an audio or videotape, State Fair will provide a way for the judge to view or listen to it.

### **Follow the instructions below to submit your entry.**

1. Members are strongly encouraged to upload their submission to the State Communications Box folder at least two days prior to the beginning of State Fair. Members need to include their name and county in the title of the file. Upload files to: <https://go.illinois.edu/StateFairSubmissions>.
2. Members are also required to bring hard copy of their project to drop off the morning that their county is exhibiting at the state fair.

## COMMUNICATIONS: PUBLIC SPEAKING

Counties may advance a total of 3 entries from any category to the state contest. A 4-H member may advance in one individual category and one team category. **Participating Youth must be 8 years of age on or before September 1, 2023. Participating youth turning 14 years of age on or before September 1, 2023 must enroll as advanced.** Enrollment in the Public Presentations project is required to participate in this section. No live animals are allowed in speeches.

### Resources:

Youth Looking for resources to help prepare for this contest can reference the following:  
[Finding your Voice: Public Speaking made Easy](#) (Public Speaking)

### Formal Speech

**Self-written | Notes Allowed | No props | Individual | 4-5 minutes for beginners; 5-6 minutes for advanced**

Formal Speech - Original Beginner Ages 8-13 (SF 50501A)

Formal Speech - Original Advanced Ages 14 & Up (SF 50501B)

Formal Speeches share the presenter's own unique view and are intended to motivate, persuade, or inform an audience and may include a call to action. Youth deliver a speech on any topic they wish.

### Illustrated Speech

**Self-written | Notes Allowed | Illustrations Required | Individual | 4-5 minutes for beginners; 5-6 minutes for advanced**

Illustrated Speech - Beginner Ages 8-13 (SF 50503A)

Illustrated Speech - Advanced Ages 14 & Up (SF 50503B)

Illustrated Speeches may be used to inform, persuade, or motivate the audience while using a visual aid. Visual aids may be two dimensional, three-dimensional, or digital. Youth may include audience participation. Digital visual aids must be stored on a USB flash drive. Illustrated speeches may be:

- How-to-demonstrations which show the audience how to do something.
- Object lessons which use objects as metaphors to share a message.
- Educational models where drawings or diagrams help explain a topic.

### Original Works

**Self-written | Notes Allowed | Props and Costumes Allowed | Individual or 2-Person Team | Youth must provide manuscripts to judge | 4-6 minutes**

Original Works - Individual (SF 50504)

Original Works - Team (SF 50505)

**Original works must be written entirely by the presenter.** It may be presented as an individual or a two-person team entry. Manuscripts must be sent in advance to the contest. Presentations may be designed for TV, radio, or online media and must be presented live. The types of entries could include:

- Prose and Short Stories
- Poetry/Spoken Word
- Broadcast Media Program
- Theatrical
- Combined Program: Combine any number of the above elements along with other creative presentation forms

### Oral Interpretation

**Published Work | Props and Costumes Allowed | Individual or 2-Person Team | Youth must provide manuscripts to judge | 4-6 minutes**

Oral Interpretation - Individual (SF 50506)

Oral Interpretation - Team (SF 50507)

**Presentations in Oral Interpretation must be published works, and manuscripts or transcripts must be submitted prior to the event.** They may be presented as an individual or a two-person team entry. The types of entries could include:

- Prose and Short Stories
- Poetry
- Theatrical Interpretation
- Published Speech Recitation: Excerpt from a spoken presentation delivered by a public figure, such as Winston Churchill, Dr. Martin Luther King, Jr., or Maya Angelou
- Combined Program: Combine any number of the above elements along with other creative presentation forms

### **Demonstrations—(not eligible for state fair)**

Demonstrations may pertain to any topic. Demonstrations may be given by an individual or a team of two members. Exhibitors are responsible for furnishing all equipment and supplies needed. Demonstrations must be 8-10 minutes in length.

### **COMMUNITY SERVICE**

**Due to space restrictions, exhibits are limited to 2' 6" wide and 15" deep.**

#### **Service Learning 1 (SF 50150a)**

Exhibit a binder portfolio to reflect what the exhibitor accomplished in the four steps of service learning. This should include researching the need of the community and steps taken to serve that need. If exhibitor has been enrolled in project for multiple years, the binder portfolio should include previous years' work. Use of page protectors is recommended. A display board may accompany the portfolio, exhibits are limited to 2'6" wide and 15" deep

#### **Service Learning 2 (SF 50150b)**

Exhibit a binder portfolio to reflect what the exhibitor accomplished in the four steps of service learning. This should include a walk-about to observe needs, assessment of needs and assets in your community, surveys/interviews conducted to identify needs and the solution. If exhibitor has been enrolled in project for multiple years (including Service Learning 1), the binder portfolio should include previous years' work. Use of page protectors is recommended. A display board may accompany the portfolio, exhibits are limited to 2'6" wide and 15" deep.

#### **Service Learning Group Exhibit (SF 50149)**

**Open to clubs and groups whose members are enrolled in any SERVICE LEARNING project.**

Due to space limitations, exhibits are limited to 2'6" wide and 15" deep.

Club members should be enrolled in Service Learning - Agents of Change (Level 1) and/or Raise Your Voice (Level 2). Register community project at <https://4h.extension.illinois.edu/participate/4-h-community-service>, additional resources located on site. Exhibit should be educational in nature and should inform others of steps taken to engage club members in 1) identifying a local need, conducting a local needs assessment to find a need that is already visible in the community; 2) determine types of activities club members can/want to do; 3) List all of the activities, projects, or needs identified to review with club members; 4) create a plan and timeline for completing the service project (including-project goals; tasks involved; time commitment; permission needed from community stakeholders; a budget, a source for securing those funds; insurance needs; equipment and supplies; publicity; potential partners if additional help is needed; a risk management plan; and a process for evaluating the project; 5) prepare for club members to engage in the service project which may include instruction on completing specific tasks and/or educating members on how the project will benefit the community; 6) complete the project; 7) documentation of service experience with photos, videos; or written reports; 8) once project is completed, reflect on success and/or challenges encountered during execution of the service project; consider what you might do differently in future service projects. Create a display which will educate the public regarding the impact of the service project for both the community and the club members. The display should be staffed by 3 or more club members at the time of judging. Club members should make a 5-10 minute presentation for the judge. Club members should create a display which showcases the service project and the steps needed to complete it. Only club members present for the judging and who participate in the critique and presentation are eligible for ribbons and premiums. Exhibit size should not exceed 2' x 16" WIDE AND 15" deep.



## COMPUTER SCIENCE

Exhibitors may bring computer equipment for demonstration purposes. Computers will not be furnished. Internet connections are not available for use by exhibitors. Any member found to be using computer software in a manner that infringes on copyright laws will be disqualified.

### **Beginning Visual Programming (SF50158)**

#### **Open to youth in Computer Science Visual Based Programming**

Exhibit a simple program using Scratch (or other simple visual programming language). The program should include 8 different commands including looping and getting input from the keyboard and mouse. All exhibits must include something visual, such as a poster or printed copy of a digital presentation, which will remain on display during the exhibition. Electronic equipment will only be used during your personal judging time and will not remain on display during the entire exhibit period.

### **Intermediate Visual Programming (SF 50159)**

#### **Open to youth in Computer Science Visual Based Programming**

Exhibit a program using Scratch (or other simple visual programming language) that you have downloaded from the internet and modified. Compare the two programs and demonstrate the changes you made to the original program; **OR** create an animated storybook using Scratch (or other simple graphical programming language). All exhibits must include something visual, such as a poster or printed copy of a digital presentation, which will remain on display during the exhibition. Electronic equipment will only be used during your personal judging time and will not remain on display during the entire exhibit period.

### **Advance Visual Programming (SF 50160)**

#### **Open to youth in Computer Science Visual Based Programming**

Exhibit a video game you have created in Scratch (or other simple visual programming language). All exhibits must include something visual, such as a poster or printed copy of a digital presentation, which will remain on display during the exhibition. Electronic equipment will only be used during your personal judging time and will not remain on display during the entire exhibit period.

### **Website Design (SF 50161)**

#### **Open to youth in any Computer Science Project Area**

Exhibit an original website that you have designed using a programming language such as HTML (cannot be made with website builder like Wix or Squarespace). Internet access will not be provided, so exhibitors must supply their own internet hot spot, or the website must be hosted on the exhibitor's computer. All exhibits must include something visual, such as a poster or printed copy of a digital presentation, which will remain on display during the exhibition. Electronic equipment will only be used during your personal judging time and will not remain on display during the entire exhibit period.

### **Text Based/Open Source Computer Science (SF 50162)**

**Open to youth enrolled in any Computer Science or robotics project** Demonstrate the skills and knowledge you have gained through the Computer Science project using a text-based programming language (Python, Java, C, etc.). The exhibit may include, but isn't limited to, original works, objects, demonstrations, digital presentations, programs, websites, games, apps, performances, or posters which you have made. Choose whatever method best shows what you've learned. Your exhibit should not fit in the other exhibit options for this project. You must furnish any equipment you need for your exhibit. Internet service will not be provided for the exhibit. Exhibits in this class may also demonstrate successful application of open source (publicly available) computing software and/or hardware, such as Raspberry Pi and Linux, to accomplish a task. All exhibits must include something visual, such as a poster or printed copy of a digital presentation or programming flowchart, which will remain on display during the exhibition. Exhibits in this area will be judged on the computer science programming. Electronic equipment will only be used during your personal judging time and will not remain on display during the entire exhibit period. Exhibits in this class must be able to fit on no more than a 3' x 2' space (or ground footprint).

## CONSUMER EDUCATION

### **Entrepreneurship: Be the E!** (SF50166)

Exhibit a binder portfolio or display that includes the results of at least two completed activities from each year the exhibitor has been enrolled in the project. Completed activities from previous years should be included.

### **My Financial Future 1 Beginner** (SF 50168)

Develop a Financial Planning portfolio which includes the items listed below. This project can be completed all in one year; or a member may take several years to explore each of the activities and develop a more detailed financial plan. The original OR photocopies of the completed activities from the project manual should be included in the portfolio.

Each year enrolled in the project should build on previous year experiences.

- **First Year** - Complete a minimum of Activities 1-6 from the My Financial Future - Beginner project manual which includes: Who Needs This?; Let's get SMART; Bringing Home the Bacon; Managing Your Money Flow; My Money Personality; and Money Decisions.
- **Second Year and Beyond** - Complete a minimum of Activities 7-11 from the My Financial Future - Beginner project manual which includes: Banking your \$\$\$\$; Charging it Up; Check it Out; Better than a Piggy Bank! and My Work; My Future.

### **My Financial Future 2 Advanced** (SF 50169)

Building on your previous work in My Financial Future - Beginner project, continue adding to your Financial Planning portfolio which includes the items listed below. Members are encouraged to spend more than one year involved in this project, so they have time to thoroughly explore the learning modules and develop a greater understanding of financial literacy, planning for their future, and develop a comprehensive career and financial planning portfolio. The original OR photocopies of the completed activities from the project manual should be included in the portfolio. Each year enrolled in the project should build on previous year's learning experiences.

- **First Year** - Complete a minimum of two activities from Module 1: Earning Income and Career Planning and Module 2: Organizing Your Flow.
- **Second Year** - Complete all activities not previously completed in Module 1: Earning Income and Career Planning and Module 2: Organizing Your Flow; **AND** a minimum of two of the activities from Module 3: Working with Banks and Credit Unions: Bank on It and Module 4: Making Your \$ Work 4 U.
- **Third Year and Beyond** - Complete all activities not previously completed in Module 3: Working with Banks and Credit Unions: Bank on It and Module 4: Making Your \$ Work 4 U; **AND** a minimum of two activities from Module 5: Credit and Consumer Breadcrumbs.





## CREATIVE WRITING

### Creative Writing (SF 50367)

Submit one of the following. The entry is to be typewritten on 8 ½ x 11 paper and include exhibitor's name. Entries must be original and **written for the 4-H project**. Stories should be double-spaced. **A copy needs to be submitted 3 days prior to the General Show**

- **Short Story** - A fiction piece comprised of three basic elements: a theme, a plot and characters. Submit one story, maximum length - 2,000 words.
- **Essay** - A short nonfiction composition in which a theme is developed, or an idea is expressed. Submit one essay, maximum length - 500 words.
- **Feature Story** - Nonfiction human-interest story judged on interest to readers, writing style, readability, and thoroughness of coverage. Submit one story, maximum length - 1,000 words.

**State Level Creative Writing: If promoted to state, follow the instructions below to submit your entry by August 1 to the state 4-H office.**

2. Members are strongly encouraged to upload their submission to the State Communications Box folder by August 1, prior to the beginning of State Fair. Members need to include their name and county in the title of the file. Upload files to: <https://go.illinois.edu/StateFairSubmissions>

3. Members are also required to bring a hard copy of their project to drop off the morning that their county is exhibiting at the state fair.

### Poetry (SF 50371)

Submit one of the following. The entry is to be typewritten on 8 ½ x 11 paper and include exhibitor's name. Entries must be original and **written for the 4-H project**. Poems may be single-spaced. The entries should be submitted by August 1 to the state 4-H office.

- **Rhymed Poetry** - An interpretation of a subject in rhymed verse. Submit a collection of three poems.
- **Free Style Poetry**- An interpretation of a subject in unrhymed verse. Submit a collection of three poems.

## CROPS

### Soybeans (SF 50170)

Exhibit five fresh plants (include root system that is washed) that are representative of member's 4-H project field; **OR** exhibit an experimental or educational project related to one experience from your project. Include explanation of the project in a report for public understanding. Include the member's crop records with the exhibit, such as the 4-H crop record found online at [4-H.illinois.edu](http://4-H.illinois.edu), an FFA crops record, or similar information.

### Corn (SF 50171)

Exhibit two fresh plants of field corn (include root system that is washed) that are representative of member's 4-H project field; **OR** exhibit an experimental or educational project related to one experience from your project. Include explanation of the project in a report for public understanding. *Sweet corn should be exhibited in Vegetable Gardening unless being raised under commercial contract by the exhibitor.* Include the member's crop records with the exhibit, such as the 4-H crop record found online at [4-H.illinois.edu](http://4-H.illinois.edu), an FFA crops record, or similar information.

### **Small Grains (SF 50172)**

Exhibit one gallon of the current year's crop of oats, wheat, rye, or barley that is representative of the member's 4-H project field; **OR** exhibit an experimental or educational project related to one experience from your project. Include explanation of the project in a report for public understanding. Include the member's crop records with the exhibit, such as the 4-H crop record found online at [4-H.illinois.edu](http://4-H.illinois.edu), an FFA crops record, or similar information.

### **Crops Innovation Class (SF 50173)**

#### **Open to youth enrolled in any Crops project**

Demonstrate the skills and knowledge you have gained through the Crops project. This could be related to, but not limited to crop production, crop utilization or topics of interest to the member related to agronomy. The exhibit may include, but isn't limited to, original works, objects, demonstrations, digital presentations, programs, websites, games, apps, performances, or posters which you have made. Choose whatever method best shows what you've learned. Your exhibit should not fit in the other exhibit options for this project. You must furnish any equipment you need for your exhibit. Internet service will not be provided for the exhibit. All exhibits must include something visual, such as a printed copy of a digital presentation, which will remain on display during the exhibition. Electronic equipment will only be used during your personal judging time and will not remain on display during the entire exhibit period

## **DRONES: UNMANNED AERIAL VEHICLES/SYSTEMS**

Choose one of the following classes based on your interest and skill level. Each Exhibitor must complete the first 2 sections, and at least 3 Real World Missions in the Quads Away Curriculum and display a completed Mission Logbook.

### **UAV Display (SF 50375)**

Prepare a display related to the Drones/UAV project on the topic of your choosing. The exhibit may include, but isn't limited to, original works, objects, demonstrations, digital presentations, programs, websites, games, apps, performances, or posters which you have made. Choose whatever method best shows what you've learned. You must furnish any equipment you need for your exhibit. Internet service will not be provided for the exhibit. All exhibits must include something visual, such as a printed copy of a digital presentation, which will remain on display during the exhibition. Electronic equipment will only be used during your personal judging time and will not remain on display during the entire exhibit period. Non-UAV/ Drone projects should not be entered in this class (see Aerospace Display).

### **UAV Unmanned Aerial Systems (SF 50376)**

Exhibit one Unmanned Aerial Vehicle and associated system assembled or made by the member. UAV or Drone exhibits in this class must be either originally designed or built from a kit of reconfigurable parts and components. These displays are limited to multicopters (tri, quad, hex, and octocopters), as well as FPV airplanes and flying wings with wingspans up to 36". A detailed build log with pictures, as well as a Mission Logbook must be included. The UAV **MUST** have a Flight Controller and utilize a camera/video transmission system. The exhibit will be a static display. The Drone should be in good flying condition with batteries fully charged, and all UAS components (including Video System) ready to demonstrate. **DO NOT** display your UAV with the propellers on, but rather on the table to the side of your UAV. The Drone will not be flown. Attach the printed directions/instructions of the UAV if any were used.



## **ELECTRICITY**

### **Electricity 1 (SF 50177)**

(May only be battery-powered projects using battery components and wiring). Exhibit a momentary switch, simple switch, basic circuit, electromagnet, galvanometer, **OR** an electric motor. All projects must include a report explaining how the project was constructed and the principles demonstrated. Recommendations can be found on the website. Projects using paper clips, cardboard, thumbtacks, and brads are not eligible for state fair exhibits in electricity. Members wishing to exhibit these types of projects should consider exhibiting in Junk Drawer Robotics 1 or 2.

### **Electricity 2 (SF 50178)**

(May only be battery-powered projects using battery components and wiring). Exhibit a circuit board demonstrating parallel and series switches, including a circuit diagram; 3-way or 4-way switch circuit using DC/battery; **OR** a basic electrical device (examples: rocket launcher, burglar alarm, etc.). All projects must include a report explaining how the project was constructed and the principles demonstrated. Recommendations can be found on the website. Projects using paper clips, cardboard, thumbtacks, and brads are not eligible for state fair exhibits in electricity. Members wishing to exhibit these types of projects should consider exhibiting in Junk Drawer Robotics 1 or 2.

### **Electricity 3 (SF 50179)**

Exhibit a 120V lighting fixture or other appliance that uses a switch; **OR** two electrical household circuits using 120V materials to comply with National Electrical Code, one with a simple on/off switch to control bulb, and one using 3-way switches to control light from two locations; **OR** other project which demonstrates principles in the *Wired for Power* book. All electricity projects must include a report, explaining how the project was constructed, and principles for its operation. Recommendations can be found on the website.

### **Electricity 4 (SF 50180)**

Exhibit any electronic or solid-state appliance. Exhibitor must be able to explain how the project was constructed, how it is to be used and how it works. When project is being constructed, general safety and workmanship should be considered. All Electricity 4 projects must include a report explaining how the project was constructed, and principles for its operation. Recommendations can be found on the website.

## **ENTOMOLOGY GENERAL**

Size and number of exhibit cases should relate appropriately to the number of insects being displayed for a specified class. Cases should be no deeper than 4". Exhibitors should note that Entomology exhibits may be placed UPRIGHT for display.

### **Entomology 1 (SF 50183)**

Exhibit 15 or more species representing four or more orders. Collection must be accurately labeled. Exhibitors must also include the Entomology 1 project manual, *Teaming With Insects 1*, with at least one completed activity for each year enrolled. Rules for pinning and labeling insects are available at the following site:

<https://extension.entm.purdue.edu/401Book/default.php?page=home>

### **Entomology 2 (SF 50184)**

Exhibit 30 or more species representing eight or more orders. Collection must be accurately labeled. Exhibitors must also include the Entomology 2 project manual, *Teaming With Insects 2*, with at least one completed activity for each year enrolled. Rules for pinning and labeling insects are available at the following site:

<https://extension.entm.purdue.edu/401Book/default.php?page=home>

### **Entomology 3 (SF 50185)**

Exhibit 60 or more species representing twelve or more orders. Collection must be accurately labeled. Exhibitors must also include the Entomology 3 project manual, *Teaming With Insects 3*, with at least one completed activity for each year enrolled. Rules for pinning and labeling insects are available at the following site:

<https://extension.entm.purdue.edu/401Book/default.php?page=home>

### **Entomology Display (SF 50186)**

#### **Open to youth enrolled in Entomology 1, Entomology 2 or Entomology 3**

Exhibit any activity or display related to Entomology that does not fit into Entomology Classes 1, 2 or 3 above. The exhibit may include, but isn't limited to, original works, objects, demonstrations, digital presentations, programs, websites, games, apps, performances, or posters which you have made. Choose whatever method best shows what you've learned. You must furnish any equipment you need for your exhibit. Internet service will not be provided for the exhibit. All exhibits must include something visual, such as a printed copy of a digital presentation, which will remain on display during the exhibition. Electronic equipment will only be used during your personal judging time and will not remain on display during the entire exhibit period.

## **ENTOMOLOGY BEEKEEPING**

Create an exhibit that shows the public what you learned in the beekeeping project this year. **Note:** No beehives may be exhibited. Honey moisture content will be measured. Fill level: the honey should be filled to the jar shoulder, not over, nor under. Chunk honey should go in a wide-mouth jar, preferably one specially made for chunk honey (see beekeeping catalogs). Be careful to distinguish "chunk honey" (comb in jar) from "cut comb" (comb only in plastic box). *Honey exhibited (including chunk, cut comb, and sections) must be collected since the previous year's fair.*

### **Beekeeping 1 (SF 50188)**

Exhibit an educational display for one (1) of the following:

- Flowers used to make honey. Display pressed flowers from ten (10) different Illinois plants that bees use for making honey.
- Uses of honey and beeswax.
- Setting up a beehive.
- Safe handling of bees.
- Equipment needed by a beekeeper.

### **Beekeeping 2 (SF 50189)**

Exhibit one (1) of the following:

- Extracted honey: Three (3) 1# jars (glass, screw-top), holding 1# of honey each.
- Chunk honey (comb in jar): Three (3) 1# jars (wide-mouth, glass).
- Cut-comb honey: Three (3) 1# boxes (boxes are usually 4  $\frac{1}{2}$ " x 4  $\frac{1}{2}$ " in size).
- Section honey: Three (3) sections of comb honey (in basswood boxes or Ross rounds).
- Working with honey bees. Present a topic from your manual to teach fairgoers about working with honey bees. Use your knowledge and creativity to display this information on a poster or in a notebook.

### **Beekeeping 3 (SF 50190)**

Exhibit three (3) of the five (5) kinds of honey listed below (#1-5) or prepare an educational display about honey bees or beekeeping (#6).

1. Extracted honey: Three (3) 1# jars (glass, screw-top), holding 1# of honey each.
2. Chunk honey (comb in a jar): Three (3) 1# jars (wide-mouth, glass).
3. Cut-comb honey: Three (3) 1# boxes (boxes are usually 4 ½" x 4 ½" in size).
4. Comb honey: Three (3) sections (honey built by bees in frames of wood commonly called "sections") (boxes are usually 4 ½" x 4 ½" in size).
5. Section honey: Three (3) sections of comb honey (in basswood boxes or Ross rounds) **OR**
6. Prepare an educational display about honey bees or beekeeping.

## **ESPORTS**

All exhibitors must complete all activities in the Illinois 4-H eSports Pilot Curriculum.

### **eSports (SF 50378)**

Compete in at least 1 ranked tournament online or in person (either as a team or solo), and fully document your progress throughout. Any game with a documentable bracket system, and at least 3 rounds counts. Be sure to include a description of the tournament, your match information, your win-loss record, and description of the game and platform being used to play the game (Ram requirements/capabilities of your machine, video card specs., etc.). Prepare a PowerPoint presentation describing your journey through eSports (including your 1 mandatory tournament), what you have learned about gaming/eSports, and why you think more youth should be involved. Also include a detailed description of your most important win, explaining your strategy in that victory. Be sure to include screenshots and video, if possible. Load your presentation to a USB drive.

## **EXPLORATORY (not eligible for state fair)**

### **Exploratory (Welcome to 4-H) (not eligible for state fair)**

Youth ages 8 - 10 may exhibit a display on one of the following topics from the project book:

- Windowsill gardening; **OR**
- 4-H animals; **OR**
- 4-H family; **OR**
- Coat of arms

### **Collectibles (not eligible for state fair)**

Bring your completed project book and your collection or examples of your collection (if it's too large to bring) with pictures of total collection, **OR** an exhibit or poster illustrating one feature of the project.

## **FAMILY HERITAGE**

### **Family Heritage (SF 50197)**

Prepare an exhibit of items, pictures, maps, charts, slides/tapes, drawings, illustrations, writings or displays that depict the heritage of the member's family or community or 4-H history. Please note: Exhibits are entered at 4-H's own risk. 4-H is not responsible for loss or damage to family heirloom items or any items in this division. Displays should not be larger than 36" x 48" wide. .

## FORESTRY

### **Forests of Fun 1 (SF 50212)**

Exhibit any product or display illustrating an activity from the book. The exhibit may include, but isn't limited to, original works, objects, demonstrations, digital presentations, programs, websites, games, apps, performances, or posters which you have made. Choose whatever method best shows what you've learned. You must furnish any equipment you need for your exhibit. Internet service will not be provided for the exhibit. All exhibits must include something visual, such as a printed copy of a digital presentation, which will remain on display during the exhibition. Electronic equipment will only be used during your personal judging time and will not remain on display during the entire exhibit period.

### **Forests of Fun 2 (SF 50213)**

Exhibit any product or display illustrating an activity from the book. The exhibit may include, but isn't limited to, original works, objects, demonstrations, digital presentations, programs, websites, games, apps, performances, or posters which you have made. Choose whatever method best shows what you've learned. You must furnish any equipment you need for your exhibit. Internet service will not be provided for the exhibit. All exhibits must include something visual, such as a printed copy of a digital presentation, which will remain on display during the exhibition. Electronic equipment will only be used during your personal judging time and will not remain on display during the entire exhibit period.

### **Forests of Fun 3 (SF 50214)**

Exhibit any product or display illustrating an activity from the book. The exhibit may include, but isn't limited to, original works, objects, demonstrations, digital presentations, programs, websites, games, apps, performances, or posters which you have made. Choose whatever method best shows what you've learned. You must furnish any equipment you need for your exhibit. Internet service will not be provided for the exhibit. All exhibits must include something visual, such as a printed copy of a digital presentation, which will remain on display during the exhibition. Electronic equipment will only be used during your personal judging time and will not remain on display during the entire exhibit period.

### **Forestry Innovation Class (SF 50215)**

Demonstrate the skills and knowledge you have gained through your Forestry project. Exhibit may be the result of knowledge gained from project manuals; independent study, interaction with natural resource or conservation professionals. The exhibit may include, but isn't limited to, original works, objects, demonstrations, digital presentations, programs, websites, games, apps, performances, or posters which you have made. Choose whatever method best shows what you've learned. Your exhibit should not fit in the other exhibit options for this project. You must furnish any equipment you need for your exhibit. Internet service will not be provided for the exhibit. All exhibits must include something visual, such as a printed copy of a digital presentation, which will remain on display during the exhibition. Electronic equipment will only be used during your personal judging time and will not remain on display during the entire exhibit period.



## **GEOLOGY**

**Size and number of exhibit cases should relate appropriately to the number of specimens being displayed for a specified class.** Specimens are not limited to Illinois locations. All levels of *Geology* use the same manual, *Geology-Introduction to the Study of the Earth*. **Do not identify your specimens any further than phylum and class.** There is one exception to this for fossils that are identified to phylum OR class. Class should only be used for fossils of mollusks, back-boned animals, and arthropods.

### **Pebble Pups 1 (SF 50218)**

Display 8 to 19 rocks and mineral specimens with three minerals in the collection. Collection may include duplications that show variations. Label collection and note where found.

### **Pebble Pups 2 (SF 50219)**

Display at least 20, but no more than 29, rocks and mineral specimens with seven minerals in the collection. Collection may include duplications that show variations. Label collection and note where found.

### **Rock Hounds 1 (SF 50220)**

Display at least 30, but no more than 40, rocks and mineral specimens with ten minerals in the collection. Rocks should include at least three igneous, two metamorphic, and three sedimentary groups. Label collection and note where found.

### **Rock Hounds 2 (SF 50221)**

Display no more than 50 specimens that have been selected to illustrate a specific theme of the exhibitor's choosing. Be creative. Sample categories could include (but are not limited to): industrial minerals and their uses; a specific rock group and the variety that occurs in that group, including some minerals that occur in that environment; select fossils traced through the geologic ages; minerals and their crystal habits; rocks and minerals used in the lapidary arts.

### **Geology Innovation Class (SF 50222)**

#### **Open to youth enrolled in *Geology*.**

Demonstrate the skills and knowledge you have gained through the *Geology* project. Exhibit may be the result of knowledge gained from project manuals; independent study about Illinois rock(s) and mineral(s), interaction with geology professionals; and/or individual exploration in the area of geology. The exhibit may include, but isn't limited to, original works, objects, demonstrations, digital presentations, programs, websites, games, apps, performances, or posters which you have made. Choose whatever method best shows what you've learned. Your exhibit should not fit in the other exhibit options for this project. You must furnish any equipment you need for your exhibit. Internet service will not be provided for the exhibit. All exhibits must include something visual, such as a printed copy of a digital presentation, which will remain on display during the exhibition. Electronic equipment will only be used during your personal judging time and will not remain on display during the entire exhibit period.

## **HEALTH**

**All display boards must include a reference list indicating where information was obtained, giving credit to the original author, to complete the 4-H member's exhibit. This reference list should/might include website links, people and professionals interviewed, books, magazines, etc. This reference list should be attached to the back of a poster or display board or included as part of the display visible to the public. A judge is not to discredit an exhibit for the way references are listed. Display boards should be no larger than 36"X48".**

### **Health 1 (SF 50226)**

Create an educational poster/display about any health topic of choice that is age/grade appropriate. Another option is to create a family first aid kit, emergency kit, and emergency kit to take on camping, hiking, biking, etc.

### **Health 2 (SF 50227)**

Create an educational poster or display about any health topic of choice that is age/grade appropriate. Another option is to create a personal nutrition kit to use when doing physical activity like chores, working out at the gym, hiking, biking, skiing, or another similar kit.

### **Health 3 (SF 50228)**

Create an educational poster or display about any health topic of choice that is age/grade appropriate. Another option is to create an activity or guide to help yourself or others become more aware of financial wellness, mental health, disease prevention, or other similar topic that promotes healthy habits.

### **Health - Your Thoughts Matter - Navigating Mental Health (SF 50230)**

Prepare an exhibit that demonstrates the knowledge and understanding gained through completion of the Your Thoughts Matter Member Project Guide. Exhibit the following 1) a poster or display that highlights activities and knowledge gained as you completed any two of activities 1 - 9 included in the curriculum; AND 2) the item you created in Activity 10 - the flyer, website, video, or other promotional tool that points individuals to the resources you found.

### **Health Innovation Class (SF 50229)**

**Open to youth enrolled in Health 1, 2 or 3.**

Demonstrate the skills and knowledge you have gained through the Health project. **Your exhibit should not fit in the other exhibit options for this project.** The exhibit may include, but isn't limited to, original works, objects, demonstrations, digital presentations, programs, websites, games, apps, performances, or posters which you have made. Choose whatever method best shows what you've learned. You must furnish any equipment you need for your exhibit. Internet service will not be provided for the exhibit. All exhibits must include something visual, such as a printed copy of a digital presentation, which will remain on display during the exhibition. Electronic equipment will only be used during your personal judging time and will not remain on display during the entire exhibit period.

## **HORTICULTURE: FLORICULTURE**

### **Floriculture A (SF 50192)**

Exhibit one of the following options: Please note that flower arrangements, including the vase or container, must be no larger than 12"X 12".

- Create a flower arrangement, either a round arrangement or a bud vase. No silk flowers are permitted; **OR**
- Create a photo collage or a collection of pictures of flowers that you have raised. Label your flowers by name and tell if you started with a seed, cutting or transplants. Mount pictures on a poster board; **OR**
- Exhibit in one container: 3 stems of blooms - each with attached foliage. Foliage that would go inside the container may be removed. All three blooms or stems should be the same variety, color, shape and size and must have been grown from seed, young seedling plants, bulbs or rhizomes by the exhibitor. (NOTE: Exhibitors choosing lilies should include no more than 2/3 of foliage for their exhibit.)





### **Floriculture B (SF 50193)**

Exhibit one of the following options:

- Display a mixed planter that may include herbs with foliage plants and/or flowering plants. The planter should include three or more kinds of plants. The container exhibit space must not exceed 18"x18".
- Create an artistic display of dried flowers and/or herbs explaining how each was dried; **OR**
- Create a photo collage or collection of pictures of plants from your theme garden. Label your plants by name and explain how the plants were chosen to fit the theme.
- Create an artistic fairy garden of plants, flowers and/or herbs. Explain the process you utilized to prepare your fairy garden. Label your plants by name and explain how the plants were chosen to fit the theme.

### **Floriculture C (SF 50194)**

Exhibit one of the following options:

- Create a terrarium. The size of the terrarium should be appropriate for use on a table at home, and no larger than 12" deep, 18" long, and 16" high. Selected plants should be started by the exhibitor from cuttings or seeds or as purchased plugs. The terrarium must be cared for by the exhibitor for at least 5 months. Exhibitor should be able to explain the different plant, soil, and environmental needs and watering requirements of a closed system ; **OR**
- Exhibit a plant that you propagated from cuttings, layering or division or started from seed. Create a photo board showing the progression of growth. Tips for vegetative propagation of houseplants can be found in the University of Illinois Extension Gardener's Corner ([go.illinois.edu/gardenerscorner](http://go.illinois.edu/gardenerscorner)).

### **Floriculture D (SF 50195)**

Exhibit one of the following options: The maximum size for exhibits in this category is 24"x24"x36".

- Create a centerpiece around a theme such as a wedding, holiday, birthday, etc. No silk flowers are permitted; **OR**
- Create an exhibit of forced bulbs in a pot.

### **Floriculture Display (SF 50196)**

**(Open to youth enrolled in Floriculture A, Floriculture B, Floriculture C, and Floriculture D)**  
Present an exhibit of the member's choice that focuses on some aspect of floriculture which does not fit in the categories above. The exhibit may include, but isn't limited to, dish gardens, original works, objects, demonstrations, digital presentations, programs, websites, games, apps, performances, or posters which you have made. Choose whatever method best shows what you've learned. You must furnish any equipment you need for your exhibit. Internet service will not be provided for the exhibit. All exhibits must include something visual, such as a printed copy of a digital presentation, which will remain on display during the exhibition. Electronic equipment will only be used during your personal judging time and will not remain on display during the entire exhibit period.



## HORTICULTURE: VEGETABLES, HERBS & FRUITS

All exhibits must have been grown by the exhibitor as part of their current gardening 4-H project. Exhibitors should be knowledgeable about various aspects of the produce, including but not limited to different varieties, soil testing, fertilizers used, etc. Exhibits should be prepared according to the Illinois Vegetable Garden Guide website: <http://extension.illinois.edu/gardening>. Waxes and oils may not be used on vegetables or fruits. Any plant infested with insects will be removed from the exhibit area and will not be eligible for champion awards.

### Herb Container Display (SF 50313)

**(Open to youth in Vegetable Gardening A, Vegetable Gardening B, Vegetable Gardening C, and Vegetable Gardening D)**

Herbs should be grown in pots (8" maximum diameter). Categories: Mint, Oregano, Rosemary, Sage, Thyme, and all other herbs. Herbs should be labeled with common and Latin names. Herbs should be in your care for a minimum of three months for state fair exhibits. Remove dead leaves from plants and check that the soil is clear of debris such as dead leaves. When exhibiting herb plants, be sure to grow the plants in the container to be displayed to avoid transplant shock. Exhibits will be evaluated based on cleanliness, uniformity, condition, quality, and trueness to variety. Additional herb resources are located on the project resources section of the Illinois 4-H website.

- Display must include 4 or more different kinds of herbs. There may not be more than 2 different varieties of any herb. For example, peppermint and chocolate mint would be classified as two different herb varieties.
- In instances where containers display more than one variety of herb, special care should be taken that each distinct variety is accessible and clearly visible to the judges to ensure full points for cleanliness.

### Vegetable/Fruit Display (SF 50314)

**(Open to youth in Vegetable Gardening A, Vegetable Gardening B, Vegetable Gardening C, and Vegetable Gardening D)**

1. This class is allowed a 2'6" x 2'6" space for each display.
2. Display must include 6 or more different kinds of vegetables or fruits. There may not be more than 2 different varieties of any vegetable/fruit. For example, red and white potatoes would be classified as two different varieties. Acorn squash and zucchini would be classified as two different vegetables.
3. The number and type of vegetables/fruits used must conform to the Vegetable/Fruit Plate/Display List. *Fruit Plate list is below Vegetable Plate list.*
4. Exhibitors must provide the name and variety of all vegetables/fruits used. (i.e. Cabbage - Golden Acre; Cucumber, slicing - Straight Eight; Tomatoes, slicing - Rocky Top; Snap Beans - Contender, etc.).

### Vegetable Plates (SF 50315)

**(Open to youth in Vegetable Gardening A, Vegetable Gardening B, Vegetable Gardening C, and Vegetable Gardening D)**

1. Exhibit must include 2 single vegetable plates. (Exhibitor will furnish the disposable plates.)
2. Exhibitors must provide the name and variety of all vegetables/fruits used. (i.e. Cabbage - Golden Acre; Cucumber, slicing - Straight Eight; Tomatoes, slicing - Rocky Top; Snap Beans - Contender, etc.). Number of vegetables on plates must conform to plate list below.
3. Only one variety on each plate.
4. An exhibitor cannot show two plates of the same type vegetable. (i.e.: Cannot exhibit red and white potatoes or zucchini and straight neck summer squash.)

## VEGETABLE PLATE/DISPLAY LIST

When selecting vegetables for exhibition, keep in mind that the judge will evaluate them on the basis of cleanliness, uniformity, condition, quality, and trueness to variety. (Lists are provided by UI Extension Horticulturists; Items are listed according to the correct definition of vegetables)

Asparagus (5 spears)	Parsnips (5)
Beans, Lima (12 pods)	Peas, (12 pods)
Beets (5)	Peppers, large fruited (bell/banana) (5)
Broccoli (1 head)	Peppers, small fruited (chili/cherry) (12)
Brussel sprouts (12 sprouts)	Popcorn (5)
Cabbage (head)	Potatoes (any variety) (5)
Cauliflower (1 head)	Pumpkin (1)
Carrots (5)	Rhubarb, trimmed stalks (3)
Cucumber, pickling or slicing (5)	Rutabaga (5)
Eggplant (1)	Salsify (5)
Garlic (5)	Squash, summer (any variety) (3)
Kohlrabi (5)	Sweet corn, in husks (5)
Lettuce (1 head or plant)	Tomatoes, slicing (5)
Muskmelon incl. cantaloupe (1)	Tomatoes, small fruited (12)
Okra (12)	Turnip (5)
Onions, large, dry (5)	Watermelon (1)
Onions, green or set (12)	
Squash, winter (Acorn, butternut, buttercup, spaghetti, Hubbard, Turks' Turban) (1)	
Beans, Snap, Green Pod or Golden Wax (12 pods)	
Greens (collard, endive, escarole, kale, mustard, spinach, Swiss chard) (1 plant)	
Horseradish Root (1 marketable root specimen harvested this year)	

## Vegetable Gardening Display - Other (SF 50316)

(Open to youth in Vegetable Gardening A, Vegetable Gardening B, Vegetable Gardening C, Vegetable Gardening D) Present an exhibit of the member's choice that focuses on some aspect of vegetable gardening which does not fit in the categories above. The exhibit may include, but isn't limited to, original works, objects, demonstrations, digital presentations, programs, websites, games, apps, performances, or posters which you have made. Choose whatever method best shows what you've learned. You must furnish any equipment you need for your exhibit. Internet service will not be provided for the exhibit. All exhibits must include something visual, such as a printed copy of a digital presentation, which will remain on display during the exhibition. Electronic equipment will only be used during your personal judging time and will not remain on display during the entire exhibit period.

## Fruit Plates (SF 50317)

(Open to youth in Vegetable Gardening A, Vegetable Gardening B, Vegetable Gardening C, and Vegetable Gardening D)

1. Exhibit must include 2 single fruit plates. (Exhibitor will furnish the disposable plates.)
2. Exhibitors must provide the name and variety of all vegetables/fruits used. Number of fruits on plates must conform to plate list below.
3. Only one variety on each plate.
4. An exhibitor cannot show two plates of the same type fruit. (i.e.: Cannot exhibit Gala & Jonathan Apples, Mazzard & Gisela Cherries, etc.)

## FRUIT PLATE LIST

Fruit will be judged using the same general criteria used for vegetables. Fruit will be judged for the stage of maturity normal for that season and growing location. Emphasis will be placed on how well fruit approaches market quality. When selecting fruits for exhibition, keep in mind that the judge will evaluate them on the basis of cleanliness, uniformity, condition, quality, and trueness to variety. (Lists are provided by UI Extension Horticulturists; Items are listed according to the correct definition of fruit varieties at <https://web.extension.illinois.edu/fruit/>)

Strawberries (Everbearers) - 1 pint  
Grapes - 2 bunches  
Apples - 5  
Pears - 5  
Wild Plums - 1 pint  
Other Small Fruit or Berries (Do not duplicate entries from the above fruits) - 1 pint  
Other Fruits or Nuts (Do not duplicate entries from the above fruits) - 5

## **INTERCULTURAL**

**Due to space restrictions, exhibits are limited to 2' 6" wide and 15" deep.**

### **Passport to the World, Individual (SF 50233a)**

Prepare a display illustrating what you have learned about a country. This might include topics such as-geography, economy, agriculture, people, language, housing, culture, music, crafts, clothing, environment, or holidays. Exhibits can focus on one or two topics in depth or cover more topics in brief. Exhibit should be educational in nature and should not promote one's beliefs over another person's beliefs. The exhibit may include, but isn't limited to, original works, objects, demonstrations, digital presentations, programs, websites, games, apps, performances, or posters which you have made. Choose whatever method best shows what you've learned. You must furnish any equipment you need for your exhibit. Internet service will not be provided for the exhibit. All exhibits must include something visual, such as a printed copy of a digital presentation, which will remain on display during the exhibition. Electronic equipment will only be used during your personal judging time and will not remain on display during the entire exhibit period. Due to space restrictions, exhibits are limited to 2' 6" wide and 15" deep.

### **Passport to the World, Club (SF 50233b)**

Exhibit a display illustrating what your club has learned about a country. This might include topics such as-geography, economy, agriculture, people, language, housing, culture, music, crafts, clothing, environment, or holidays. Exhibits can focus on one or two topics in depth or cover more topics in brief. Exhibit should be educational in nature and should not promote one's beliefs over another person's beliefs. The exhibit may include, but isn't limited to, original works, objects, demonstrations, digital presentations, programs, websites, games, apps, performances, or posters which you have made. Choose whatever method best shows what you've learned. You must furnish any equipment you need for your exhibit. Internet service will not be provided for the exhibit. All exhibits must include something visual, such as a printed copy of a digital presentation, which will remain on display during the exhibition. Electronic equipment will only be used during your personal judging time and will not remain on display during the entire exhibit period. The display must be accompanied by 3 or more club exhibitors at the time of the judge's critique. Club members should make a 5-7-minute presentation to the judge. All club members present for the judge's critique should be able to discuss the project and answer questions. Only club members present for judging who participate in the actual critique and presentation are eligible for ribbons and premiums. Cloverbuds are not eligible for state fair and cannot be promoted and participate in a group presentation at state fair. Due to space restrictions, exhibits are limited to 2' 6" wide and 15" deep.

### **Diversity & Cultural Awareness (SF 50234a)**

Create a display or binder portfolio that illustrates the results of a minimum of three (3) completed activities from the project book. Due to space restrictions, exhibits are limited to 2' 6" wide and 15" deep.

### **Diversity & Cultural Awareness, Club (SF 50234b)**

Exhibit a display illustrating the steps that the club has completed on the project selected for the year, including reflection on activities completed. Include a written outline or report of accomplishments and future goals. The exhibit may include, but isn't limited to, original works, objects, demonstrations, digital presentations, programs, websites, games, apps, performances, or posters which you have made. Choose whatever method best shows what the club members have learned. You must furnish any equipment you need for your exhibit. Internet service will not be provided for the exhibit. All exhibits must include something visual, such as a printed copy of a digital presentation, which will remain on display during the exhibition. Electronic equipment will only be used during your personal judging time and will not remain on display during the entire exhibit period. The display must be accompanied by 3 or more club exhibitors at the time of the judge's critique. Club members should make a 5-7-minute presentation to the judge. All club members present for the judge's critique should be able to discuss the project and answer questions. Only club members present for judging who participate in the actual critique and presentation are eligible for ribbons and premiums. Cloverbuds are not eligible for state fair and cannot be promoted and participate in a group presentation at state fair. Due to space restrictions, exhibits are limited to 2' 6" wide and 15" deep.

## INTERIOR DESIGN

### **Design Decisions, Beginning (SF 50242)**

Any exhibit must have been created or redesigned by the exhibitor as part of their current Interior Design 4-H project. Exhibitors should be knowledgeable about various aspects of the project. Exhibits could include items such as, but not limited to, comparison studies of different products or techniques; made accessories, wall-hangings, window coverings, or furniture items; refinished or redesigned furniture; or a plan to solve some type of interior design problem. Exhibit should be appropriate to the exhibitor's age, skills and ability in this project.

### **Design Decisions, Intermediate (SF 50243)**

Any exhibit must have been created or redesigned by the exhibitor as part of their current Interior Design 4-H project. Exhibitors should be knowledgeable about various aspects of the project. Exhibits could include items such as, but not limited to, comparison studies of different products or techniques; made accessories, wall-hangings, window coverings, or furniture items; refinished or redesigned furniture; or a plan to solve some type of interior design problem. Exhibit should be appropriate to the exhibitor's age, skills and ability in this project.

### **Design Decisions, Advanced (SF 50244)**

Any exhibit must have been created or redesigned by the exhibitor as part of their current Interior Design 4-H project. Exhibitors should be knowledgeable about various aspects of the project. Exhibits could include items such as, but not limited to, comparison studies of different products or techniques; made accessories, wall-hangings, window coverings, or furniture items; refinished or redesigned furniture; or a plan to solve some type of interior design problem. Exhibit should be appropriate to the exhibitor's age, skills and ability in this project.

### **Interior Design Innovation Class (SF 50245)**

#### **Open to enrolled in Interior Design.**

Demonstrate the skills and knowledge you have gained through the Interior Design project. The exhibit may include, but isn't limited to, original works, objects, demonstrations, digital presentations, programs, websites, games, apps, performances, or posters which you have made. Choose whatever method best shows what you've learned. Your exhibit should not fit in the other exhibit options for this project. You must furnish any equipment you need for your exhibit. Internet service will not be provided for the exhibit. All exhibits must include something visual, such as a printed copy of a digital presentation, which will remain on display during the exhibition. Electronic equipment will only be used during your personal judging time and will not remain on display during the entire exhibit period.

## LEADERSHIP

### **Leadership 1 (SF 50249)**

Create a binder portfolio with a minimum of four (4) completed activities each year from the areas noted below. Build upon your previous year's work. Photocopies or original pages of the completed activities from the book should be included in the portfolio.

- **First Year** - One activity from each of the following sections: Understanding Self; Communication; and Getting Along with Others, plus one activity of exhibitor's choice from the manual.
- **Second Year** - One activity from each of the following sections: Getting Along with Others; Learning to Learn; and Making Decisions, plus one activity of exhibitor's choice from the manual.
- **Third Year** - One activity from each of the following sections: Making Decisions; Managing; and Working with Groups, plus one activity of exhibitor's choice from the manual.

## Leadership 2 (SF 50250)

Building upon your previous work, continue adding to your binder portfolio with a minimum of four (4) completed activities each year from the areas noted below. Photocopies or original pages of the completed activities from the book should be included in the portfolio.

- **First Year** - One activity from each of the following sections: Understanding Self; Communication; and Getting Along with Others, plus one activity of exhibitor's choice from the manual.
- **Second Year** - One activity from each of the following sections: Getting Along with Others; Learning to Learn; and Making Decisions, plus one activity of exhibitor's choice from the manual.
- **Third Year** - One activity from each of the following sections: Making Decisions; Managing; and Working with Groups, plus one activity of exhibitor's choice from the manual.

## Leadership 3 (SF 50251)

Building upon your previous work, continue adding to your binder portfolio with a minimum of four (4) completed activities each year from the areas noted below. Photocopies or original pages of the completed activities from the book should be included in the portfolio.

- **First Year** - One activity from each of the following sections: Understanding Self; Communication; and Getting Along with Others, plus one activity of exhibitor's choice from the manual.
- **Second Year** - One activity from each of the following sections: Getting Along with Others; Learning to Learn; and Making Decisions, plus one activity of exhibitor's choice from the manual.
- **Third Year** - One activity from each of the following sections: Making Decisions; Managing; and Working with Groups, plus one activity of exhibitor's choice from the manual.

## Leadership Innovation Class (SF 50252)

**Open to youth enrolled in Leadership 1, 2, or 3.**

Demonstrate the skills and knowledge you have gained through the Leadership project. **Your exhibit should not fit in the other exhibit options for this project.** The exhibit may include, but isn't limited to, original works, objects, demonstrations, digital presentations, programs, websites, games, apps, performances, or posters which you have made. Choose whatever method best shows what you've learned. You must furnish any equipment you need for your exhibit. Internet service will not be provided for the exhibit. All exhibits must include something visual, such as a printed copy of a digital presentation, which will remain on display during the exhibition. Electronic equipment will only be used during your personal judging time and will not remain on display during the entire exhibit period.

## Leadership Group Exhibit (SF 50254)

**Open to clubs and groups whose members are enrolled in any Leadership project**

Exhibit a display illustrating how your group has used the Teens As Leaders model effectively in your club, community, school, or state. Leadership activities might include planning, advising, promoting, mentoring, teaching or advocating for change. The exhibit may include, but isn't limited to, original works, objects, demonstrations, digital presentations, programs, websites, games, apps, performances, or posters which you have made. Choose whatever method best shows what you've learned. You must furnish any equipment you need for your exhibit. Internet service will not be provided for the exhibit. All exhibits must include something visual, such as a printed copy of a digital presentation, which will remain on display during the exhibition. Electronic equipment will only be used during your personal judging time and will not remain on display during the entire exhibit period. The display must be accompanied by 3 or more 4-H members at the time of the judge's critique. Club members should make a 5- to 10-minute presentation to the judge. All club members present for the judge's critique should be able to discuss the project and answer questions. Only club members present for judging who participate in the actual critique and presentation are eligible for ribbons and premiums. Cloverbuds are not eligible for state fair and cannot be promoted and participate in a group presentation at state fair. Due to space limitations, exhibits are limited to 2'6" wide and 15" deep. More information on Teens as Leaders Model found here: <https://go.illinois.edu/LeadershipModel>.



## MAKER

### **Maker: Open to youth in all projects. (SF 50400)**

Exhibits in this category are designed to be multi-disciplinary in nature, innovative, and must not fit into any other exhibit category. To qualify for this category, your project **MUST** abide by the following guidelines:

- Exhibitors must complete the DIY Make & Build Curriculum, and answer all the questions at the end of each lesson. You must display (or upload if virtual) your answers to these questions, as well as your Maker Log from the DIY Make and Build curriculum.
- Exhibits must be an object or device that has an intended purpose and uses technology in either a mechanical way, digital (computer) way, or combination of the two. Your device or object **cannot** be one of the included activities in the DIY Make and Build Curriculum.
- The device must be something that can be used in everyday life by multiple people (a target audience), and **MUST** be manufactured/built by the exhibitor (If not fully manufactured by the exhibitor, the device **MUST** be modified structurally or be reprogrammed to perform a different function other than what it was designed to do).
- Exhibits **MUST** be able to interact with the outside world. (e.g. an on off switch, input sensors, feedback, etc.)
- Exhibits **MUST** include a detailed build log with instructions on how to make or build the exhibit, **AND** contain either a 3D rendering or detailed and labeled sketches of the device/product.
- All parts and software used in the design/build **MUST** be listed in a detailed Bill of Materials including cost per item and total cost. Total time spent on the build must be documented in your build log.

In addition, exhibitors are **HIGHLY** encouraged to use tools such as 3-D printers, laser cutters, routers and/or other hand/power tools to help in the manufacturing process (**NOTE: Simply 3-D printing or laser cutting an object without the other specifications does not qualify as a Maker Project**). It is also **HIGHLY** encouraged that exhibits use Open Source software and/or hardware in the build.

## NATURE: NATURAL RESOURCES AND OUTDOOR ADVENTURES

Electricity and water are **NOT** available for these displays. **NO live animals or reptiles are permitted in these exhibits.**

### **Exploring Your Environment 1 (SF 50267a)**

Exhibit any item, project, or display made as it relates to an activity in the *Exploring Your Environment - Ecosystem Services* project manual (product #08410). The display should demonstrate an understanding of natural and/or manmade environments, how humans affect the environment, or how the environment affects our lives. Include your project manual that documents activity recordkeeping, your answers to activity questions, and details personal thoughts and ideas.

### **Exploring Your Environment 2 (SF 50267b)**

Exhibit any item, project, or display made as it relates to an activity in the *Exploring Your Environment - Earth's Capacity* project manual (product #08411). The display should demonstrate an understanding of one of the following: stewardship of natural resources, investigating greenhouse effects on living organisms, methods of reducing or managing waste in your home or community, or calculating your ecological footprint. Include your project manual that documents activity recordkeeping, your answers to activity questions, and details personal thoughts and ideas.

**Natural Resources 1 (SF 50256)**

Exhibit any item developed from the project book, *Step Into Nature*.

**Natural Resources 2 (SF 50257)**

Exhibit any item developed from the project book, *Explore the Natural World*.

**Natural Resources 3 (SF 50258)**

Exhibit any item developed from the project book, *Blaze the Trail*.

**Outdoor Adventures 1-3 (SF 50259)**

Exhibit a display illustrating an activity completed from the project manual.

**Natural Resources or Outdoor Adventures Innovation Class (SF 50278)****Open to youth enrolled in any Natural Resources or Outdoor Adventures project.**

Demonstrate the skills and knowledge you have gained through your Natural Resources or Outdoor Adventures project. Exhibit may be the result of knowledge gained from project manuals; independent study, interaction with natural resource or conservation professionals. The exhibit may include, but isn't limited to, original works, objects, demonstrations, digital presentations, programs, websites, games, apps, performances, or posters which you have made. Choose whatever method best shows what you've learned. Your exhibit should not fit in the other exhibit options for this project. You must furnish any equipment you need for your exhibit. Internet service will not be provided for the exhibit. All exhibits must include something visual, such as a printed copy of a digital presentation, which will remain on display during the exhibition. Electronic equipment will only be used during your personal judging time and will not remain on display during the entire exhibit period.

**NATURE: FISHING AND WILDLIFE****Sportsfishing 1 (SF 50260)**

Exhibit a product or display made to complete an activity in the *Take the Bait* project manual. This could include, but is not limited to, displays on: different types of fishing tackle, identifying different baits and their uses (no actual bait, please) or identifying the anatomy of a fish. For safety reasons, lures must be placed in a plastic case.

**Sportsfishing 2 (SF 50261)**

Exhibit a product or display made to complete an activity in the *Reel in the Fun* project manual. This could include, but is not limited to, displays on: different types of knots or rigs and their use; a collection of fishing lures, labeled with their use; or information on preparing and cooking fish (not recipes). For safety reasons, lures must be placed in a plastic case.

**Sportsfishing 3 (SF 50262)**

Exhibit a product or display made to complete an activity in the *Cast into the Future* project manual. This could include, but is not limited to, displays on: making artificial flies and lures; researching effects of water temperature; sportsfishing careers; or identifying insects that fish eat. For safety reasons, lures must be placed in a plastic case.

**Wildlife 1 (SF 50266)**

Exhibit any activity developed from the project manual. Be able to explain the importance of and concept behind the exhibit.

**Wildlife 2 (SF 50263)**

Exhibit any activity developed from the project manual. (Ex. Create a display of the life history of an animal.) Within the exhibit, explain the importance of and concept behind the exhibit.

**Wildlife 3 (SF 50265)**

Exhibit any activity developed from the project manual. Be able to explain the importance of and concept behind the exhibit.



## **Fish and Wildlife Innovation Class (SF 50264)**

### **Open to youth enrolled in any Sportfishing or Wildlife project.**

Demonstrate the skills and knowledge you have gained through your Sportsfishing or Wildlife project. Exhibit may be the result of knowledge gained from project manuals; independent study, interaction with natural resource or conservation professionals. The exhibit may include, but isn't limited to, original works, objects, demonstrations, digital presentations, programs, websites, games, apps, performances, or posters which you have made. Choose whatever method best shows what you've learned. Your exhibit should not fit in the other exhibit options for this project. You must furnish any equipment you need for your exhibit. Internet service will not be provided for the exhibit. All exhibits must include something visual, such as a printed copy of a digital presentation, which will remain on display during the exhibition. Electronic equipment will only be used during your personal judging time and will not remain on display during the entire exhibit period

## **PHOTOGRAPHY**

ALL photos in exhibits must have been taken by the exhibitor. Photo/Model releases from individuals pictured in the exhibitor's photographs are required unless the photograph is of a group in a public place where identification would not be an issue. Meta data must be included on the back of the picture. The photo release and meta data tip sheet can be obtained at: <https://go.illinois.edu/PhotographyProject>. Photos may be taken with a camera, an electronic tablet (i.e. iPad), or a cell phone.

**ALL** photos must be accompanied by details of the camera settings that include:

- Camera/device used
- Aperture (F-stop)
- Exposure time (shutter speed)
- ISO (film/sensor sensitivity)
- Lighting used (flash, artificial, sunlight, other)
- Lens Filters (Ultra-Violet, Polarizing, etc.) if used.

Additional details required for Photo Editing **ONLY**:

- Photo editing software/application used (required for **ALL** edits and retouches except for cropping)
- Filters used (lens filters and or digital/software filters)

Members are allowed to shoot on a camera's automatic setting but should be able to find the metadata information on the photo to discuss the information above.

The exhibition size requirements for all photographs will be:

- Minimum image size: 5" x 7"
- Maximum image size: 8" x 10"
- Maximum exhibit size (including frame): 18" x 20"

All exhibitors must include unframed (taped to the back of the framed exhibit or attached to the project booklet) **original or un-edited** versions of either the same subject or the examples of the same technique that the framed image represents. This will assist the judge in understanding the choices made by the photographer to build the exhibited composition.

**NOTE:** Images taken with devices that apply an automatic filter will not be eligible for award.

### **Photography 1 (SF 50268)**

Exhibit one framed photo which demonstrates your understanding of a technique you learned from your Photography 1 project manual. No photo editing is allowed in this class except cropping and red eye removal. Be prepared to show the page in the manual of the technique you are demonstrating.

### **Photography 2 (SF 50269)**

Exhibit one of the options listed below:

- Exhibit one framed 8" x 10" close-up photograph using the skills learned on pages 58-61 (section: Bits and Pieces) of the project manual titled *Level 2 Next Level Photography*. No photo editing is allowed in this class except cropping and red eye removal. Be prepared to show the page in the manual of the technique you are demonstrating. **OR**
- Exhibit one framed 8" x 24" or smaller panorama photograph using the skills learned on pages 62-65 (section: Panorama) of the project manual titled *Level 2 Next Level Photography*. No photo editing is allowed in this class except cropping and red eye removal. Be prepared to show the page in the manual of the technique you are demonstrating.
- Exhibit one framed 8" x 10" photo which demonstrates your understanding of a technique you learned from your Photography 2 project manual. No photo editing is allowed in this class except cropping and red eye removal. Be prepared to show the page in the manual of the technique you are demonstrating.

### **Photography 3 (SF 50270)**

Exhibit one of the options listed below:

- Exhibit one framed 8" x 10" still-life photo that demonstrates good composition, including color, form, texture, lighting and depth of field. No photo editing is allowed in this class except cropping and red eye removal. Be prepared to show the page in the manual of the technique you are demonstrating. **OR**
- Exhibit one framed 8" x 10" photo which demonstrates your understanding of a technique you learned from your Photography 3 project manual. No photo editing is allowed in this class except cropping and red eye removal. Be prepared to show the page in the manual of the technique you are demonstrating.

### **Photo Editing (SF 50271)**

**Open to members in Photography 1, Photography 2, and Photography 3.**

Exhibit one framed 8" x 10" photo that has been altered using digital photo-editing techniques (beyond cropping and red-eye reduction). Include a print of the original photo(s), taped to the back of the photo frame. Photos in which an automatic filter was applied at the time the photograph was taken will not be eligible for award.

## **PLANTS & SOILS**

### **Cover Crops (SF 50280)**

Exhibit an experimental or educational activity related to one experience from your project; **OR** prepare a display focusing on any activity related to the cover crops project. This could be related, but not limited, to plant growth & development, cover crop benefits, land management, sustainability, or other topics of interest to the member related to cover crops. A cover crop might include any plant that is sown in between primary production crops for the benefit of overall farm health rather than crop yield (examples: pennycress, clover, radish, annual ryegrass, etc.). The exhibit may include, but isn't limited to, original works, objects, demonstrations, digital presentations, programs, websites, games, apps, performances, or posters which you have made. Choose whatever method best shows what you've learned. You must furnish any equipment you need for your exhibit. Internet service will not be provided for the exhibit. All exhibits must include something visual, such as a printed copy of a digital presentation, which will remain on display during the exhibition. Electronic equipment will only be used during your personal judging time and will not remain on display during the entire exhibit period.

### **Plants & Soils 1 (SF 50281a)**

Prepare a 36" X 48" display or a poster no larger than 18" X 24" that illustrates an activity from the project manual. The display should demonstrate an understanding of environmental and internal factors that affect plant growth and the function and characteristics of soil. Include your project journal that documents activity recordkeeping requirements, answers activity questions, and details personal thoughts and ideas in response to each activity.

### **Plants & Soils 2 (SF 50281b)**

Prepare a 36" X 48" display or a poster no larger than 18" X 24" that illustrates an activity from the project manual. The display should demonstrate an understanding of the composition of plants, the functions of individual plant parts, plant life cycles, and the many ways plants reproduce. Include your project journal that documents activity recordkeeping requirements, answers activity questions, and details personal thoughts and ideas in response to each activity.

### **Plants & Soils 3 (SF 50281c)**

Prepare a 36" X 48" display or a poster no larger than 18" X 24" that illustrates an activity from the project manual. The display should demonstrate an understanding of the relationship between soil and other cycles found in nature. Displays should also provide an example of a leadership or service-learning experience focused on environmental stewardship. Include your project journal that documents activity recordkeeping requirements, answers activity questions, and details personal thoughts and ideas in response to each activity.

## **READY4LIFE CAREER & ENTREPRENEURSHIP EXPLORATION**

### **Ready4Life Exploration (Career) (50366A)**

**Open to 11- to 18-year-olds.**

Exhibits in this category must include the following: a) a physical representation of the career such as a model, prototype or display/portfolio that includes images of accomplished work; b) verbal or written explanations that demonstrate knowledge of the related career or business fields, potential careers, and the appropriate requirements for achievement in those fields. The judging criteria for this class values thoroughness of career exploration and pursuit above the workmanship of the physical specimen on display.

### **Ready4Life Exploration (Entrepreneurship) (50366B)**

**Open to 11- to 18-year-olds.**

Exhibits in this category must include the following: a) a physical representation of the business product such as a model, prototype or display/portfolio that includes images of accomplished work; b) verbal or written explanations that demonstrate knowledge of the related business fields, potential business opportunities, and the appropriate requirements for achievement in those fields. The judging criteria for this class values thoroughness of the business exploration and pursuit above the workmanship of the physical specimen on display.

## **ROBOTICS**

**NOTE:** If applicable for their class and display, exhibitors must bring their own computers for demonstration purposes; computers will not be provided. Internet access will not be available.

- Exhibits in classes 50285, or 50286 are designed to be used with LEGO Mindstorms (NXT, EV3, Lego Inventor, Lego Prime).
- Any other programmable robot kit such as Arduino or Raspberry Pi, should be exhibited in Robotics 3 (50292).
- Members should bring their robot to the state fair

### **Robotics 1 (SF 50285)**

Exhibitors will design, build and program a robot that uses at least one sensor to autonomously follow a path, respond to and/or avoid obstacles. **The robot must be autonomous and cannot be controlled remotely.** Exhibitors in this class must use at least one sensor in their robot design. Exhibiting youth must complete and display a build log which contains a diagram (drawing or 3D rendering) of their robot with each of the key components labeled, an explanation of why they made the design/programming decisions they made, and a short journal sharing what they learned about the engineering design process and programming throughout their work in the project (as well as while preparing the exhibit). In addition, each youth must bring their program code (on laptop or on paper), and their robot to demonstrate. The robot and obstacles must be able to fit on a 4' x 8' robotics table when being judged, and a 2' x 2' area when being displayed.

### **Robotics 2 (SF 50286)**

Exhibitors will design, build and program a robot that uses sensors and programming to complete one of the challenges selected challenges from the 2023 4-H State Robotics Challenge. **The robot must be autonomous and cannot be controlled remotely.** Eligible challenges will be marked in the Challenge Documents and on the Illinois 4-H Robotics website (<https://4h.extension.illinois.edu/ways-participate/projects/robotics>). Exhibiting youth must complete and display a build log which contains a diagram (drawing or 3D rendering) of their robot with each of the key components labeled, an explanation of why they made the design/programming decisions they made, and a short journal sharing what they learned about the engineering design process and programming throughout their work in the project (as well as while preparing the exhibit). In addition, each youth must bring their program code (on laptop or on paper), and their robot to demonstrate. The robot and obstacles must be able to fit on a 4' x 8' robotics table when being judged, and a 2' x 2' area when being displayed.

### **Robotics 3 (SF 50292)**

**Open to youth enrolled in Robotics 3, but may also include youth in Robotics 1 or 2 if the exhibit meets the guidelines.** Exhibit an original robot, either homemade or a kit that does not fall under Robotics 1 or 2 that can complete a task using MULTIPLE sensors. **The robot must be autonomous and cannot be controlled remotely.** If a robot kit is used, then some parts of the robot must be built using other components such as wood, plastic or metal. The robot can include any type of motors, pneumatics or sensors. The Innovation class can also be used for LEGO Mindstorms/ Spike Prime, etc. or Vex kits where the exhibit does not fall under Robotics 1 or 2 exhibit option. Autonomous control of the robot may also be achieved using an "open source" platform such as Arduino or Raspberry Pi and can be programmed using a coding language that is publicly available. Exhibitors in Robotics Innovation/Open-Source class must complete and display a build log which contains a diagram (drawing or 3D rendering) of their robot with each of the key components labeled, an explanation of why they made the design/programming decisions they made, and a short journal sharing what they learned about the engineering design process and programming throughout their work in the project (as well as while preparing the exhibit). In addition, each youth must bring their program code (on laptop or on paper), and their robot to demonstrate. Exhibits in this class must be able to fit on no more than a 6' x 2' table (or ground footprint), and must be fully assembled 15 minutes prior to the judging start time. No Exceptions.

### **Junk Drawer Robotics**

All exhibits should be original designs made with everyday objects and materials. Exhibits with purchased kits will not be accepted. Exhibitors are also required to bring their Junk Drawer Robotics Youth Robotics Notebook with the sections completed for the project they are exhibiting, including the sections leading up to the activity they are exhibiting. For example, if a youth is bringing Activity E from Junk Drawer Level 1, they should have robotics notebook sections A-E completed.

### **Junk Drawer Robotics 1 (SF 50287)**

Exhibit any item from the "To Make" activity from the Junk Drawer Robotics Level 1 Book. Be sure all robotics notebook sections within the module being exhibited are filled in.

### **Junk Drawer Robotics 2 (SF 50288)**

Exhibit any item from the "To Make" activity from the Junk Drawer Robotics Level 2 Book. Be sure all robotics notebook sections within the module being exhibited are filled in.

### **Junk Drawer Robotics 3 (SF 50289)**

Exhibit any item from the "To Make" activity from the Junk Drawer Robotics Level 3 Book. Be sure all robotics notebook sections within the module being exhibited are filled in.

## SHOOTING SPORTS

Participants must be a member of an approved 4-H Shooting Sports Club to exhibit. All exhibits should be posters or stand-alone items suitable for display to the general public. Stand-alone items have the intent to enhance the discipline such as a quiver, gun case, gun sling, locking cabinet, gun or target stand, sporting clays equipment wagon, etc. Exhibits deemed to be inappropriate by a superintendent will not be displayed.

NOTE: Shooting Sports Displays have the following prohibitions:

- No live ammunition.
- No knives or arrow tips (including field points, hunting broadheads, etc.).
- No functional or non-functional bows, firearms or firearm parts that could be reassembled are allowed.
- No humanoid shaped targets or reference to paintball, laser tag, air-soft, or pointing of any type of firearm or bow toward another person is allowed.
- No display involving primarily tactical design firearms (i.e. AR platform or military type firearms).
- No reference or use of the word "weapon" should be used in a display.
- Make sure there are no safety violations in your display. (Example: no earplugs or safety glasses in a picture of a person shooting a firearm.).

### **Shooting Sports: Archery Display (SF 50380)**

Exhibit a poster or stand-alone display depicting safe archery handling, range safety, the parts of the bow, tracking the target, target sighting, or another topic you have learned through the 4-H Shooting Sports program.

### **Shooting Sports: Rifle Display (SF 50381)**

Exhibit a poster or stand-alone display depicting safe firearm handling, range safety, the parts of the rifle, tracking the target, target sighting, or another topic you have learned through the 4-H Shooting Sports program.

### **Shooting Sports: Shotgun Display (SF 50382)**

Exhibit a poster or stand-alone display depicting safe firearm handling, range safety, the parts of the shotgun, tracking the target, target sighting, or another topic you have learned through the 4-H Shooting Sports program.

### **Shooting Sports: Hunting & Outdoor Skills Display (SF 50383)**

Exhibit a poster or stand-alone display related to something you learned in the Hunting & Outdoor Skills project.

### **Shooting Sports: Pistol Display (SF 50384)**

Exhibit a poster or stand-alone display depicting safe firearm handling, range safety, the parts of the pistol, tracking the target, target sighting, or another topic you have learned through the 4-H Shooting Sports program.



## SMALL ENGINES

Small Engine displays must be no larger than 4' x 4' display board. Exhibits must be portable. No complete engines, lawn tractors, tillers, chainsaws, etc. are permitted for display. No electrical power is available for displays/exhibits.

### Small Engines 1-3 (SF 50294)

- Exhibit a display, selecting one of the following items:
- **Ignition/Electrical System:** Identify the parts of the Ignition System and explain how magnetic energy is produced through the ignition system to ignite the spark plug; **OR**
- **Compression System:** Explain how heat energy is produced and engine power is measured by an engine and/or converted into mechanical energy through transmissions; **OR**
- **Heat Transfer:** Explain how heat is transferred through the cooling and lubrication system of an air cooled or water cooled engine; **OR**
- **Filter Maintenance:** Explain the proper maintenance and cleaning of the air, fuel and oil filters of an engine; **OR**
- **What does a serial number reveal?:** Explain the various information that can be learned from the serial number or identification number stamped on the shroud of a Briggs & Stratton engine; **OR**
- **Tools to do the job:** Identify and explain the function(s) of different specialty tools needed for small engine work, **OR**
- **Experimentation:** Explain through illustration an experiment you conducted from the project manual showing the results of your work.

## THEATRE ARTS

### Theatre Arts 1 (SF 50299)

Exhibit one of the following items:

- **Portfolio of acting activities** completed during the current year. This should include at least 3 of the following: list of roles/performances, pictures or description of hair or makeup, pictures or description of a favorite costume, pictures or description of a particular set piece or prop, ticket stubs or marketing materials, playbill, description of audition process, highlights of acting skills honed (such as stage directions, auditioning, projection, diction, character development, physicality, vocal expression, facial expressions, memorization, understanding of how to read a script, ability to take direction, confidence, collaboration with scene partners etc.) *Note: A video of performances is not considered a portfolio and will not be accepted for exhibit.* **OR**
- **Display illustrating a picture story** developed by the exhibitor. Your picture story should include a minimum of 3 boxes with a character, problem, and solution. **OR**
- **Write a personal monologue.** Create a character, decide what your character wants, what are the obstacles, and create your character's thoughts and struggles

### Theatre Arts 2 (SF 50230)

Exhibit one of the following items:

- **Block a scene.** Choose a scene from a published play and become the director. Clearly mark stage directions, blocking, entrances and exits, and any additional notes you would want to share with the actors. **OR**
- **Write a scene.** Create a scene that includes at least 2 characters, has an established setting, plot, and time, and include stage directions. **OR**
- **Create a mask** that either represents a character of your choice or models a mask from a given historical time period integral to the history of theatre.

### Theatre Arts 3 (SF 50301)

Exhibit one of the following items:

- **Portfolio of activities** for set design; make-up; or sound, props, or costuming completed during the current year. This should include pictures of activities, information on the show or performance, details on your involvement. **OR**
- **Display that includes** sound, props and costume charts appropriate for a selected scene from a story or play (limited to no more than 8 items); **OR**
- **Display a scenic design model** to depict a scene from a script; **OR**
- **Display illustrating a character** with make-up drawn or colored in. Include a photograph of a person wearing the make-up and information on the character's personality or part in the play.

### **Theatre Arts Innovation Class (SF 50302)**

#### **Open to youth enrolled in Theatre Arts.**

Demonstrate the skills and knowledge you have gained through Theatre Arts project. The exhibit may include, but isn't limited to, original works, objects, demonstrations, digital presentations, programs, websites, games, apps, performances, or posters which you have made. Choose whatever method best shows what you've learned. Your exhibit should not fit in the other exhibit options for this project. You must furnish any equipment you need for your exhibit. Internet service will not be provided for the exhibit. All exhibits must include something visual, such as a printed copy of a digital presentation, which will remain on display during the exhibition. Electronic equipment will only be used during your personal judging time and will not remain on display during the entire exhibit period.

### **TRACTOR**

#### **Tractor A (SF 50306)**

Exhibit a display or poster that illustrates one of the following topics: tractor safety; care and maintenance; the tractor as a valuable farm machine; or an activity listed in the 4-H project manual.

#### **Tractor B (SF 50307)**

Exhibit a display or poster that illustrates one of the following topics: cause and prevention of rollovers; diagram how an air cleaner works; diagram and identify an engine cooling system; regulations for battery & oil disposal; or another activity listed in the 4-H project manual.

#### **Tractor C (SF 50308)**

Exhibit a display or poster that illustrates one of the following topics: wagon and bin hazards; diagram and identify open and closed hydraulic systems; mower types and safety features; conveyor types and safety features; or another activity listed in the 4-H project manual.

#### **Tractor D (SF 50309)**

Exhibit a display or poster that illustrates one of the following topics: method of winterizing a tractor; chemical uses and required safety equipment; parts and process of internal combustion engine; procedure for cleaning and flushing tractor radiator; or another activity.

#### **Tractor Innovation Class (SF 50310)**

##### **Open to youth enrolled in Tractor A, B, C or D.**

Demonstrate the skills and knowledge you have gained through the Tractor project. This could be related to, but not limited to, advancements in technology, enhancements to crop production, or a topic of interest to the member related to tractors or farm machinery. The exhibit may include, but isn't limited to, original works, objects, demonstrations, digital presentations, programs, websites, games, apps, performances, or posters which you have made. Choose whatever method best shows what you've learned. Your exhibit should not fit in the other exhibit options for this project. You must furnish any equipment you need for your exhibit. Internet service will not be provided for the exhibit. All exhibits must include something visual, such as a printed copy of a digital presentation, which will remain on display during the exhibition. Electronic equipment will only be used during your personal judging time and will not remain on display during the entire exhibit period.

## VETERINARY SCIENCE

### **Veterinary Science (SF 50320)**

#### **(Open to youth in Veterinary Science A, Veterinary Science B, and Veterinary Science C)**

Prepare a display focusing on any activity related to the veterinary science project. The exhibit may include, but isn't limited to, original works, objects, demonstrations, digital presentations, programs, websites, games, apps, performances, or posters which you have made. Choose whatever method best shows what you've learned. You must furnish any equipment you need for your exhibit. Internet service will not be provided for the exhibit. All exhibits must include something visual, such as a printed copy of a digital presentation, which will remain on display during the exhibition. Electronic equipment will only be used during your personal judging time and will not remain on display during the entire exhibit period. Live animals are not permitted as exhibits in this area. For safety reasons, exhibits cannot include glass, syringes with needles or any other sharp objects. Exhibits may include activities from Veterinary Science projects OR from any other Animal project area.

## VIDEO

**All Exhibitors must bring their video to be judged on a USB flash drive and saved in .MP4 format.** Exhibitors are encouraged to post their video on YouTube.com in advance of State Fair. Exhibitors may choose whether to make the video "public, unlisted" (someone must have the link to view it), or "private" (only people you choose may view it). This will allow fairgoers to view the exhibits on display. There will be monitors at the exhibit table for viewing videos so exhibitors will NOT need to bring a laptop or device for viewing.

### **Requirements that apply to ALL video classes:**

Video submissions should be no longer than five (5) minutes in length (unless noted differently in class description). Videos are to be original and a result of the member's current year's work. Criteria for judging shall include: (1) Evidence of story line; (2) Use of camera angles; (3) Use of zooming techniques; and (4) Smoothness of scene changes. Image and sound quality will be considered in relation to equipment available to and used by exhibitor. All videos should comply with copyright regulations and display an image that is appropriate for 4-H audiences. No time or date should be imprinted on the video footage. All videos should include an opening title screen, as well as closing credits which include date of production, name of video exhibitor and research sources if appropriate. **All Video/Filmmaking exhibitors must include a printed copy of materials which will remain on display.**

### **Commercial or Promotional Video (SF 50324)**

Prepare a short video (30 seconds to 1 minute in length) that promotes an event, advertises a specific project/product, or is a public service announcement. The video should demonstrate skills in making and editing video.

### **Animated Video (SF 50325)**

Video in this class should represent creative animation of original artwork created by the exhibitor and may include stop motion techniques. Media might include images created with graphics software or hand-drawn images.

### **Documentary (SF 50326)**

Video in this class should represent a research-based investigation into a topic of choice. Video credits should list research sources and may include paper or electronically published materials, as well as interviews with experts or constituents related to the topic of investigation.

### **Short Story or Short Narrative (SF 50327)**

Prepare a short video that tells a story. The video should demonstrate skills in making and editing video.

### **Video/Filmmaking Innovation Class (SF 50328)**

#### **Open to youth enrolled in Video/Filmmaking**

Demonstrate the skills and knowledge you have gained through the Video project. **Your exhibit should not fit in the other exhibit options for this project.** The exhibit may include, but isn't limited to, original works, objects, demonstrations, digital presentations, programs, websites, games, apps, performances, or posters which you have made. Choose whatever method best shows what you've learned. You must furnish any equipment you need for your exhibit. Internet service will not be provided for the exhibit. All exhibits must include something visual, such as a printed copy of a digital presentation, which will remain on display during the exhibition. Electronic equipment will only be used during your personal judging time and will not remain on display during the entire exhibit period.



## VISUAL ARTS

Each county may submit **ONE** entry from each of these projects:

- Chalk/Carbon/Pigment on wood, metal or textiles (Division B) 50352
- Clay 50337
- Computer-Generated Art 50338
- Fiber 50339
- Fiber Non-Original Ages 8-10 Only 50350
- Heritage Arts 50341
- Leather 50321
- Metal 50342
- Nature 50343
- Paper 50344A
- Paper 50344B
- Quilting - You Can Quilt 50331A
- Quilting - Quilting the Best Better 50331B
- Three-Dimensional Design/Mixed Media 50348
- Wood 50349

Each county may submit **TWO** entries from:

- Chalk/Carbon/Pigment on canvas, paper or glass (Division A) 50336
- Food/Cake Decorating (2 total from 50332, 50333, 50334, 50335)
- Glass/Plastic (2 total from 50340A, 50340B, 50340C)
- Scrapbooking (2 total from 50345, 50346, 50347)

Exhibitors must be enrolled in the Visual Arts project category in which they are exhibiting. Exhibitors are encouraged to date the project when it is made. Exhibitors must be able to carry or cart their exhibits across the fairgrounds from the parking lots. All visual arts exhibits are evaluated using a visual arts rubric which takes into account correct use of design elements; craftsmanship; and creativity.

Articles exhibited must be an original design created by the exhibitor (except in Heritage Arts, which may follow a pattern, AND Fiber-Non Original Ages 8-10 ONLY). Copyrighted or trademarked designs are not acceptable; this includes team, school logos and/or characters from movies such as Mickey Mouse, Iron Man, etc. Kits and preformed molds are not considered original and are not acceptable in any Visual Arts Class. Combining parts of different patterns (pictures, photographs, images from the internet or a magazine) with the member's own ideas can result in an original design, but simply changing the color, pattern and/or size of a pattern does NOT make the design original. This also applies for ideas found on a site such as Pinterest. If you see something on Pinterest that you like, use the concept and create something different using the concept; however, it **MUST NOT BE AN EXACT REPLICA OF** something the judge can search for and find on Pinterest. The exhibit may combine parts of different patterns and/or ideas with the concepts of the member, however changing the color or changing the size of the item or pattern used does NOT make it original. If you create an exact replica of what you see somewhere else, it is not your original design. If a photo, sketch, or other idea source was used, submit it with your entry, firmly attached to your exhibit. Be prepared to explain how and where you got the idea for this project.

Copyrighted or trademarked designs are not acceptable; this includes team logos, school logos, and/or characters from movies such as Mickey Mouse, Iron Man, etc. Kits and packaged plastic block sets are not considered original and not acceptable in any Visual Arts Class.

**Use of the 4-H Clover:** Chartered 4-H clubs and enrolled 4-H members are authorized to use the 4-H Name and Emblem. This includes permission for an enrolled 4-H member to use the 4-H name and emblem in exhibits created for personal use and as part of 4-H sponsored events. This includes 4-H decorated cookies, a 4-H clover printed for use in a scrapbook or included as part of any other 4-H exhibit. Use of the green clover shaped image is not protected. The 4-H "emblem" is distinguished by the four H's that signify Head, Heart, Hands and Health. **No creative rendering, changes in color or shape of the official 4-H emblem is allowed.**

NOTE - Any use of the 4-H name and emblem on items intended as **gifts or for sale locally** requires prior permission from your local Extension office. Your Extension office will be able to provide you with the form which must be signed by the Extension County Director. Any uses of the 4-H name and emblem for sale or promotion **online, and/or in statewide events** should be signed by the Illinois 4-H Program Leader ([Illinois4H@illinois.edu](mailto:Illinois4H@illinois.edu)).

Quilts entered in Visual Arts should **ONLY** be entered in the Quilting Project area in either Level 1 *You Can Quilt* (SF 50331A) OR Level 2 *Quilting the Best Better* (SF 50331B). All work on the quilt **MUST** be completed by the 4-H member. You cannot exhibit a quilt that was quilted by someone else.

**Read Visual Arts exhibit guidelines thoroughly. Some exhibit categories have size restrictions!**

**Visual Arts Food Decorating Beginning (SF 50332)**

**Exhibit one of the following:**

- Exhibit four decorated cookies, using a minimum of four different Level 1 techniques. Exhibit may use cookies OR cookie forms.
- Exhibit four decorated cupcakes, using a minimum of four different Level 1 techniques. Exhibit may use cupcakes OR cupcake forms.
- Exhibit a single layer decorated cake, using a minimum of four different Level 1 techniques. Exhibit may use cake OR cake form.

**Visual Arts Food Decorating Intermediate (SF 50333)**

**Exhibit one of the following:**

- Exhibit four decorated cookies, using a minimum of five Level 2 techniques. Exhibit may use cookies OR cookie forms
- Exhibit four decorated cupcakes, using a minimum of five Level 2 techniques. Exhibit may use cupcakes OR cupcake forms.
- Exhibit a single layer or two-layer cakes, using a minimum of five Level 2 techniques. Exhibit may use cake OR cake forms.

**Visual Arts Food Decorating Advanced (SF 50334)**

- Exhibit a decorated, stacked or multi-layer cake; or a tiered cake, using a minimum of four Level 3 techniques. Exhibit may use cake OR cake forms.

**Visual Arts Food Decorating Master (SF 50335)**

- Exhibit an original design decorated cake using more than five techniques. Exhibit may use cake OR cake forms. In addition, include a one-page written description of your project, including goals, plans, accomplishments, and evaluation of results. Up to four pictures of your accomplishments may be included in the description.

**Visual Arts Chalk/Carbon/Pigment: Division A & B**

Enter the division based on the type of material on which the art was created.

**Chalk/Carbon/Pigment: Division A: Canvas, Paper, Glass (SF 50336)**

Any original artwork created with pencils, chalk, pens, ink, paint, charcoal, dyes, etc. on canvas, paper, or glass. This would include all painting, sketching, drawing, cartooning, original non-computer-generated graphics, printing, etc. Painted and/or glazed pre-formed ceramics and painted porcelain dolls are not eligible for the State Fair exhibit. Drawings and paintings should be matted or framed under glass. (Exceptions: Oil and acrylic paintings do not require glass and are not required to be matted.) Watercolor, chalk, pen & ink, computer-generated art, etc. do require some protective covering. Gallery frames are acceptable. Canvas paintings that continue "over the edges" are acceptable without frames; however, the piece must still be prepared for hanging. Matted pieces without frames are acceptable, however the piece must be prepared for hanging OR it must include a photo of the artwork being displayed in a non-hanging manner. There is no specific requirement for the type of mat used.

**Chalk/Carbon/Pigment: Division B: Wood, Metal, Textiles (SF 50352)**

Any original artwork done with pencils, chalk, pens, ink, paint, charcoal, dyes, etc., on wood, metal, or textiles. Painted and/or glazed pre-formed ceramics and painted porcelain dolls are not eligible for State Fair exhibit. Any exhibits created as a piece of wall art must be prepared for hanging.

**Visual Arts Clay (SF 50337)**

Any original item made of clay; may be fired or unfired, hand formed or thrown on a wheel. Self-hardening clays are fine. Fire/oven-cured and cornstarch clay could be accepted. Items can include, but are not limited to, clay statues, bowls, jewelry, etc. Pre-formed ceramics are not eligible for State Fair exhibit.

**Visual Arts Computer-Generated Art (SF 50338)**

Any original art created in any software package. Exhibit may not include scanned work, clip art, downloaded images from the internet, any imported image, or photographs. All pixels must be original. Photo mosaics are NOT allowed. Exhibitors in this class (like all other classes in this sub-section) must be enrolled in Visual Arts; Computer project enrollment is not required. NOTE: Wood and metal exhibits created through the use of laser cutting programs/devices should be entered in this class. Plastic exhibits with an artistic focus created using a 3-D printer should be entered in this class. If the art created is designed to hang, then the entry should have some protective covering, such as a glass frame, and prepared for hanging. If the art is something that has been created with a laser cutting program/device and is NOT designed to hang, it does not require protective covering nor does it need to be prepared to hang.

**Visual Arts Fiber (SF 50339)**

Any original item made of fiber. Examples include but are not limited to fabric collage, soft sculpture, stitchery, weaving, embroidery, cross-stitch, wearable art, hooking, braiding, duct tape artistry, string art, and baskets. **Original** cross-stitched, knitted, or crocheted items belong in this Fiber class. **Non-original** cross-stitched, knitted, or crocheted items should be entered in Heritage Arts. Machine knitted items are not appropriate for this class.

**Visual Arts Fiber Non-Original AGES 8-10 ONLY (SF 50350)**

Any non-original item made of fiber. Examples include but are not limited to fabric collage, soft sculpture, stitchery, weaving, embroidery, cross-stitch, crocheting, knitting, weaving, hooking, and felting. Exhibitors may use a pattern and/or an idea generated from another source.

### **Visual Arts Glass & Plastic (SF 50340A, 50340B, 50340C)**

Any original item made of glass or plastic.

- **50340A - Glass** - Possible items to exhibit include stained glass, etched glass (original design), mosaics made of glass, glass beading.
- **50340B - Plastic** - Possible items to exhibit include plastic jewelry (friendly plastic); recycled plastic art; plastic that can be molded into 3D shapes.
- **50340C - Plastic Block Art** - Any original item made entirely of plastic building blocks. This must be an **original design created by the exhibitor**. Structures are NOT eligible in the Visual Arts Plastic Block Art exhibit area. The exhibit will be judged using a Visual Arts rubric. The exhibit must be attached to a board or frame for display and prepared to be hung or presented as 3-dimensional piece of table art, however NOT a structure (unacceptable items would include buildings, rollercoasters, etc.).

Interlocking building block creations (i.e. LEGOS) are ONLY suitable for 50340C exhibit option of the Visual Arts Glass & Plastic class. Steppingstones can be entered as a Visual Arts exhibit in Glass & Plastic; however they must have an intentional design created using glass and/or plastic and the exhibitor must be prepared to discuss the design elements associated with their exhibit. Due to space limitations, any single exhibit in the Glass & Plastic project should NOT exceed 48" x 48".

**Visual Arts Heritage Arts (SF 50341)** Exhibit an item of *traditional* art learned from another person or **from a pattern** (NO KITS may be entered in this class). Non-original cross-stitched, knitted and crocheted items by pattern fit in this class. ALL ORIGINAL cross-stitched, knitted and crocheted items should be exhibited in Fiber Arts; (machine knitted items ARE NOT acceptable for this class.) Other possibilities include: needle-point, counted cross-stitch, crewel, embroidery, cut work, hardanger embroidery (embroidery openwork), macramé, candles, blacksmithing, pysanki (decorated eggs), baskets (made using a traditional pattern), traditional handmade dolls with handmade costumes, soaps made using nature dyes and/or candles.

**Exhibitors in Heritage Arts MUST also bring** 1) the pattern or a copy of the pattern they used to create their traditional art; and 2) be prepared to explain the traditional origins of their art choice.

### **Visual Arts Leather (SF 50321)**

Exhibit one of the following options using leather:

- **Leather Stamping:** Exhibit should utilize one or more stamping techniques - exhibit examples include items such as belt; coasters; bookmark; key chain; wrist bracelet.
- **Leather Carving or Tooling:** Exhibit should use simple swivel knife tooling techniques or may incorporate several swivel knife-tooling designs or patterns - exhibit examples include items such as belt; pictorial carving; key case.
- **Leather Lacing:** Exhibit to include stamping and/or carving techniques incorporated with lacing techniques - exhibit examples include items such as wallets; purses; etc.
- **Leather Stitching:** Exhibit may include stamping, carving and/or lacing techniques and should be a leather item or article of apparel, which incorporates hand-sewing and/or machine stitching techniques. Hand-sewing and/or machine stitching must be the work of the exhibitor.

### **Visual Arts Metal (SF 50342)**

Any original item made of metal such as sculpture, tin punch, engraved metal, and jewelry. Items intended for industrial use (such as tools and/or shop items) are not considered part of this Visual Arts project and are not eligible for entry. Metal items that have been partially or totally created through the use of laser cutting programs/devices should be entered in Computer-Generated Art.

### **Visual Arts Nature (SF 50343)**

Any original item made of natural material such as wreaths, cornhusk dolls, etc. Items should be made of natural materials (which may be purchased) but securing elements such as glue and wire may be used in the inner construction as long as they do not detract from the overall "natural" appearance. Articles such as dried pressed flowers may be displayed under glass if viewed as necessary for protection/preservation of the natural materials. Candles are not suitable as entries and instead should be entered in Heritage Arts. All baskets should be entered in Heritage Arts.

### **Visual Arts Paper (SF 50344A & SF 50344B)**

Any original item made of paper. Exhibitors should create an exhibit that aligns with one of the following categories:

- **50344A** Two-Dimensional Paper Art - Exhibits should be a 2-dimensional image. Paper art which falls into the 2-dimensional category include includes: Greeting Cards; paper-cut designs; hand-made paper; paper collage; quilling.
- **50344B** Three-Dimensional Paper Art - Exhibits should be a 3-dimensional image. Exhibits in the 3-dimensional category must have multiple layers and/or levels. This is defined as more than 3 layers so the image truly has dimensions that can be viewed from at least three sides; or is at least  $\frac{1}{2}$ " tall. Paper art which falls into the 3-dimensional category includes but is not limited to: Origami; Paper Mache; Paper models of architecture, paper-cut designs; quilling.

### **PLEASE NOTE THE FOLLOWING:**

1. Paper-cut designs and quilling have the potential, depending on the design to align with either of the categories. The key design element is whether the design is 2-dimensional or 3-dimensional.
2. Paper twist articles made from a kit or directions in a craft book or store ARE NOT original and not appropriate in the Visual Arts Paper exhibit area. Scrapbooks are also not eligible in for Visual Arts Paper and should be exhibited in Visual Arts Scrapbooking.

### **Visual Arts Quilting - You Can Quilt (Level 1) (SF 50331A)**

Exhibit one of the following quilting options. All exhibits should include a card which 1) Identifies the item as an original design created by the exhibitor; as a pattern created by someone else; OR as a pattern that has been adapted by the exhibitor. AND 2) Identifies the type of batting used. The item may be quilted using any method - tie, hand, or machine quilted. **All work must be completed by the 4-H member.** Exhibit one of the following:

- A Doll Quilt (maximum size of 24" x 30"); OR
- A Baby Quilt (maximum size of 48"x48"); OR
- A Quilted Table Runner (maximum size of 18" x 36"); OR
- A small Wall Hanging (square or rectangular (maximum size of 36" x 36"). Hanging should include tabs or a pocket on the back for it to be hung.

### **Visual Arts Quilting - Quilting the Best Better (Level 2) (SF 50331B)**

Exhibit one of the following quilting options. All exhibits should include a card which 1) Identifies the item as an original design created by the exhibitor as a pattern created by someone else; OR as a pattern that has been adapted by the exhibitor; 2) Identifies the type of batting used; AND 3) Provides details on any special techniques that were used (applique, embroidery, free-motion quilting, etc.). The item may be quilted using any method - tie, hand, or machine quilted. **All work must be completed by the 4-H member.** Exhibit one of the following:

- A Lap Quilt (width ranging from 42" - 58" length ranging from 56" - 70"); OR
- A Large Quilted Wall Hanging (can be rectangular or square, sized larger than 36" x 36"). Hanging should include tabs or a pocket on the back in order for it to be hung; OR
- A Quilt that fits any size bed (Twin, Double, Queen or King).

**Any quilted projects may be eligible to compete for a \$25 cash award sponsored by the English Prairie Quilter's Guild of Albion.**

**Qualifications for the award: 1. Workmanship must be of good quality. 2. Preference will be given to hand piecing and hand quilting over machine work.**

### **Visual Arts Scrapbooking, Beginning (SF 50345)**

Exhibit one album or notebook, either 8 ½" x 11" or 12" x 12", with a front and back cover. The album/notebook must have a minimum of 4 pages (front and back, making it 8 sides), exhibited in page protectors. **NOTE - the front and back album covers are NOT part of the "page" count.** "Embellishments" are defined as the decorations or special details and features that add to a page and make it more visually appealing. Embellishments may include, but are not limited to, ribbon, clips, stickers, special lettering, etc. Beginners must use a **minimum of four embellishments** in their 4 scrapbook pages (a minimum of four embellishments on the 4 required scrapbook pages, not four per page), 8 sides and tell a story with pictures

### **Visual Arts Scrapbooking, Intermediate (SF 50346)**

Exhibit one album or notebook, either 8 ½" x 11" or 12" x 12", with a front and back cover. The album/notebook must have a minimum of 6 pages (front and back, 12 sides), exhibited in page protectors. **NOTE - the front and back album covers are NOT part of the "page" count.** "Embellishments" are defined as the decorations or special details and features that add to a page and make it more visually appealing. Embellishments may include, but are not limited to, ribbon, clips, stickers, special lettering, etc. Intermediate level exhibitors must use a **minimum of eight embellishments** in their 6 scrapbook pages (a minimum of eight embellishments on the 6 required scrapbook pages, not eight per page), 12 sides and tell a story with pictures and journaling.

### **Visual Arts Scrapbooking, Advanced (SF 50347)**

Exhibit one album or notebook, either 8 ½" x 11" or 12" x 12", with a front and back cover. The album/notebook must have a minimum of 8 pages (front and back, 16 sides), exhibited in page protectors. **NOTE - the front and back album covers are NOT part of the "page" count.** "Embellishments" are defined as the decorations or special details and features that add to a page and make it more visually appealing. Embellishments may include, but are not limited to, ribbon, clips, stickers, special lettering, etc. Advanced level exhibitors must use a **minimum of 12 embellishments** in their 8 scrapbook pages (a minimum of twelve embellishments on the 8 required scrapbook pages, not twelve per page), 16 sides and tell a compelling story with pictures, journaling, and other media.

### **Visual Arts Three-Dimensional Design/Mixed Media (SF 50348)**

Art pieces in this class must be comprised of **at least three different media**. No one medium can make up more than 40% of a piece. The piece should be **either freestanding or should be prepared to be hung**. It must be observable on at least three different sides. Originality and design are important concepts. Craft and preformed or assembled projects are not acceptable. Due to space limitations, any single exhibit in the Three-Dimensional Design/Mixed Media project should NOT exceed 48" x 48".

### **Visual Arts Wood (SF 50349)**

Any original item made of wood (wood carving, sculpture, collage, wood burning, etc.). Utilitarian wood items made from patterns or kits (outdoor or indoor furniture, shelves, etc.) should be entered in woodworking, **NOT** Visual Arts. Popsicle stick crafts are not acceptable for State Fair entry. Wood items that have been partially or totally created through the use of laser cutting programs/devices should be entered in Computer-Generated Art. All Visual Arts Wood exhibits **MUST** have an artistic element that the exhibitor can explain. Furniture built by the exhibitor aligns with the Woodworking project area - unless the element to be judged is wood carving or wood burning that is one element of the exhibit. Exhibits will be judged using a Visual Arts Rubric and not a woodworking construction rubric.

## **WEATHER**

### **Weather and Climate Science 1 (SF 50392)**

Exhibit any product or display illustrating an activity from the book. The exhibit may include, but isn't limited to, original works, objects, demonstrations, digital presentations, programs, websites, games, apps, performances, or posters which you have made. Choose whatever method best shows what you've learned. You must furnish any equipment you need for your exhibit. Internet service will not be provided for the exhibit. All exhibits must include something visual, such as a printed copy of a digital presentation, which will remain on display during the exhibition. Electronic equipment will only be used during your personal judging time and will not remain on display during the entire exhibit period.

### **Weather and Climate Science 2 (SF 50393)**

Exhibit any product or display illustrating an activity from the book. The exhibit may include, but isn't limited to, original works, objects, demonstrations, digital presentations, programs, websites, games, apps, performances, or posters which you have made. Choose whatever method best shows what you've learned. You must furnish any equipment you need for your exhibit. Internet service will not be provided for the exhibit. All exhibits must include something visual, such as a printed copy of a digital presentation, which will remain on display during the exhibition. Electronic equipment will only be used during your personal judging time and will not remain on display during the entire exhibit period.

### **Weather and Climate Science 3 (SF 50394)**

Exhibit any product or display illustrating an activity from the book. The exhibit may include, but isn't limited to, original works, objects, demonstrations, digital presentations, programs, websites, games, apps, performances, or posters which you have made. Choose whatever method best shows what you've learned. You must furnish any equipment you need for your exhibit. Internet service will not be provided for the exhibit. All exhibits must include something visual, such as a printed copy of a digital presentation, which will remain on display during the exhibition. Electronic equipment will only be used during your personal judging time and will not remain on display during the entire exhibit period.

## **WELDING**

### **Welding (SF 50353)**

This exhibit class is open to members who are in the 7<sup>th</sup> grade and higher or at least 12 years 4-H age. Exhibit one arc weldment/item demonstrating the skill level of the exhibitor. Members new to the project should consider selecting a weldment from the suggested Weldment List found on page 43 of *Arcs and Sparks* (4-H 573 - Shielded Metal Arc Welding). **This class is for industrial welding only.** (Members that wish to use welding to create objects with an artistic appeal should consider enrolling in the 4-H Visual Arts project and consider entering those types of exhibits in the Visual Arts - Metal class.) Exhibits must be portable and cannot be exhibited on a trailer.

## **WOODWORKING**

Units 1, 2, and 3 in Woodworking have very specific restrictions on the tools used in building an item to display. This is done for reasons of safety and to provide a fair comparison among projects in a level. **Articles made with tools other than those listed in a level will not be eligible for class awards in that level.**

### **Woodworking 1 (SF 50357)**

Any item made of wood constructed or refinished by the member, appropriate for their age, skills and ability in this project. Pre-cut kits assembled by the member are not acceptable. Exhibits must be portable and cannot be exhibited on a trailer. **Allowed tools in this level:** hand tools only, including a hand miter box

### **Woodworking 2 (SF 50358)**

Any item made of wood constructed or refinished by the member, appropriate for their age, skills and ability in this project. Pre-cut kits assembled by the member are not acceptable. Exhibits must be portable and cannot be exhibited on a trailer. **Allowed tools in this level:** hand tools, power hand drill, miter box (non-powered), oscillating (pad) sander and jigsaw.

### **Woodworking 3 (SF 50359)**

Any item made of wood constructed or refinished by the member, appropriate for their age, skills and ability in this project. Pre-cut kits assembled by the member are not acceptable. Exhibits must be portable and cannot be exhibited on a trailer. **Allowed tools in this level:** hand tools, power hand drill, miter box, jigsaw, scroll saw, power sanders, table saw, drill press, band saw, rabbit plane, jointer, and router.

### **Woodworking 4 (SF 50360)**

Any item made of wood constructed or refinished by the member, appropriate for their age, skills and ability in this project. Pre-cut kits assembled by the member are not acceptable. Exhibits must be portable and cannot be exhibited on a trailer. **Allowed tools in this level:** all those mentioned in levels 1- 3, plus circular saw, radial arm saw, planer, wood lathe, chop saw, and other power tools needed to complete advanced projects.

**EDWARDS COUNTY FAIR**  
**July 24-August 3, 2024**

**GENERAL RULES:**

1. In order to qualify for the livestock auction, a 4-H member, after selling a particular market animal one year, must carry a breeding project of the same species any subsequent year.
2. Sheep will weigh in on Monday followed by Goats, Barrows and Beef in that order. Weigh - IN will begin at 6:00 a.m.
3. All entries must be made Monday between 6-7:30 a.m. or within 15 minutes after last animal is weighed if weigh-in lasts longer than 10 a.m. This applies to all livestock projects in this section of the rules and show book.
4. Animals must be clean and cared for to receive a blue ribbon.
5. Animals that cannot be lead into ring will not receive premium money.
6. All projects exhibited must receive a blue ribbon before being eligible to receive a trophy, including livestock.
7. Records must be up to date and must be checked by committee representative before animals are shown.
8. Regarding health testing of animals prior to show: 4-H members must be present and available to assist the veterinarian when he comes to test the animals for show. If it is absolutely impossible for members to be present, another person must be there to assist.
9. Registration Certificate must be available upon request or examination.

Animals must be confined in some manner when veterinarian comes. If above is not followed, it will be the responsibility of the member to see that the animal(s) are tested at another time prior to show.



## REQUIRED FOR 2024

### 4-H YOUTH FOR THE QUALITY CARE OF ANIMALS

All 4-H Exhibitors of these animals (dairy cattle, beef cattle, swine, sheep, and goats) will be required to certify in the YQCA program each year for the current show season. Attend either a face to face class or certify on-line via the website [yqcaprogram.org](http://yqcaprogram.org). The YQCA program is for youth ages 8-21. This certification is needed each year. The cost for the face-to-face training will be \$3 and \$12 for the online version. Deadline to complete: One month prior to the 2024 county livestock shows. Anyone who has not completed this by one month prior to county livestock shows will not be eligible to exhibit at the county 4-H fair.

### 4-H QUALITY ASSURANCE AND ETHICS CERTIFICATION

It is now mandatory that any member who plans to show at the County level and/or State level must complete the QAEC certification in one species. All State Fair and County horse/pony, poultry, rabbit, cat & dog are required to certify. Web Site URL=<http://web.extension.illinois.edu/qaec/> This certification must only be done once in your show career and you are only required to do it for one species. After completing the certification print off the "certification of completion" for your records. Your 4-H county or local Extension office will be sent a confirmation that you have completed the certification. Deadline to complete: June 1, 2024. Anyone who has not completed by June 1st will be removed from the livestock project area and will not be eligible to exhibit at the county 4-H fair or the Illinois State Fair Junior show.



**Illinois Department of Agriculture Bureau  
of Animal Health and Welfare State Fair-  
grounds P.O. Box 19281 Springfield, IL  
62794-9281  
Phone (217) 782-4944**

**2024 Exhibition Livestock Health Requirements**

**County/State Fairs**

**GENERAL REQUIREMENTS**

**These Exhibition Health Requirements apply to all livestock present at the fair including those animals that are not entered in competitive events.**

1. Exhibitors are required to familiarize themselves with all rules applicable to their exhibits  
All out-of-state animals shall require an entry permit. Entry permit numbers are available online at <https://entrypermit.agr.illinois.gov/Login.aspx>.
2. All animals, except as noted, shall be accompanied by a Certificate of Veterinary Inspection (CVI) which shows that the animal meets all health requirements for the State of Illinois. CVI's shall be made available to Bureau of Animal Health Personnel on request. If an official electronic CVI is utilized, the exhibitor should be able to log on and show Bureau of Animal Health Personnel the completed CVI.

CVI means a legible record made on an official form from the state of origin which has been issued, signed and dated by an accredited veterinarian and which shows the name and address of the animal's owner or exhibitor and the results of all required tests or vaccinations. A CVI shall list only one animal identification per line; shall be presented on the form on which it was initially issued; and shall not be corrected, changed or altered in any manner.

3. All animals shall be officially identified. The animal(s) official identification shall be recorded on the CVI.  
  
Animal identification number (AIN): A numbering system for the official identification of individual animals in the United States that provides a nationally unique identification number for each animal. The AIN consists of 15 digits, with the first 3 being the country code (840 for the United States or a unique country code for any U.S. territory that has such a code and elects to use it in place of the 840 code).
4. If animals are from tuberculosis accredited, brucellosis certified, pseudorabies qualified, or brucellosis validated herds, the identifying herd number(s) along with the date of the last herd test(s) shall appear on the CVI.
5. CVI for out-of-state livestock shall be void thirty (30) days after issuance.
6. CVI for Illinois-origin livestock shall be void ninety (90) days after issuance.
7. All livestock shall be subject to examination upon entry to any Illinois fair or exhibition. Any animal showing evidence of infectious, contagious or communicable diseases shall be immediately withdrawn and held in quarantine at the owner's risk and expense until properly treated and recovered, or until the animal is released to return to the owner's premise.

Any livestock infected with scabies, mange, active lesions of ringworm, soremouth, or multiple warts which are easily visible without close examination shall not be permitted to exhibit and are subject to quarantine or removal from the fairgrounds.

Sheep and goats with caseous lymphadenitis as evidenced by draining abscesses shall not be exhibited and are subject to immediate quarantine or removal from the fairgrounds.

In the event of the suspicion of or diagnosis of a foreign animal disease, emerging animal disease, or other actionable disease, animals may be subject to quarantine on the fairgrounds until such time that it is determined that the disease is not longer a threat.

8. Illinois Department of Agriculture personnel or designee may collect blood, tissue, milk or urine samples from any animal being exhibited and/or raced at any Illinois fair to test for the presence of illegal drugs or banned substances. Examination techniques, such as ultrasound, may also be used at anytime while the animals are on the grounds of any Illinois fair or exhibit.

The Illinois Department of Agriculture or designee may collect urine, blood, tissue or other test samples from exhibition animals at the time of slaughter.

9. All exhibitors of animals at any Illinois fair or exhibition shall comply with the provisions of the Illinois Humane Care for Animals Act. If violations are observed, the animal(s) will be excused from exhibition and ordered removed from the grounds with all awards being forfeited.

Any practice or deviation from normal, accepted care, including physical, medical or mechanical application, shall constitute a violation of show rules and may result in the animal(s) disqualification and removal from the fairgrounds.

10. Any Illinois cattle, bison, cervidae or goats being exhibited in non-accredited free states must be isolated from the remainder of the herd/flock upon return to Illinois and retested for tuberculosis 60-120 days post-entry.

## CATTLE

### Identification

Individual identification of each animal shall be either a fully healed and legible tattoo, approved official ear tag, registration number (can only be used if the tattoo is recorded on the registration certificate or for breeds where pictures are acceptable), or individual brands, if brand is recorded on the registration certificate.

### Illinois Cattle

#### Brucellosis

Illinois is a Bovine Brucellosis Class-Free State. Brucellosis testing is not required for Illinois cattle.

#### Tuberculosis

Illinois is an Accredited Tuberculosis-Free State. Tuberculin testing is not required for Illinois cattle.

**Please note: Illinois calves under 6 months of age, and Illinois steers are not required to have a Certificate of Veterinary Inspection.**

## SWINE

### Illinois Swine

#### Identification

1. Swine shall be identified by an official ear tag, tattoo or recognized breed ear notch.
2. Ear notch identification is acceptable for all barrows, crossbred gilts and breeding swine.

(Note: Ear notch identification of crossbred swine does not satisfy USDA identification Requirements for interstate movement of official testing.)

#### Brucellosis

Brucellosis testing is not required for Illinois swine.

#### Pseudorabies

Pseudorabies testing is not required for Illinois swine.

## **SHEEP**

### **Identification**

Individual identification of each animal shall be by an ear tattoo or official metal or plastic tag. A microchip ID is acceptable if the owner provides the reader.

Ear tattoos may be used when a registration certificate, listing the tattoo number, accompanies the animal.

When using ear tags, the tag must indicate the premises ID and state of origin. The tag number must be assigned by a state or APHIS representative and recorded in the Scrapie Record Database.

### **Market Lambs**

All market lambs must be slick shorn (show ring ready) before weigh-in so that show lamb fungus can be identified.

### **Illinois Sheep**

1. Sheep originating from a flock that has previously been classified as either an infected or source flock can be exhibited in Illinois upon the completion of an approved flock plan.
2. For any animal born after 1/1/2002, the CVI must include the flock of birth and the flock of origin, if different.

## **GOATS**

### **Identification**

Individual identification of each animal shall be by an ear tattoo or official metal or plastic tag. A microchip ID is acceptable if the owner provides the reader.

Tattoos may be used when a registration certificate, listing the tattoo number, accompanies the animal.

When using ear tags, the tag must indicate the premises ID and state of origin. The tag number must be assigned by a state or APHIS representative and recorded in the Scrapie Record Database.

Ears should be used for tattooing when possible. If there is no space in the ear, the flank or tail fold may be used.

### **Illinois Goats**

1. Goats originating from a herd that has previously been classified as either an infected or source herd can be exhibited in Illinois upon the completion of an approved herd plan.
2. For any animal born after 1/1/2002, the CVI must include the flock of birth and the flock of origin, if different.

# HORSES, PONIES, MULES AND OTHER EQUIDAE

## Illinois Equine

1. All horses and other equidae, twelve (12) months of age and older attending an advertised equine event, shall be accompanied by a negative test for equine infectious anemia (EIA) conducted within the last twelve (12) months. A copy of this test shall accompany the animal.
2. AGID (Coggins) or ELISA tests are accepted
3. An advertised equine event means a show, rodeo, sale, auction, exhibition, trail ride, or horse fair that is posted or media promoted.
4. A CVI is not required for Illinois equine

## POULTRY

1. All entries (except waterfowl, i.e. domesticated fowl that normally swim, such as ducks and geese) in a show or exhibition shall have originated from a U.S. Pullorum-Typhoid Clean or equivalent hatchery or flock OR have a negative pullorum-typhoid test within 90 days prior to exhibition. Exhibitor shall show proper information as to name and address of owner or exhibitor, name and address of the authorized testing agent, date of the testing and the number, breed, and species of those tested.
2. Prior to being used to transport poultry to a show, all crates, boxes, containers and vehicles shall be thoroughly cleaned and disinfected.
3. Any poultry vaccinations must be performed at least 4 weeks prior to delivery to the show.
4. Upon admission to a show, all entries shall be examined by an official fair veterinarian or qualified state personnel who shall also receive and examine all certificates necessary for admission of birds to a show. Birds not in show condition will be excused from exhibition and removed from the premises. Any fowl showing signs of illness during the fair will be removed from the exhibition grounds.
5. All out-of-state turkeys must originate from flocks that are officially classified as U.S. Mycoplasma Gallisepticum Clean in accordance with the provisions of the National Poultry Improvement Plan or be negative to a test for Mycoplasma gallisepticum within 30 days prior to entry.
6. A permit is also required for out-of-state poultry. A permit may be obtained online at <https://entrypermit.agr.illinois.gov/Login.aspx>.

**Please note: These poultry exhibition requirements do not apply to 4-H and FFA 1-day poultry shows where the entries are taken to the show and returned home the same day.**

## PIGEONS

There are no requirements governing the movements of pigeons within or into Illinois

## RABBITS

There are no requirements governing the movements of rabbits within or into Illinois.

**IF ANY CHANGES OR REVISIONS SHOULD OCCUR IN THIS SECTION THEY WILL BE NOTED IN UPCOMING NEWSLETTERS.**

All livestock projects including small animal projects must be registered at Fairgrounds Clean Up on Thursday, July 18, 2024 starting at 6:00-7:30 p.m. Records are due at 7:00 p.m.

## **EQUINE SHOW**

4-H rules prevail. (Horses **MUST** be in possession 60 days prior to show.) Helmets are required and must be worn if mounted on a horse. Shows are at the horse arena at the fairgrounds.

**Friday, July 26, 2024, 6:00 p.m.**

Pony Halter - 54 inches and under

Mare Halter - over 54 inches

Gelding Halter - over 54 inches

Novice will begin with age 8, as of Sept. 1 of current 4-H year. Senior will end with age 18 as of Sept. 1 of current 4-H year. Junior age will be decided day of show.

Senior Showmanship

Junior Showmanship

Novice Showmanship

**Western attire is required for all**

**Long-sleeve shirt**

**Jeans or slacks**

**Cowboy boots**

**Cowboy hat**

Senior Pleasure (walk-trot & canter)

Junior Pleasure (walk-trot & canter)

Novice Pleasure (walk-trot only)

Senior Horsemanship

Junior Horsemanship

Novice Horsemanship

Senior Trail

Junior Trail

Novice Trail

**\*\*\*HELMETS REQUIRED\*\*\***

Senior Egg & Spoon

Junior Egg & Spoon

Novice Egg & Spoon

Barrels

Pole Bending

Catalog Race



**Judges Decision Final.**

## **RABBITS**

Rabbits need to be on site and ready to be judged by 1:30 p.m. Judging will begin promptly at 2:00 p.m. on **Sunday July 28, 2024** in the COUNTRY Financial Hall.

Rabbits should be in a cage with a bottom. 4-H rules prevail. (May bring in the day of show and take home immediately after show). Members are responsible for making sure their area is clean before leaving the show.

**\*\*Reminder\*\* - Market animals can only be shown in the market class, unless in a group.**

**MAKE SURE YOU ARE AWARE OF THE WEIGHT, AGE AND BREED OF YOUR PROJECT!**  
In the past some rabbits have been too old and too heavy for their category.  
Make sure your rabbits, and cages are clean.

Breed Classes—Lop, New Zealand, Californian, Mini Rex; All other pure breeds, small size; All other pure breeds, Large size; Mixed Breeds.

Limit 2 entries per class  
Senior Buck (6 mo. and up)  
Senior Doe (6 mo. and up)  
Junior Buck (under 6 mo.)  
Junior Doe (under 6 mo.)

Champion and Reserve Champion of each class (Best of Breed/Best Opposite)  
Grand Champion and Reserve Grand Champion Over All Breeds

Market Animal classes (6 months and under)  
Fryer (5.5lbs. and under)  
Roaster (5.6lbs. and over)  
Grand Champion and Reserve Grand Champion Market Animal  
Meat Pen Class (3 from litter - uniform in size and weight)

Senior Showmanship  
Junior Showmanship  
Novice Showmanship

Breeding and market animals must be in possession 6 weeks before show.

## **ADDITIONAL SMALL ANIMALS**

Judged **Sunday, July 28, 2024**, at 2:00 p.m. in the COUNTRY Financial Hall.

All other small animals including cats, cavies, guinea pigs, hamsters, etc. Bring your animals the day of show. They may be taken home immediately after show. (Birds and fish show in the General Show.)

Jr. & Sr. Small Pet Champions

Cats need current rabies shot and vaccinations.

**SHEEP** by Breeds - Judged **Monday, July 29, 2024 2:00 p.m.**

Registered Ram Lamb under 1 year  
Registered Ewe (1 year and under 2)  
Registered Ewe Lamb  
Registered Ewe (over 2)

**Non Registered Sheep-**

Ram Lamb under 1 year  
Ewe (1 year and under 2)  
Ewe Lamb  
Ewe (over 2)

Champion male of each breed- (Hampshire, Corriedales, Cheviots, Polled Dorsets, Montadale, Suffolks, All other Breeds, White Face Cross Breeds and Cross Breeds)

Champion female of each breed- see above

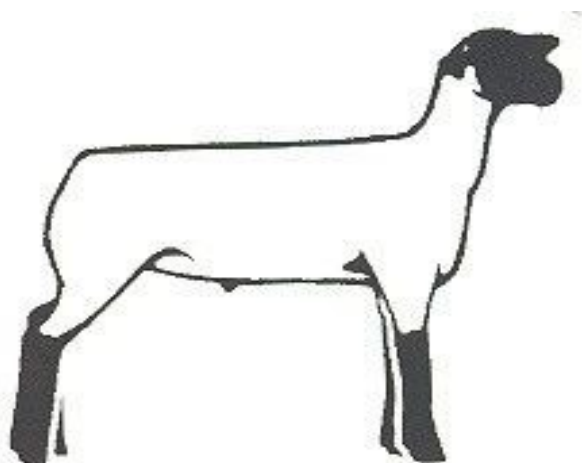
Grand Champion & Reserve

Market Class - Wether lamb born after Jan. 1 of current year, must be shown. Entry is limited to two animals, no matter what the weight. Entry not eligible to be shown in breeding classes. No ewes allowed.

Classes to be determined the day of weigh in.

Grand Champion and Reserve Grand Champion

Senior Showmanship  
Junior Showmanship  
Novice Showmanship





**SWINE - Judged Tuesday, July 30, 2024, 8:00 a.m.**

Purebred Barrows

\*Barrows shown in purebred class not eligible for sale in auction, unless 4-H member does not have another market animal in any species of food animal.

Purebred Barrow Heavyweight (Not shown in Market class)

Purebred Barrow Lightweight (Not shown in Market class)

Crossbred breeding gilt shown by weight (Limited to 2 entries no matter what the weight)

Grand Champion and Reserve Champion Crossbred Gilt

Market Class - Limited to 2 entries no matter what the weight.

Barrows - (classes to be determined day of weigh in)

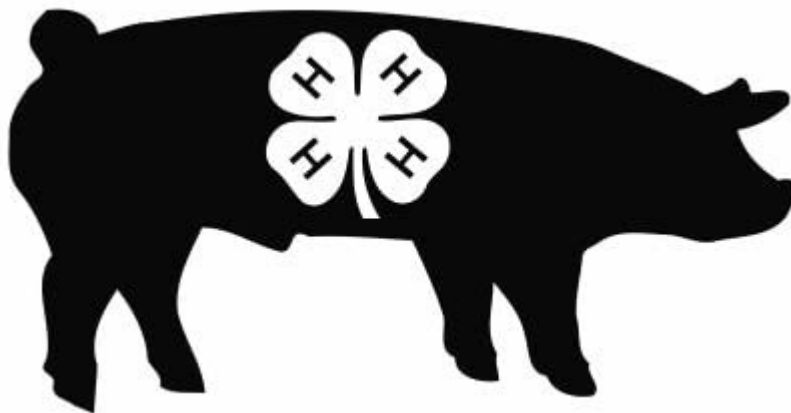
Grand Champion and Reserve Grand Champion Market

Grand Champion and Reserve Grand Champion Barrow

Senior Showmanship class

Junior Showmanship class

Novice Showmanship class



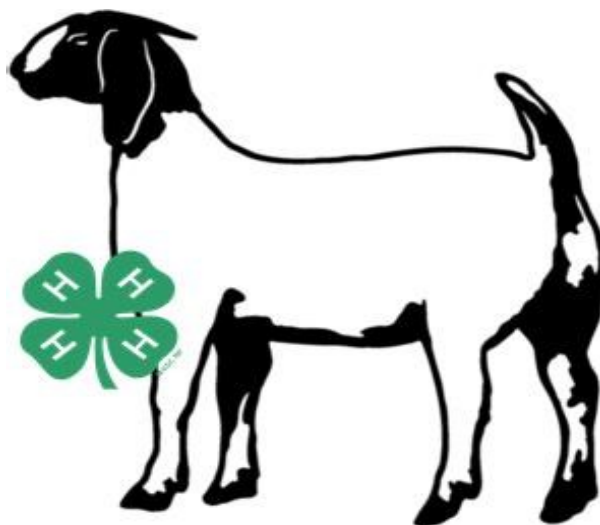
**GOATS - Judged Tuesday afternoon, July 30, 2024, at 1:00 p.m.**

1. Registered dairy
2. Non-Registered dairy
3. Registered meat goat
4. Non-registered percentage and other meat goat breeds

Female under 5 months  
Female over 5 months but under 1 year  
Male under 5 months  
Yearling, dry or freshened  
Doe 2-5 years  
Doe over 5 years  
Champion female of each class  
Grand Champion and Reserve Grand Champion

Limited to two entries, regardless of weight. Classes will be determined at weigh-in  
Market Goat 4-8 months, divided by weight into up to five classes  
Reserve Grand Champion Market Wether  
Grand Champion Market Wether

Senior Showmanship  
Junior Showmanship  
Novice Showmanship



**POULTRY** - Judged **Thursday July 25, 2024 at 5:30 p.m.** at 4-H Arena. 4-H rules prevail. Animals must be removed from the Fairgrounds after the show.

**White Egg Layers**

- One Rooster - hatched before January 1
- One Hen - hatched before January 1
- One Cockerel - hatched January 1 or after
- One Pullet - hatched January 1 or after

**Colored Egg Layers**

- One Rooster - hatched before January 1
- One Hen - hatched before January 1
- One Cockerel - hatched January 1 or after
- One Pullet - hatched January 1 or after

**Fancy Breeds - Bantams, Polish, and Feather-Footed**

- One Rooster - hatched before January 1
- One Hen - hatched before January 1
- One Cockerel - hatched January 1 or after
- One Pullet - hatched January 1 or after

Turkeys

Guineas

Waterfowl

Game Birds - Quail, Pheasants, Chuckars, Pigeons, and Doves

**Young Pen 1 cockerel and 2 pullets**

**Older Pen 1 rooster and 2 hens**

**Barnyard Special - 3 birds, at least 2 species**

**Best of Show and Grand Champion over all breeds**

Markets Classes (any type of fowl under 1 year of age)

Fryer (4lb and under)

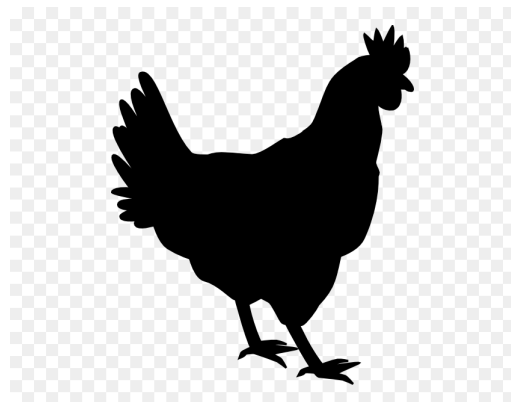
Broiler (Over 4lb)

1 dozen eggs displayed in egg carton

Senior Showmanship

Junior Showmanship

Novice Showmanship



## **Bucket Calf**

**Judged Wednesday, July 31, 2024, 8:00 a.m.**

Bucket Calves will be judged on:

1. Interview
2. Records
3. Calf's health, grooming, and conformation

All bucket calves will be weighed Monday morning after the steers. Members will meet with the project leader on Monday after weigh-in to complete the weight and average daily gain section of their record. Records will be turned in at that time and will be returned at show time. Interviews will be conducted Tuesday, at the member's stall, at a designated time set by Chairperson.

Bucket calves will be shown either as a Beef Bucket Calf or a Dairy Bucket Calf, unless entry numbers are so low that only one Bucket Calf class is offered. Those with a bucket calf will be eligible for an optional bucket calf showmanship class, with one plaque to be awarded. Bucket calves will not be eligible for beef or dairy showmanship classes.

Champion Dairy Bucket Calf  
Reserve Dairy Bucket Calf

Champion Beef Bucket Calf  
Reserve Beef Bucket Calf  
Showmanship

## **DOGS**

**Judged Tuesday, July 23, 2024, 6:00 p.m. at 4-H Arena.**

### **Dog Care :**

Obedience - judged on heel, sit, stay, and health

### **Dog Obedience:**

Beginning Novice I - (inexperienced handlers & inexperienced dog)

Beginning Novice II -(experienced handlers & inexperienced dog or inexperienced handlers & experienced dog)

Preferred Novice

Novice

Graduate Novice

In order to receive a blue ribbon, one will have to have enough points to qualify for State Fair.

All dogs need to have current rabies shot and vaccinations.

**BEEF by Breeds Judged Wednesday, July 31, 2024, 8:30 a.m.**

Registered calf under 6 months  
Registered 6 month—12 month heifer  
Registered 12 month—18 month heifer  
Registered 18 month and up cow

Champion Female and Reserve Champion Female of each breed (Hereford, Angus, Simmental, Shorthorn, All Other Breeds)  
Bull Calf under 6 months not eligible for champion female drive  
Grand Champion and Reserve Grand Champion Overall Registered Female

Crossbred calf under 6 months  
Crossbred calf 6 month—12 months heifer  
Crossbred calf 12 month—18 months heifer  
Crossbred calf 18 month and up cow

Champion and Reserve Champion Crossbred Female  
Bull Calf under 6 months not eligible for champion female drive  
Market Class - Any animal showing as a breeding animal is not eligible for market class. Classes or divisions to begin with light weight showing first.

(Classes to be determined day of weigh in.) Limited to One entry per class to maximum two entries per total.

Grand Champion and Reserve Grand Champion Steer  
**Rate-of-Gain Class has been added**

Senior Showmanship class  
Junior Showmanship class  
Novice Showmanship class



## Edwards County Master Showmanship Contest

The Master Showmanship Contest will be held **Wednesday, July 31, 2024**, at the 4-H Livestock Arena at 6:00 p.m.

### Contest Rules:

- The winners of the senior showmanship division for beef, swine, sheep, and goats will be eligible to participate. If the winner chooses not to participate, the reserve showman for that species will be asked to participate. There will be no 2nd alternates selected.
- Senior Showmanship winners must notify the Extension Office of their intent to participate. Sheep, swine, and goat participants must inform the Extension Office by 4:00 p.m. on Tuesday, July 30, 2024 of their decision to participate in order for the reserve showman to be given the opportunity if the showmanship winner chooses not to participate. Beef showmanship winner needs paperwork completed and returned to Extension office, after the Beef show on Wednesday morning.
- A 4-H member who qualifies for this contest in more than one species must represent the species that they are exhibiting the largest number of entries in, assuming they want to move up to Master Showmanship competition. The reserve of the species not selected will be asked to participate.
- If winner of a species chooses not to participate, then it is left up to the Extension Staff whether to judge that specie.
- Each participant will be responsible for selecting their own animals for the competition. They may use their own 4-H animals, they have shown or use other 4-H members animals. If assistance is needed by an individual in getting a specific specie(s), the Chairperson of each specie will be available for assistance.
- Each participant will be responsible for owning or borrowing show equipment (for example: combs, show sticks, etc.)
- All participants will show sheep first, followed by goats, swine, and beef.
- Participants will be judged on their appearance, showing the animals, and knowledge of species shown.
- Contest organizers withhold the right to expel any individual who has violated any of the rules or regulations, or exhibits improper conduct that is unbecoming to a 4-H member.
- The winner of the Edwards County Master Showmanship Contest will be eligible to compete at the Illinois State Fair Master Showmanship Contest. If the winner chooses not to participate, the Reserve Master Showman may compete at the Illinois State Fair Master Showmanship Contest.
- The Master Showmanship Committee, in consultation with the County Director and Extension staff, reserves the right to make changes or exceptions to these rules and to rule in the event of unforeseen circumstances.

## YOUTH AUCTION

Auction will be Thursday of the fair at 9:00 a.m. If youth members have an option of animals to sell for the auction, they **MUST** let the Extension office know by noon on Wednesday, which animal they plan to sell so the order of sale can be completed!

### RULES:

- 1. EACH 4-H MEMBER MAY SELL ONLY ONE ANIMAL**  
If a member does **NOT** have a (rabbit, poultry, bucket calf, wether, barrow, or steer they exhibited in a market class) they may sell any **FOOD ANIMAL** of choice in sale. If animal is in the non market class, this animal can only go through the auction one year. It will not be eligible in subsequent years. The one exception of an animal selling 2 years in a row is in the bucket calf class then in the market steer market class, the following year. For an animal to be eligible for auction it must have been shown in the 2024 4-H show and all appropriate records kept. All 4-H members selling animals must be there 30 minutes prior to the sale! Make sure Extension Office knows by noon Wednesday which animal, will be sold if member has shown more than one market animal.
2. All market barrows, wethers and lambs must be owned and in possession of the 4-H'er at least 60 days prior to the fair.
3. Small animals sold first followed by sheep, beef, and barrows.
5. Order of sale will be Grand Champion Animal, Reserve Champion Animal, A rating animals, B rating animals and C rating animals, non market food animal.
6. Arrangements will be made to furnish buyer for people who cannot attend the sale.
7. Order of sale will be furnished before first animal sells.
8. The auction will be for premium only. The buyer will not be purchasing the animal and will be paying only the premium that he or she bids to the youth. The premium amount does not include the market value of the animal.
9. The 4-H member retains ownership of the animal and is responsible for seeing that the animal is removed from the premises.
10. Every 4-H'er selling in the auction will be assessed \$5 to help pay for the cost of thanking the buyers such as the ads in papers, pictures, and buyers' cards. The \$5 is to be paid at the time of registration on Monday.
11. Only Ringmen allowed in the arena during the Equine and all other shows.

Livestock Auction is sponsored by Edwards Co. Fair Association Neil Fearn, President 445-3615

# Premiums

The Danish System will be used to award premiums. All exhibits will receive a "Blue (A)", "Red (B)" or "White (C)" rating. Premiums are only paid on State-approved projects. No premium will be paid on county projects. Premiums will be distributed *based upon funds made available* as noted in the following disclaimer. Premiums, if available, will be mailed to your home address.

- The total dollars available for premiums will be awarded by using the "X-Factor".
- The amount may vary according to the rating received and State Funding.
- Premium checks will be mailed to each 4-H member who exhibited.

## 4-H Premiums "X" Factors

X Factor Category:

Blue: 3X

Red: 2X

White: 1X





2023-2024

Evalym Edwards- Yankees 4-H Club

